

TEL : 82-53-668-0286
FAX : 82-53-668-0277
AFS : RKRRYNYX
E-mail : aisd@korea.kr
Web : <https://aim.koca.go.kr>

REPUBLIC OF KOREA
Ministry of Land, Infrastructure and Transport
Office of Civil Aviation
11, Doum 6-ro, Sejong-si, 30103, Republic of Korea

AIRAC
AIP
Supplement 72/24
14 NOV 2024

GEN : NIL

ENR : NIL

A D : MUAN/Muan INTL(RKJB)

RWY 19 THRESHOLD DISPLACED BY 300 m

(Effective : 1600UTC 25 DEC 2024)

1. INTRODUCTION

RWY 19 landing threshold will be displaced by 300 m.

2. PERIOD

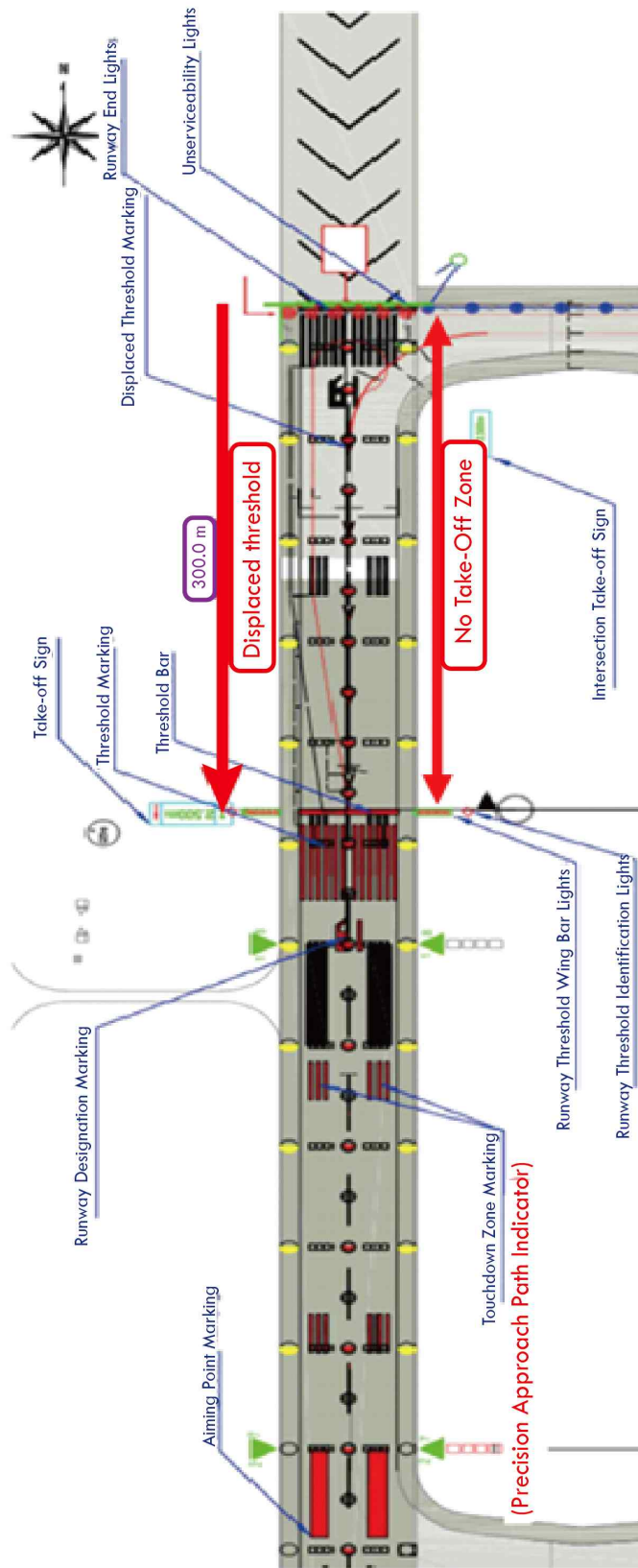
From 1600 UTC 30 OCT 2024 To 1500 UTC 30 APR 2025

3. REMARKS

- (1) Temporary sign for TORA 2 500 m and intersection take-off sign when entering RWY 19 from TWY E1 will be installed.
- (2) To avoid aircraft blast, all departure aircraft for RWY 19 shall start take-off at displaced threshold("T" point).
- (2) Any change to the contents of these pages will be notified by NOTAM.

(AIRAC AIP SUP 59/24 is hereby superseded)

4. DIAGRAM



← 2,500m

Intersection take-off sign when entering RWY 19 from TWY E1

↑ 2,500m

Temporary sign for TORA 2 500 m