

TEL : 82-53-668-0255
FAX : 82-53-668-0277
AFS : RKRRYNYX
E-mail : aais@korea.kr
Web : http://ais.casa.go.kr

REPUBLIC OF KOREA

Ministry of Land, Infrastructure and Transport
Office of Civil Aviation

11, Doum 6-ro, Sejong-si, 30103, Republic of Korea

AIRAC
AIP
Supplement 6/21
11 MAR 2021

GEN : NIL

ENR : NIL

A D : SEOUL/Gimpo INTL(RKSS)

OPERATIONAL RESTRICTIONS

1. INTRODUCTION

Some parts of RWY will be closed due to pavement maintenance.

2. PERIOD

From 1400 UTC 3 MAY 2021 To 2100 UTC 26 MAY 2021

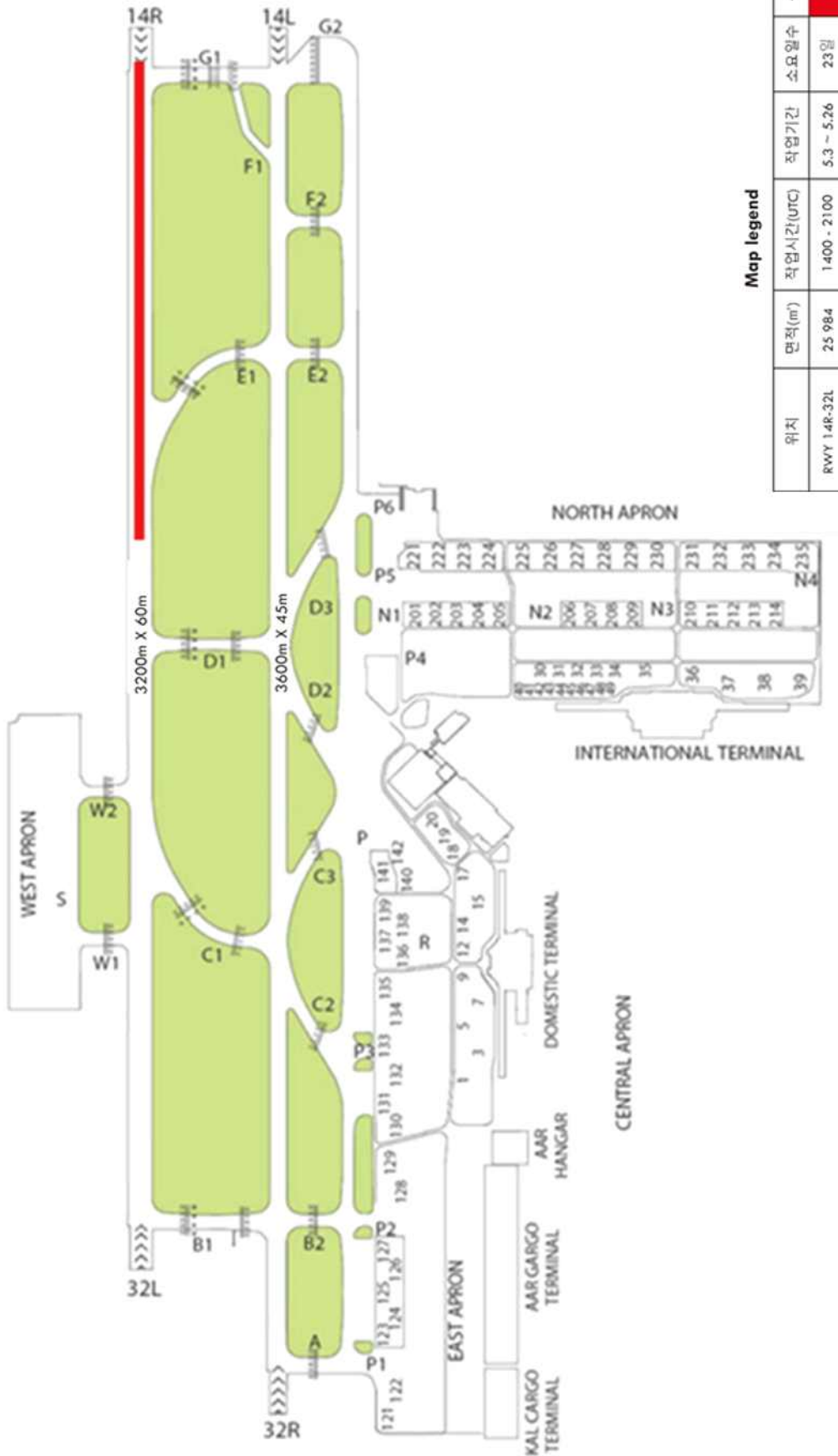
3. CONSTRUCTION AREA

Location & Closed Area	Period	Working Hours (UTC)
RWY 14R/32L	3 MAY 2021 ~ 26 MAY 2021	1400 ~ 2100

4. REMARK

Any change to the contents of these pages will be notified by NOTAM.

5. DIAGRAM



Map legend

위치	면적(m ²)	작업시간(UTC)	작업기간	소요일수	구분
RWY 14R-32L	25 984	1400 - 2100	5.3 ~ 5.26	23일	