

TEL : 82-32-880-0256  
 FAX : 82-32-889-5905  
 AFS : RKRRYNYX  
 E-mail : aisd@molit.go.kr  
 Web : http://ais.casa.go.kr

**REPUBLIC OF KOREA**  
**Ministry of Land, Infrastructure and Transport**  
**Office of Civil Aviation**  
 11, Doum 6-ro, Sejong-si, 30103, Republic of Korea

**AIP**  
**Supplement 20/19**  
**24 OCT 2019**

**GEN : NIL**

**ENR : Enroute**

**A D : NIL**

**TEMPORARY RESTRICTED AREAS ESTABLISHED**

**1. INTRODUCTION**

Temporary restricted areas will be established due to unmanned aerial vehicles demonstration project carried out as follows.

**2. PERIOD**

From 1500 UTC 1 JAN 2020 To 1459 UTC 31 DEC 2020

**3. TEMPORARY RESTRICTED AREAS**

No	Name	Lateral Limits	Vertical Limits		Remarks
1	고흥 (Goheung)	A circle radius 11.1 km (6 NM) centered on 34°36'40"N 127°12'21"E	1 500 ft		1. 고흥(Goheung) Restricted area operating day : From MON to FRI (EXC SAT and SUN)  2. UA22 Ultralight vehicle flight area operating day : SAT and SUN (EXC From MON to FRI)
2	대구 (Daegu)	A circle radius 3.7 km (2 NM) centered on 35°39'47"N 128°22'22"E	1 500 ft		-
3	고성 (Gosung)	A circle radius 1.5 km (0.8 NM) centered on 35°01'22.18"N 128°22'56.90"E	1 500 ft		-
4	부산 (Busan)	A sector of circle radius 5.5 km (3 NM) arc centered on 35°04'36"N 129°05'32"E, starting from 35°05'36.6"N 129°08'41.0"E to 35°01'58.7"N 129°06'48.9"E clockwise	within 0.5 km	1 000 ft	-
			within 0.5 ~ 5.5 km	1 500 ft	

No	Name	Lateral Limits	Vertical Limits	Remarks
5	영월 (Youngweol)	A circle radius 3 NM centered on 37°10'20"N 128°28'07"E	SFC ~ 1 500 ft	-
6	전주 (Jeonju)	A circle radius 1 NM centered on 35°45'34"N 127°05'33"E	SFC ~ 1 000 ft	-
7	보은 (Boeun)	A circle radius 3 km centered on 36°34'15"N 127°48'07"E	SFC ~ 1 000 ft	-
8	화성 (Hwaseong)	37°17'28.68"N 126°45'42.54"E - 37°16'36.66"N 126°44'47.52"E - 37°15'36.48"N 126°44'47.88"E - 37°15'00.48"N 126°45'16.56"E - 37°15'02.94"N 126°47'09.96"E - 37°17'28.68"N 126°47'05.07"E - to the beginning	1 000 ft	1. 화성(Hwaseong) Restricted area operating day : From MON to FRI (EXC SAT and SUN)  2. UA19 Ultralight vehicle flight area operating day : SAT and SUN (EXC From MON to FRI)
9	광양 (Gwangyang)	A circle radius 4 km (2.2 NM) centered on 35°00'09.46"N 127°47'05.88"E	1 500 ft	1. 광양(Gwangyang) Restricted area operating day : From MON to FRI (EXC SAT and SUN)  2. UA25 Ultralight vehicle flight area operating day : SAT and SUN (EXC From MON to FRI)
10	서귀포 (Seogwi po)	A circle radius 1.5 km (0.8 NM) centered on 33°18'17.00"N 126°18'31.00"E	1 000 ft	-

#### 4. REMARKS

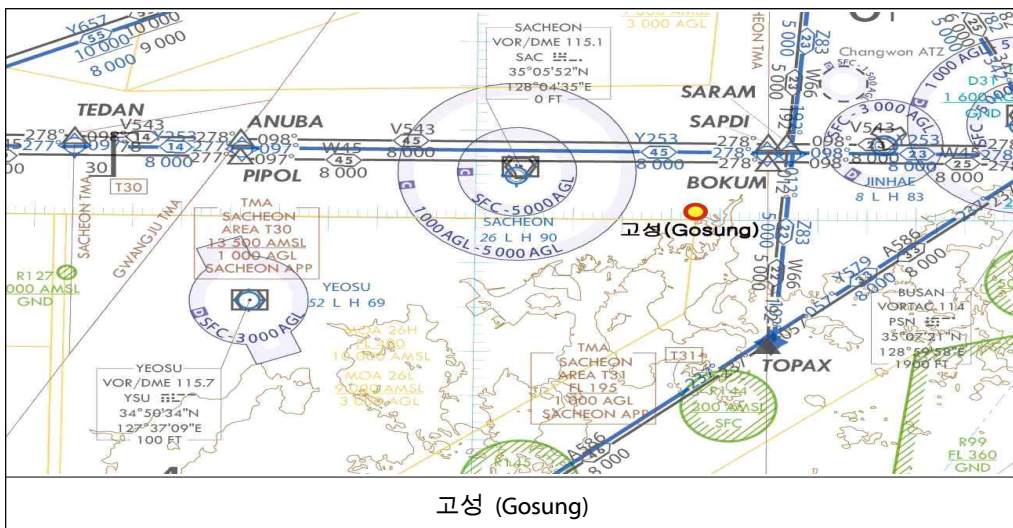
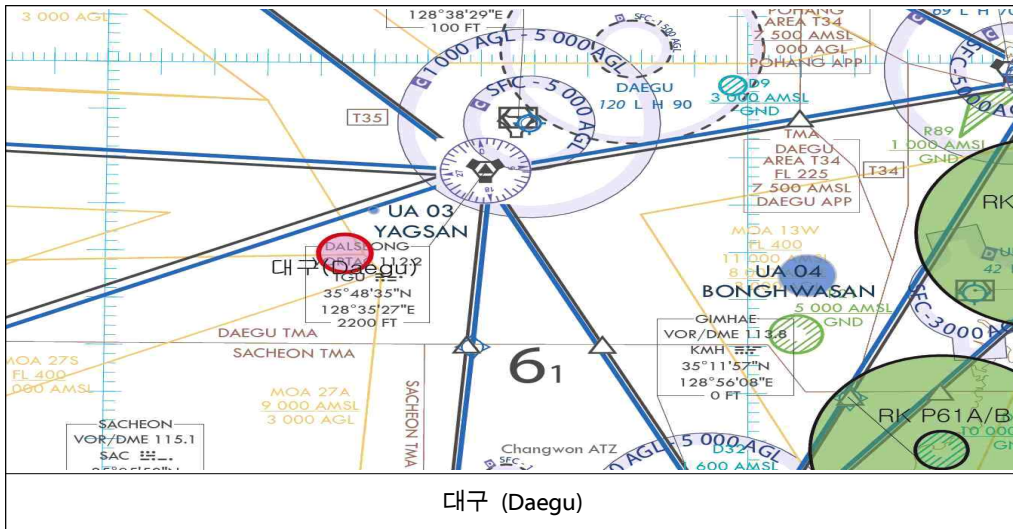
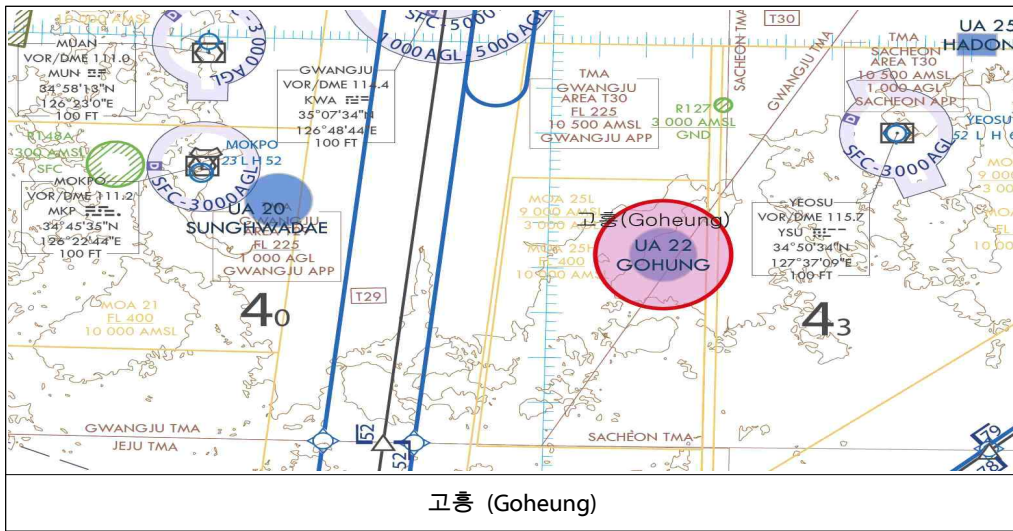
(1) Point of contact

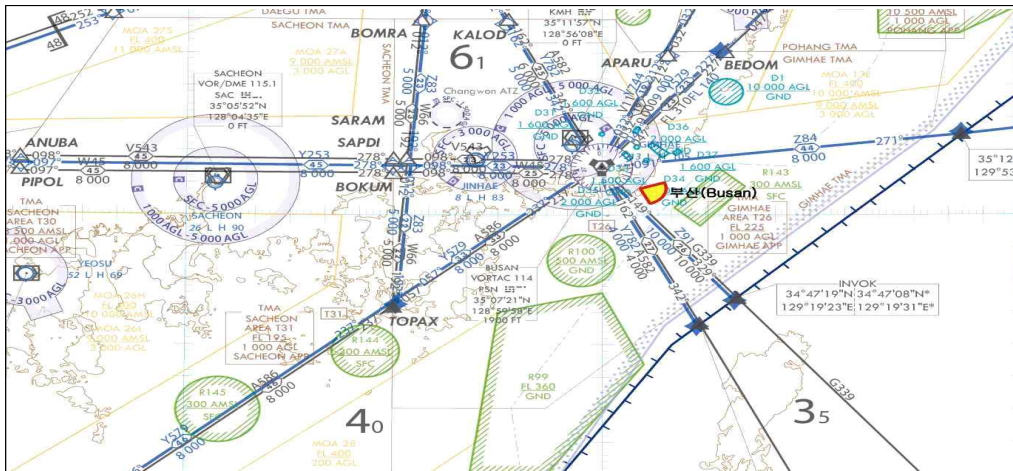
- Project manager : Korea Institute of Aviation Safety Technology, TEL +82-32-727-5755
- Airspace : Air Traffic Management Office, TEL +82-53-668-0252, 0253
- FLT APV : Seoul/Busan/Jeju Regional Office of Aviation,  
TEL +82-32-740-2152, 2153(Seoul), +82-51-974-2152(Busan), +82-64-797-1741(Jeju)

(2) The temporary flight restricted areas are shown in the below diagram.

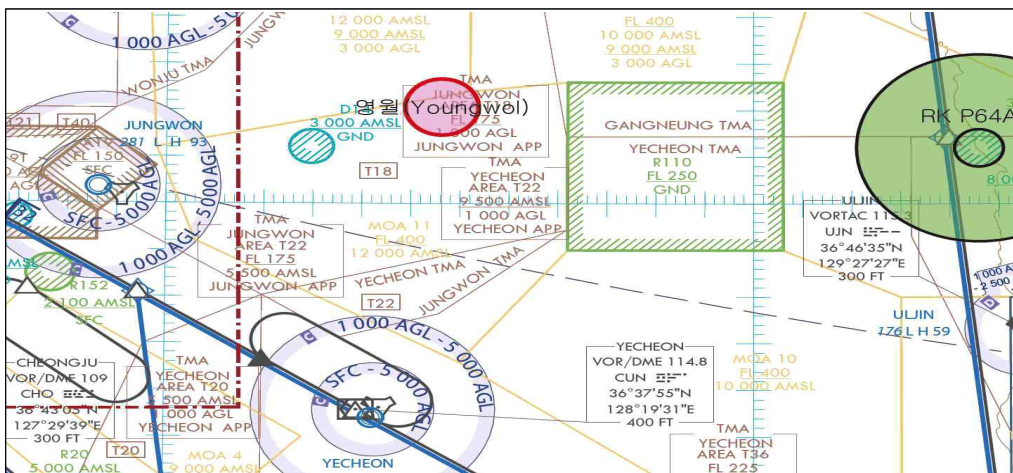
(3) Any change to the contents of these pages will be notified by NOTAM.

5. DIAGRAMS

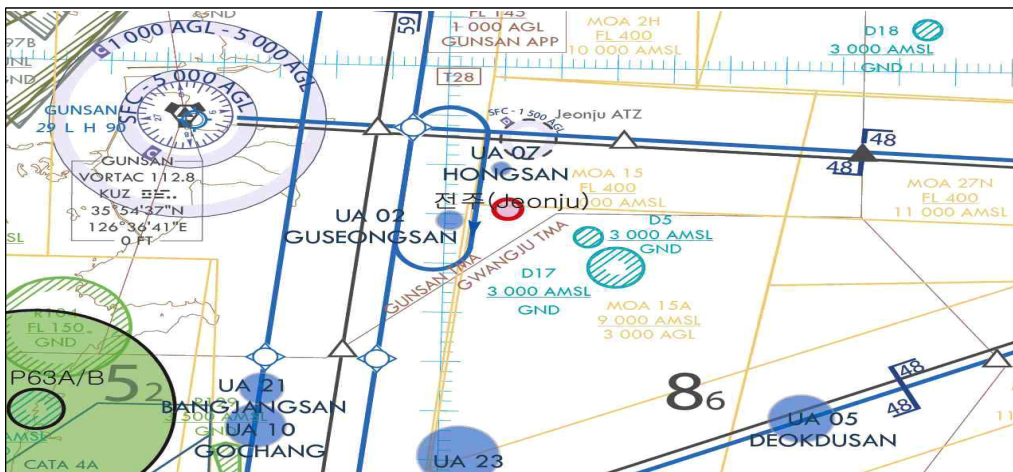




부산 (Busan)

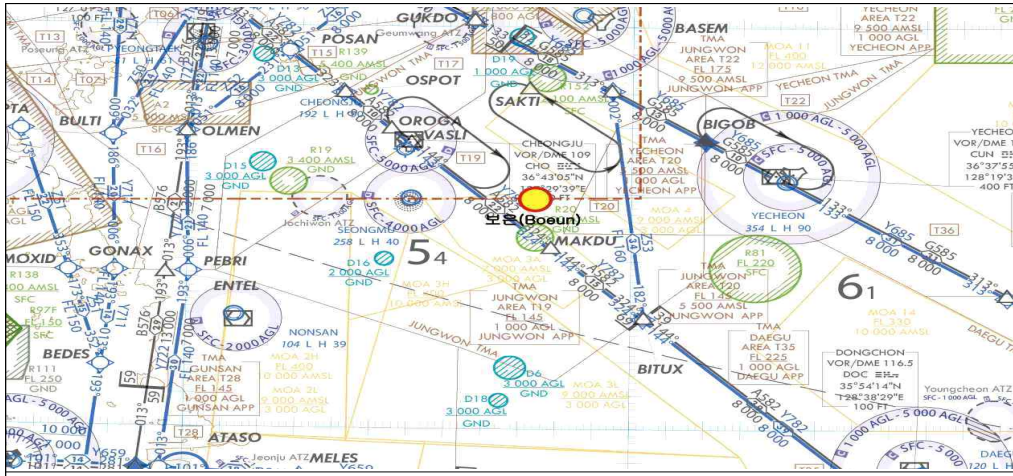


영월 (Youngweol)

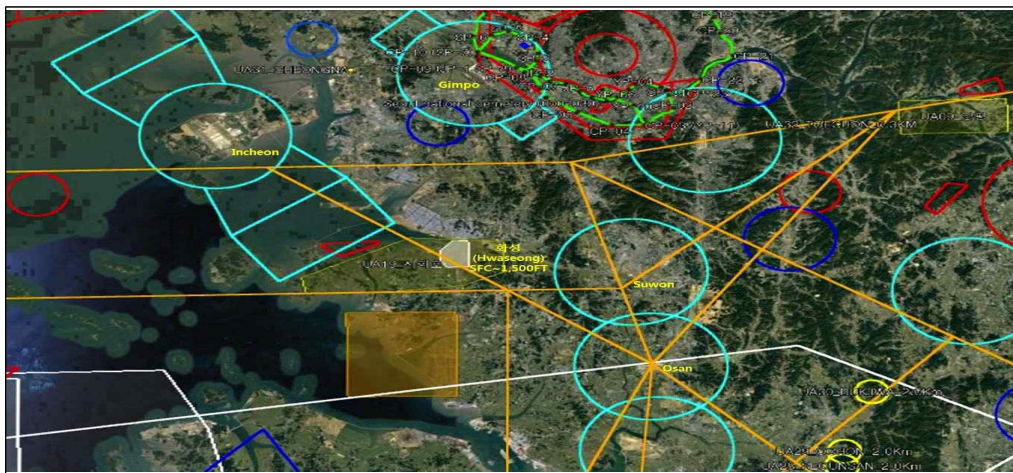


전주 (Jeonju)





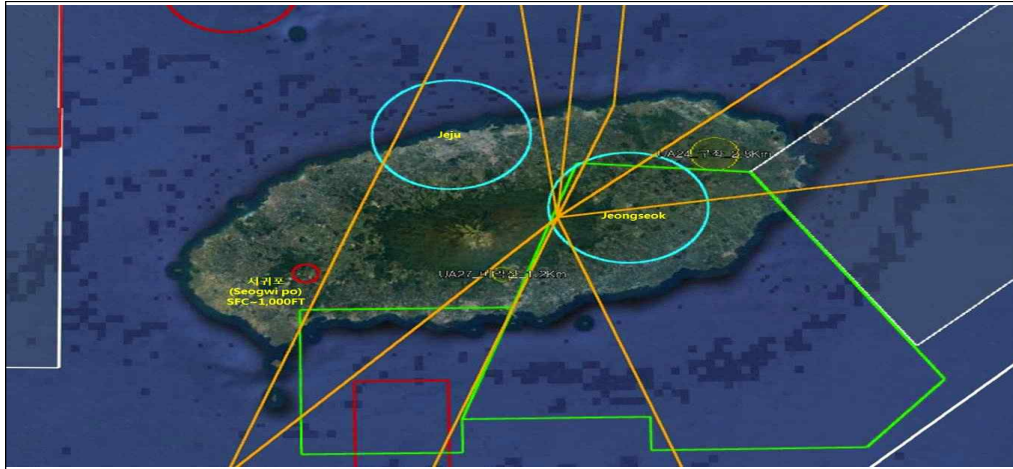
보은 (Boeun)



화성 (Hwaseong)



광양 (Gwangyang)



서귀포 (Seogwi po)