

TEL : 82-32-880-0256  
FAX : 82-32-889-5905  
AFS : RKRRYNYX  
E-mail : aisd@molit.go.kr  
Web : http://ais.casa.go.kr

**REPUBLIC OF KOREA**  
**Ministry of Land, Infrastructure and Transport**  
**Office of Civil Aviation**  
11, Doum 6-ro, Sejong-si, 30103, Republic of Korea

**AIP**  
**Supplement 22/18**  
**22 NOV 2018**

**GEN : NIL**

**ENR : Enroute**

**A D : NIL**

## TEMPORARY RESTRICTED AREAS ESTABLISHED

### 1. INTRODUCTION

Temporary restricted areas have been established due to unmanned aerial vehicles demonstration project carried out as follows.

### 2. PERIOD

From 1600 UTC 1 JAN 2019 to 1459 UTC 31 DEC 2019

### 3. WORKING AREAS

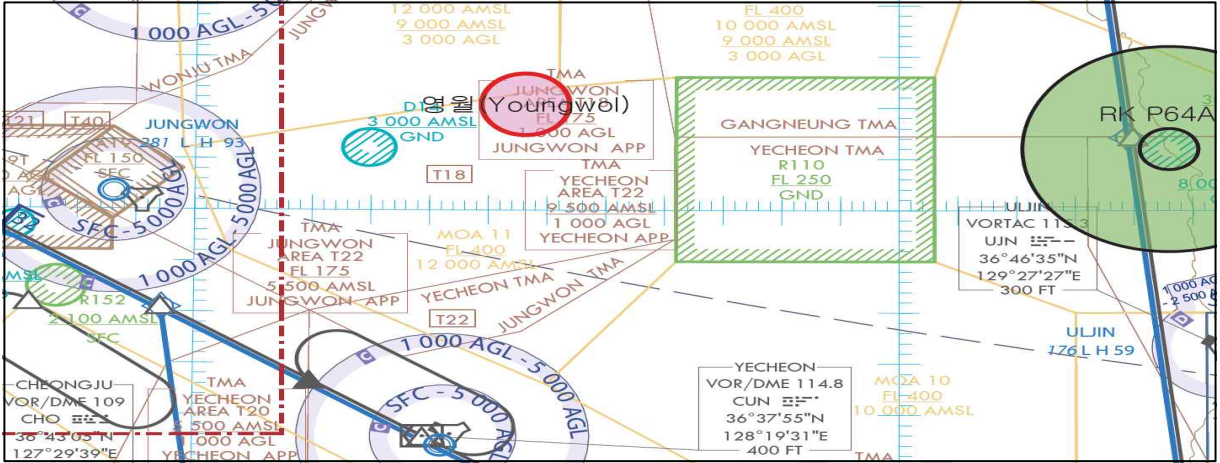
No.	Name	Lateral Limits	Vertical Limits
1	Youngweol (영월)	A circle radius 3 NM centered on 37°10'20"N 128°28'07"E	SFC ~ 1 500 ft
2	Jeonju (전주)	A circle radius 1 NM centered on 35°45'34"N 127°05'33"E	SFC ~ 1 000 ft
3	Boeun (보은)	A circle radius 3 km centered on 36°34'15"N 127°48'07"E	SFC ~ 1 000 ft

### 4. REMARKS

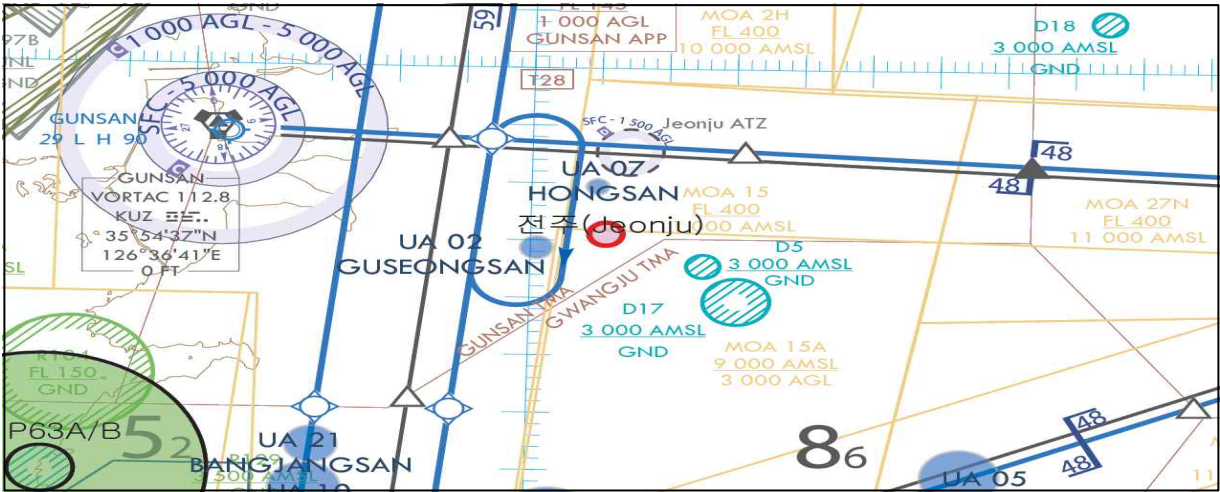
- (1) For pre-coordination and flight APV, CTC Flight Operation Division,  
Seoul Regional Office of Aviation at TEL +82-32-740-2152, 2153
- (2) The above flight restricted areas are shown in the diagram.
- (3) Any change to the contents of these pages will be notified by NOTAM.

5. DIAGRAM

① Youngweol(영월) : 반경 3 NM, 고도 1 500 ft(원형)



② Jeonju(전주) : 반경 1 NM, 고도 1 000 ft(원형)



③ Boeun(보은) : 반경 3 km, 고도 1 000 ft(원형)

