

TEL : 82-32-880-0256
FAX : 82-32-889-5905
AFS : RKRRYNYX
E-mail : aisd@molit.go.kr
Web : http://ais.casa.go.kr

REPUBLIC OF KOREA

Ministry of Land, Infrastructure and Transport
Office of Civil Aviation
11, Doum 6-ro, Sejong-si, 30103, Republic of Korea

AIRAC
AIP
Supplement 8/18
7 JUN 2018

GEN : NIL

ENR : NIL

A D : Yangyang/Yangyang INTL(RKNY)

OPERATIONAL RESTRICTIONS OF RNAV(GNSS) RWY 33

1. INTRODUCTION

The RNAV(GNSS) RWY 33 LNAV approach procedure will be not operated in Yangyang International Airport due to change MDA(H).

2. PERIOD

From 1600 UTC 18 JUL 2018 To 1600 UTC 15 DEC 2018

3. APPROACH LANDING MINIMA (See the CHART)

4. REMARKS

- (1) RNAV(GNSS) RWY 33 LNAV/VNAV(DA/DH 640/413) approach procedure is normal operated.
- (2) Any change to the contents of these pages will be notified by NOTAM.

5. CHART

AIP
Republic of Korea

RKNY AD CHART 2 - 16
28 SEP 2017

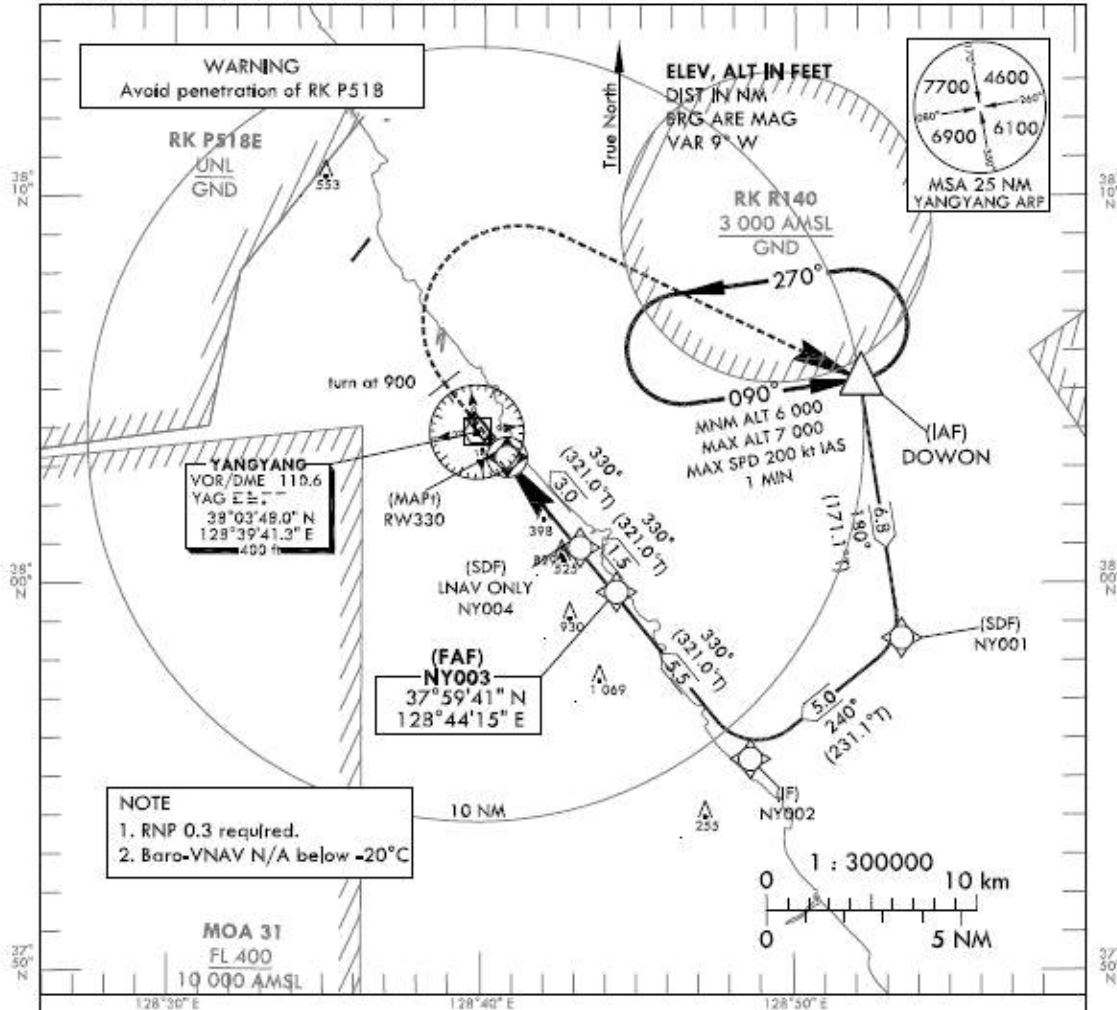
INSTRUMENT
APPROACH
CHART - ICAO

AERODROME ELEV 241 ft
HEIGHTS RELATED TO
THR RWY 33 - ELEV 227 ft

GANGNEUNG APP 124.6
YANGYANG TWR 118.85
124.375

YANGYANG/Intl(RKNY)
RNAV(GNSS) RWY 33

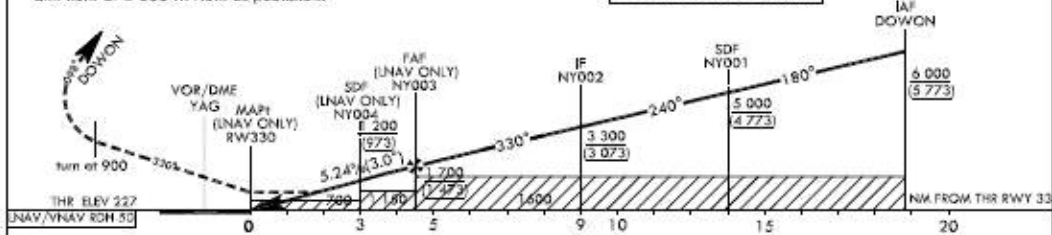
Note : Approach and circle-to-land under ICAO Flight Procedures.



MISSED APPROACH

Climb on HDG 329° to 900 ft, then turn right to DOWON and hold at 6 000 ft. Hold as published.

TRANSITION ALT 14 000
TRANSITION LVL FL 140



CATEGORY	DA(H)/MDA(H)	A				B				C				D				Rate of descent V/V fpm	
		60	90	120	150	180	210	240	270	300	330	360	390	420	450				
LNAV	FULL	700	1 500 m				1 200 m				1 900 m				318	478	637	796	955
	ALS INOP	(473)	2 200 m																
LNAV/VNAV	FULL	640	1 200 m				1 900 m								318	478	637	796	955
	ALS INOP	(413)																	
Circling			700(460)	740(500)	1 160(920)	1 180(940)	2 400 m	2 800 m	4 300 m	4 600 m									

Change : Information of landing minima.