

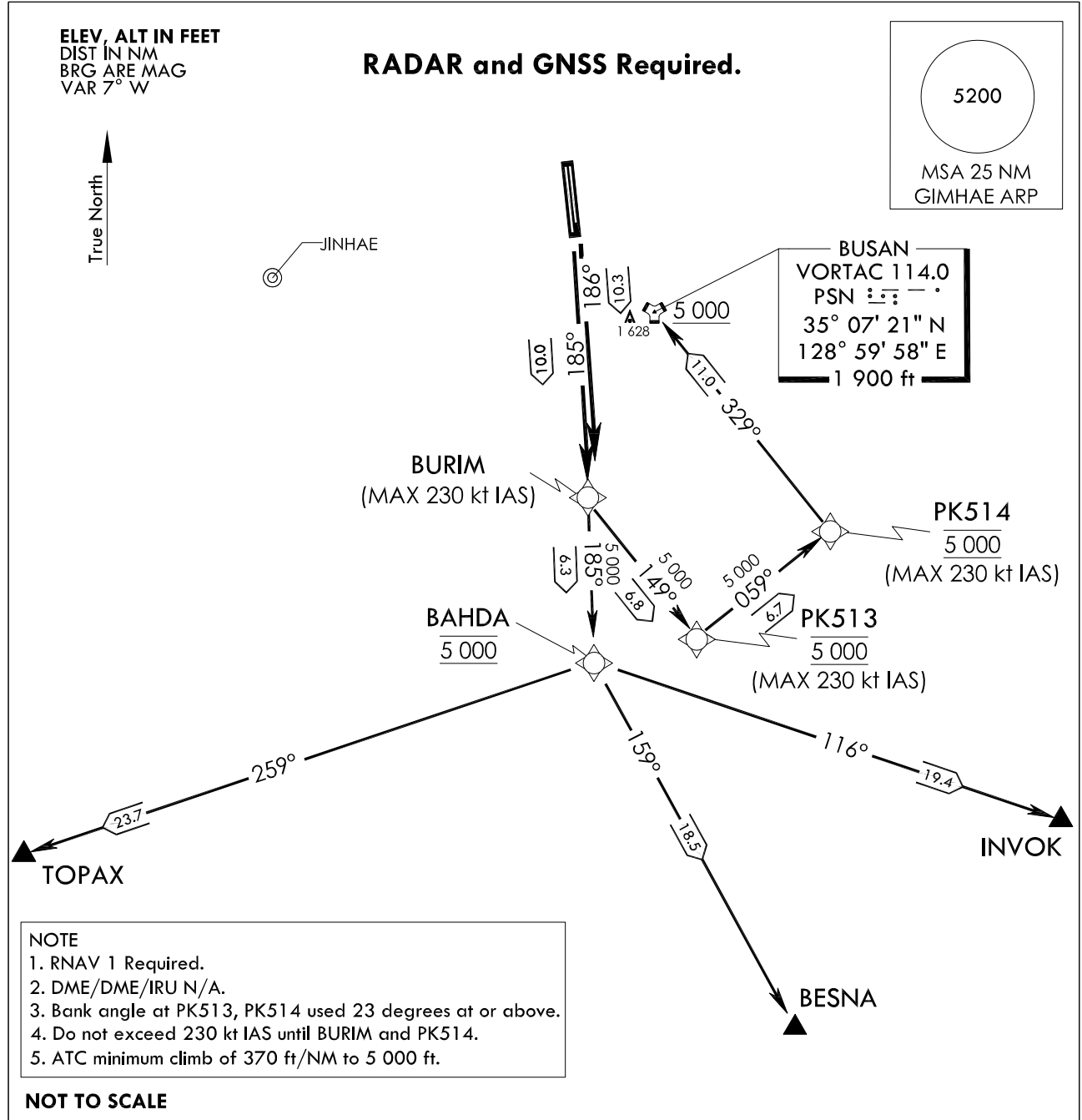
**STANDARD DEPARTURE
CHART - INSTRUMENT(SID)**

TRANSITION ALT 14 000
TRANSITION LVL FL 140

GIMHAE DEP 125.5
363.8
GIMHAE TWR 118.1
118.450

**BUSAN/Gimhae Intl(RKPK)
RWY 18L/R
RNAV(GNSS) BURIM 2**

Note : Departure under U.S. TERPS.



DEPARTURE ROUTE DESCRIPTION

BURIM 2 DEPARTURE

RUNWAY 18R : Climb on course 185° to BURIM, thence.....

RUNWAY 18L : Climb on course 186° to BURIM, thence.....

..... via (TRANSITIONS routes) and climb assigned altitude by ATC.

TOPAX transition : From BURIM on track 185° to cross BAHDA at 5 000 ft, then track 259° to TOPAX.

BESNA transition : From BURIM on track 185° to cross BAHDA at 5 000 ft, then track 159° to BESNA.

INVOK transition : From BURIM on track 185° to cross BAHDA at 5 000 ft, then track 116° to INVOK.

BUSAN (PSN) transition : From BURIM on track 149° to cross PK513 at 5 000 ft,
then track 059° to cross PK514 at 5 000 ft,
then track 329° to cross BUSAN(PSN) at or above 5 000 ft.

Change : Amended altitude limitation phrases.

BUSAN/Gimhae INTL(RKPK)
RWY 18L/R
RNAV(GNSS) BURIM 2

AERONAUTICAL DATA TABULATION

Standard Instrument Departure Procedure Coding Tables

Departure Route - RWY 18L

Serial Number	Path Descriptor	Waypoint Identifier	Fly-over	Course/Track °M(°T)	Distance (NM)	Turn direction	Altitude (ft)	Speed (kt)	Coordinates	VPA/TCH	Navigation specification	Remarks
001	-	RWY 36R	-	-	-	-	-	-	351010.10 N 1285626.14 E	-	RNAV 1	DER
002	CF	BURIM	-	185.79(178.33)	10.29	-	-	-230	345952.3 N 1285648.1 E	-	RNAV 1	CG 370 ft/NM to 5 000 ft

Departure Route - RWY 18R

Serial Number	Path Descriptor	Waypoint Identifier	Fly-over	Course/Track °M(°T)	Distance (NM)	Turn direction	Altitude (ft)	Speed (kt)	Coordinates	VPA/TCH	Navigation specification	Remarks
001	-	RWY 36L	-	-	-	-	-	-	350954.69 N 1285619.79 E	-	RNAV 1	DER
002	CF	BURIM	-	185.25(177.79)	10.03	-	-	-230	345952.3 N 1285648.1 E	-	RNAV 1	CG 370 ft/NM to 5 000 ft

RNAV BURIM 2 - TOPAX Transition

Serial Number	Path Descriptor	Waypoint Identifier	Fly-over	Course/Track °M(°T)	Distance (NM)	Turn direction	Altitude (ft)	Speed (kt)	Coordinates	VPA/TCH	Navigation specification	Remarks
001	TF	BAHDA	-	185.24(177.77)	6.27	-	@5 000	-	345334.4 N 1285705.8 E	-	RNAV 1	CG 370 ft/NM to 5 000 ft
002	TF	TOPAX	-	258.78(251.31)	23.69	-	+5 000	-	344555.3 N 1282951.7 E	-	RNAV 1	-

RNAV BURIM 2 - BESNA Transition

Serial Number	Path Descriptor	Waypoint Identifier	Fly-over	Course/Track °M(°T)	Distance (NM)	Turn direction	Altitude (ft)	Speed (kt)	Coordinates	VPA/TCH	Navigation specification	Remarks
001	TF	BAHDA	-	185.24(177.77)	6.27	-	@5 000	-	345334.4 N 1285705.8 E	-	RNAV 1	CG 370 ft/NM to 5 000 ft
002	TF	BESNA	-	158.81(151.34)	18.51	-	+5 000	-	343718.0 N 1290751.0 E	-	RNAV 1	-

RNAV BURIM 2 - INVOK Transition

Serial Number	Path Descriptor	Waypoint Identifier	Fly-over	Course/Track °M(°T)	Distance (NM)	Turn direction	Altitude (ft)	Speed (kt)	Coordinates	VPA/TCH	Navigation specification	Remarks
001	TF	BAHDA	-	185.24(177.77)	6.27	-	@5 000	-	345334.4 N 1285705.8 E	-	RNAV 1	CG 370 ft/NM to 5 000 ft
002	TF	INVOK	-	116.21(108.75)	19.38	-	+5 000	-	344719.0 N 1291923.0 E	-	RNAV 1	-

RNAV BURIM 2 - PSN(VORTAC) Transition

Serial Number	Path Descriptor	Waypoint Identifier	Fly-over	Course/Track °M(°T)	Distance (NM)	Turn direction	Altitude (ft)	Speed (kt)	Coordinates	VPA/TCH	Navigation specification	Remarks
001	TF	PK513	-	148.71(141.24)	6.83	-	@5 000	-230	345432.3 N 1290159.8 E	-	RNAV 1	CG 370 ft/NM to 5 000 ft
002	TF	PK514	-	058.76(051.29)	6.71	-	@5 000	-230	345844.3 N 1290822.2 E	-	RNAV 1	-
003	TF	PSN	-	328.82(321.35)	11.03	-	+5 000	-	350721.5 N 1285958.5 E	-	RNAV 1	VORTAC

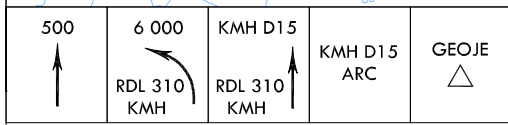
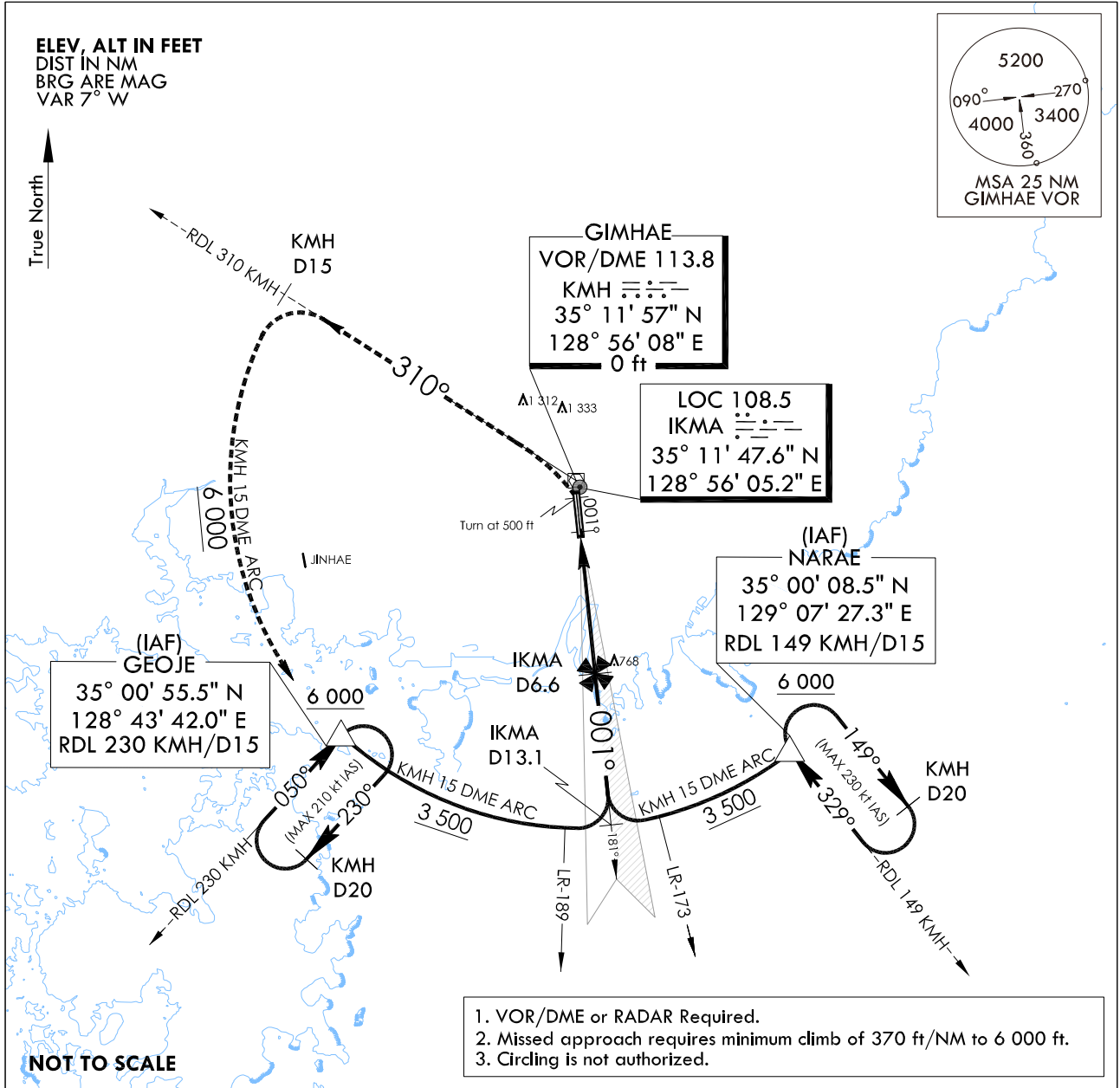
**INSTRUMENT
APPROACH
CHART**

AERODROME ELEV 13 ft
**HEIGHTS RELATED TO
RWY 36L ELEV TDZ** 13 ft

GIMHAE APP 125.5 364.0
GIMHAE TWR 118.1 118.45
233.3 236.6

BUSAN/Gimhae Intl(RKPK)
ILS Y
RWY 36L

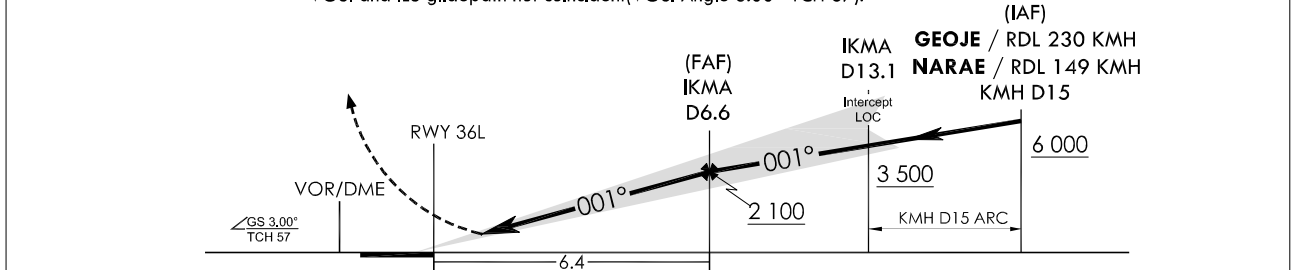
Note : Approach and circle to land under U.S. TERPS.



MISSED APPROACH
Climb to 500 ft then left turn HDG 310° to intercept RDL 310 KMH, then RDL 310 KMH to 15 DME and 6 000 ft, then arc KMH 15 DME to GEOJE and hold.

TRANSITION ALT	14 000
TRANSITION LVL	FL 140

NOTE
Use IKMA DME when on the localizer course.
VGSI and ILS glidepath not coincident (VGSI Angle 3.00° TCH 67).



CATEGORY	A	B	C	D
S-ILS 36L	213/18	200 (200 - 1/2)	213/24*	200(200-1/2) (*Use civil only RVR 18)
	When TDZ/CL LGT INOP, increase RVR to 24			
ALS INOP	213/40 200(200 - 3/4)			

Change : Information of holding direction.

INTENTIONALLY

LEFT

BLANK

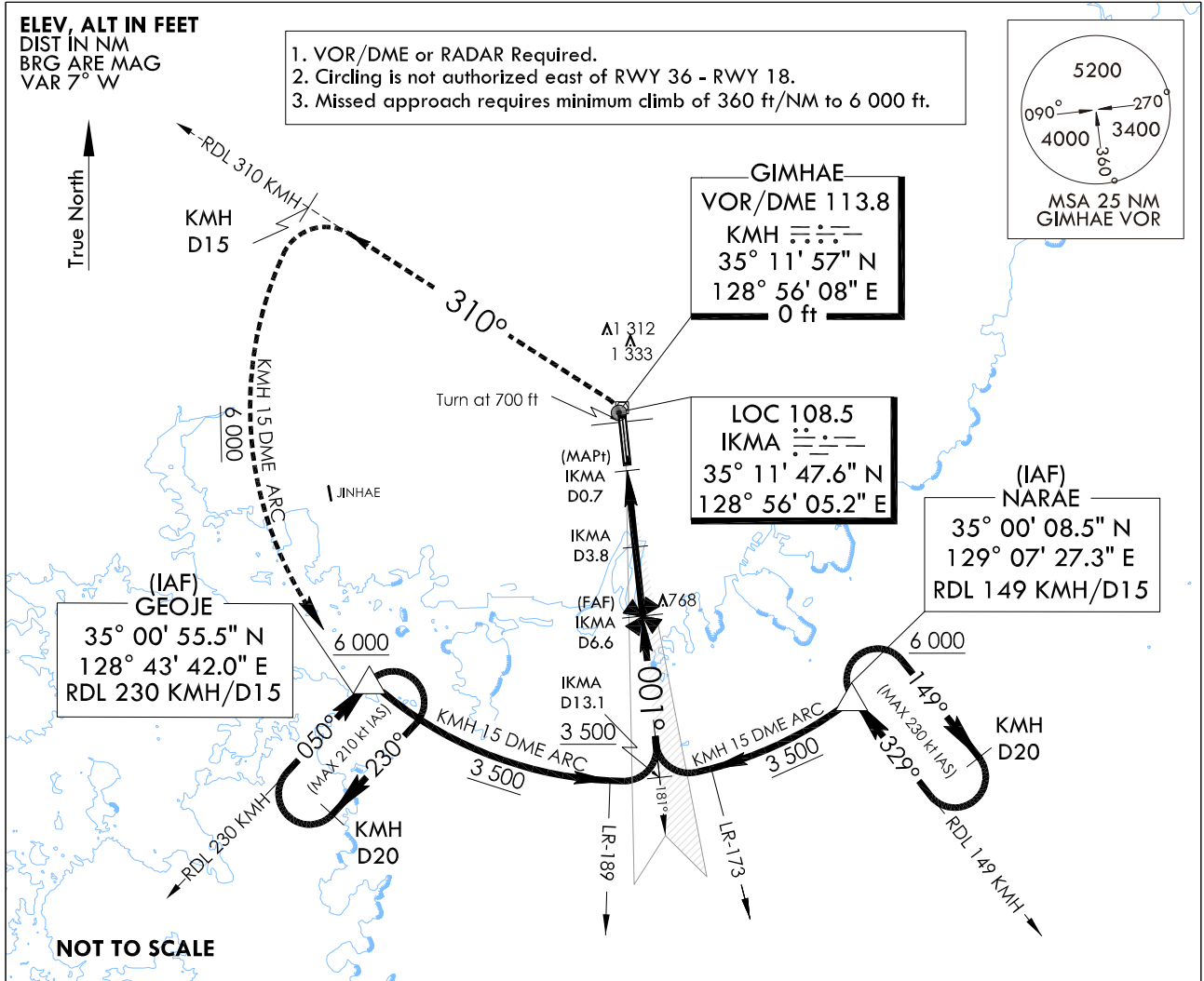
**INSTRUMENT
APPROACH
CHART**

AERODROME ELEV 13 ft
**HEIGHTS RELATED TO
RWY 36L ELEV TDZ** 13 ft

GIMHAE APP 125.5 364.0
GIMHAE TWR 118.1 118.45
233.3 236.6

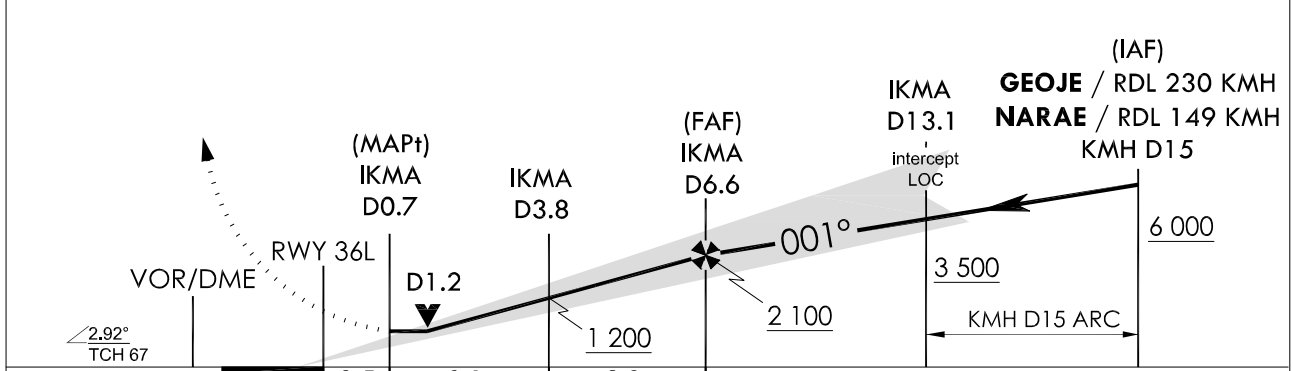
**BUSAN/Gimhae Intl(RKPK)
LOC/DME Y
RWY 36L**

Note : Approach and circle to land under U.S. TERPS.



700	6 000	KMH D15	KMH D15 ARC	GEOJE	MISSED APPROACH Climb to 700 ft, then left turn climbing 6 000 ft on RDL 310 KM to 15 DME, then arc KM 15 DME to GEOJE and hold.
↑	RDL 310 KM	RDL 310 KM	↑	△	

NOTE
Use IKMA DME when on the localizer course.



CATEGORY	A	B	C	D
S-LOC 36L	400/24 388(400 - 1/2)		400/35 388(400 - 5/8)	
ALS INOP	400/55 388(400 - 1)		400/60 388(400 - 1 1/8)	
CIRCLING	520-1 507(600 - 1)	580-1 567(600 - 1)	1 360 - 3 1 347(1 400 - 3)	1 700 - 3 1 687(1 700 - 3)

Change : Information of holding direction.

INTENTIONALLY

LEFT

BLANK

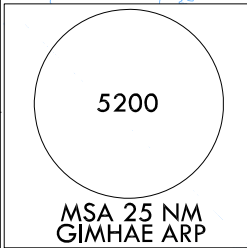
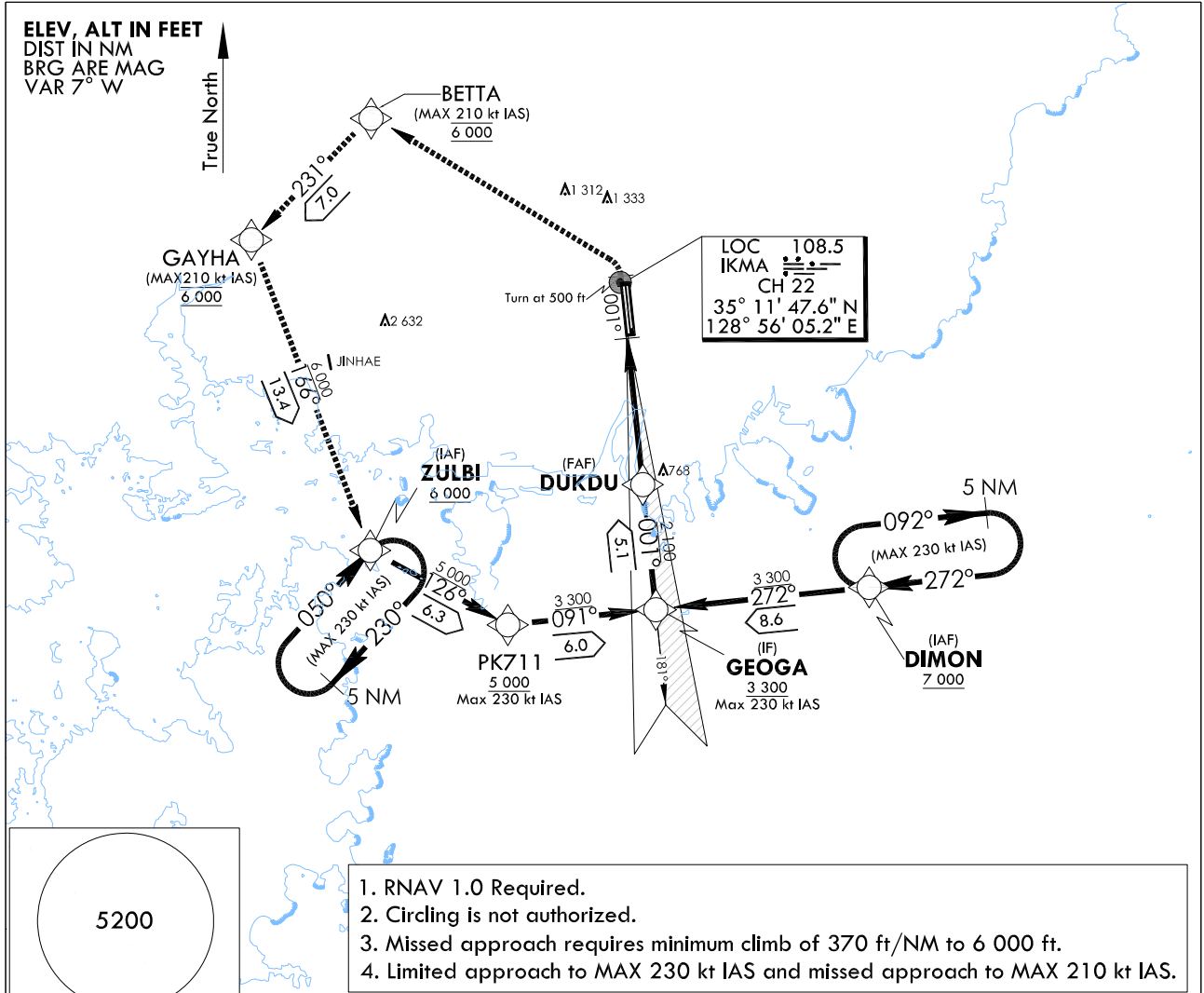
**INSTRUMENT
APPROACH
CHART**

AERODROME ELEV 13 ft
HEIGHTS RELATED TO
RWY 36L ELEV TDZ 13 ft

GIMHAE APP 125.5 364.0
GIMHAE TWR 118.1 118.45
233.3 236.6

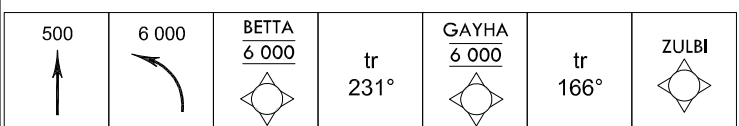
BUSAN/Gimhae Intl(RKPK)
ILS Z
RWY 36L

Note : Approach and circle to land under U.S. TERPS.



NOT TO SCALE

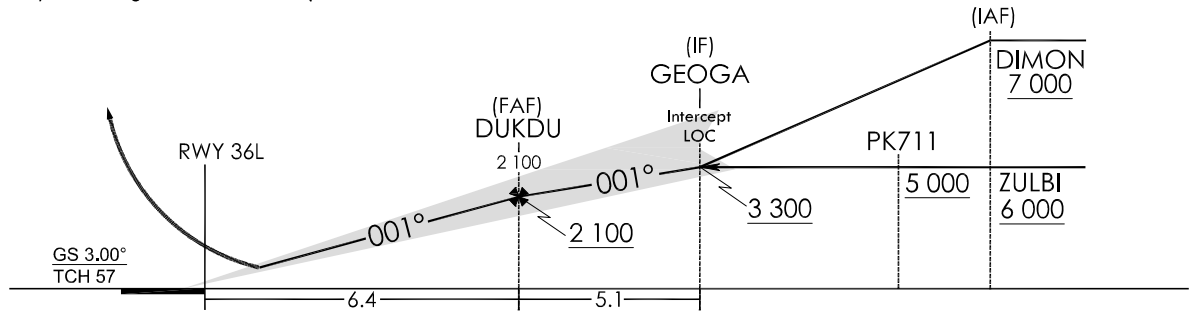
GNSS and RADAR Required.



TRANSITION ALT 14 000
TRANSITION LVL FL 140

NOTE : Use IKMA DME when on the localizer course.
NOTE : VGSI and ILS glidepath not coincident (VGSI Angle 3.00° TCH 67).

MISSED APPROACH
Climb to 500, then climbing left to 6 000 direct BETTA, then track 231° to GAYHA, then track 166° to ZULBI and HOLD.



CATEGORY	A	B	C	D
S-ILS 36L		213/18	200(200 - 1/2)	
		When TDZ/CL LGT INOP, increase RVR to 24		
ALS INOP		213/40	200(200 - 3/4)	

Change : Information of holding direction.

BUSAN/Gimhae INTL(RKPK)

ILS Z
RWY 36L

AERONAUTICAL DATA TABULATION

Instrument Approach Procedure Coding Tables

ILS Z RWY 36L - via DIMON to GEOGA(IF)

Serial Number	Path Descriptor	Waypoint Identifier	Fly-over	Course/Track °M(°T)	Distance (NM)	Turn direction	Altitude (ft)	Speed (kt)	Coordinates	VPA/TCH	Navigation specification	Remarks
001	-	DIMON	-	-	-	-	+7 000	-230	345923.1 N 1290815.3 E	-	RNAV 1	IAF
002	TF	GEOGA	-	271.5(264.1)	8.6	-	+3 300	-230	345829.0 N 1285748.0 E	-	RNAV 1	IF

ILS Z RWY 36L - via ZULBI to GEOGA(IF)

Serial Number	Path Descriptor	Waypoint Identifier	Fly-over	Course/Track °M(°T)	Distance (NM)	Turn direction	Altitude (ft)	Speed (kt)	Coordinates	VPA/TCH	Navigation specification	Remarks
001	-	ZULBI	-	-	-	-	+6 000	-230	350051.7 N 1284347.2 E	-	RNAV 1	IAF
002	TF	PK711	-	125.8(118.3)	6.3	-	+5 000	-230	345751.9 N 1285032.3 E	-	RNAV 1	SDF
002	TF	GEOGA	-	091.5(084.1)	6.0	-	+3 300	-230	345829.0 N 1285748.0 E	-	RNAV 1	IF

ILS Z RWY 36L - via GEOGA(IF) to MAHF

Serial Number	Path Descriptor	Waypoint Identifier	Fly-over	Course/Track °M(°T)	Distance (NM)	Turn direction	Altitude (ft)	Speed (kt)	Coordinates	VPA/TCH	Navigation specification	Remarks
001	TF	GEOGA	-	-	-	-	+3 300	-230	345829.0 N 1285748.0 E	-	RNAV 1	IF
002	TF	DUKDU	-	001.4(354.0)	5.1	-	+2 100	-	350332.1 N 1285709.1 E	-	-	FAF
003	-	DA	-	001.4(354.0)	-	-	-	-	-	-	LOC	DA
004	-	RWY 36L	-	001.4(354.0)	-	-	-	-	350954.7 N 1285619.8 E	3.0/57	LOC	-
005	VA	-	-	001.4(354.0)	-	-	+500	-210	-	-	RNAV 1	CG 370 ft/NM to 6 000
006	DF	BETTA	-	-	-	L	@6 000	-210	351824.2 N 1284346.2 E	-	RNAV 1	-
007	TF	GAYHA	-	231.2(223.8)	7.0	-	@6 000	-210	351322.4 N 1283754.4 E	-	RNAV 1	-
008	TF	ZULBI	-	166.3(158.9)	13.4	-	+6 000	-230	350051.7 N 1284347.2 E	-	RNAV 1	-

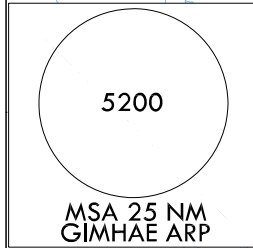
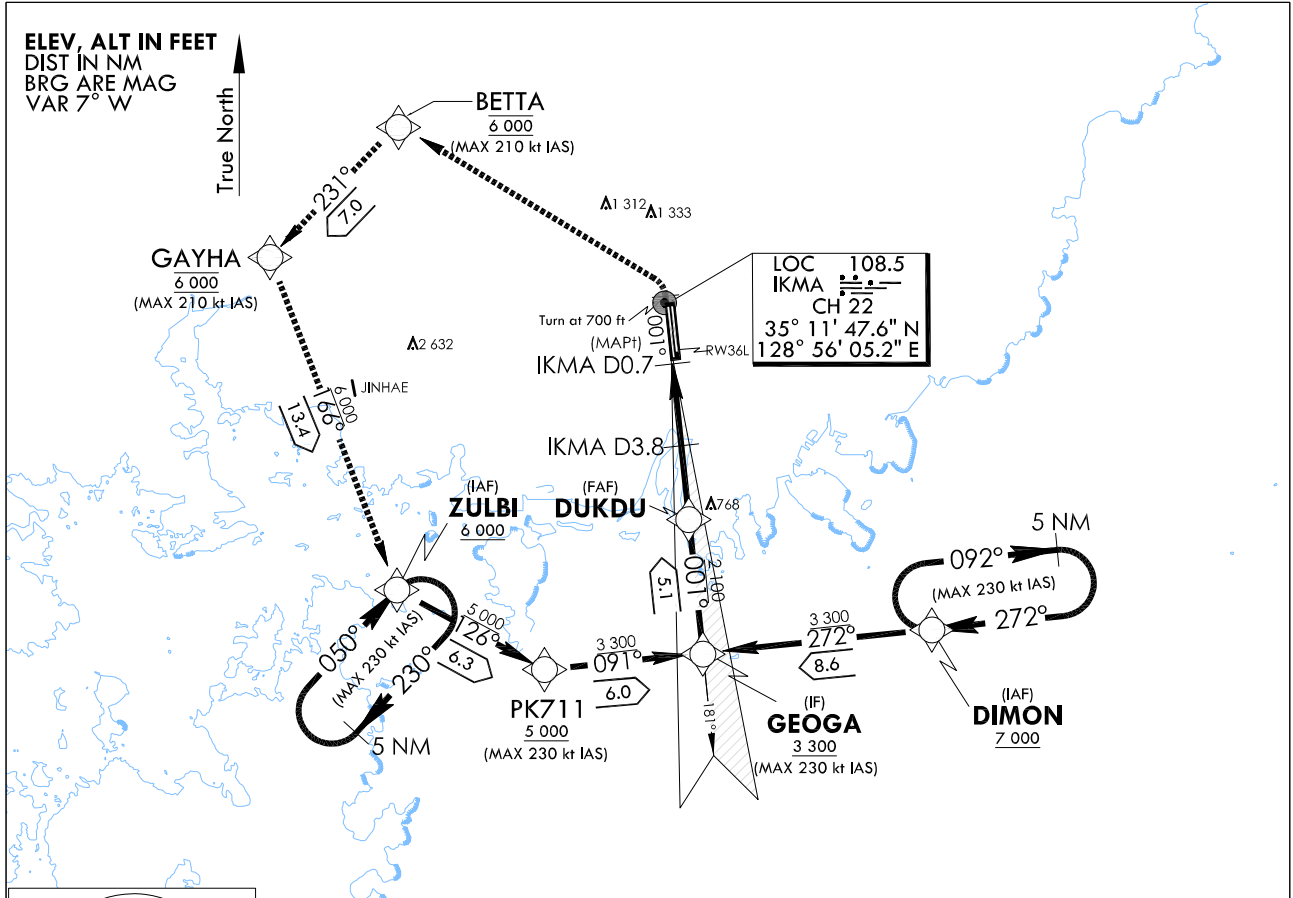
**INSTRUMENT
APPROACH
CHART**

AERODROME ELEV 13 ft
HEIGHTS RELATED TO
RWY 36L ELEV TDZ 13 ft

GIMHAE APP 125.5 364.0
GIMHAE TWR 118.1 118.45
233.3 236.6

BUSAN/Gimhae Intl(RKPK)
LOC/DME Z
RWY 36L

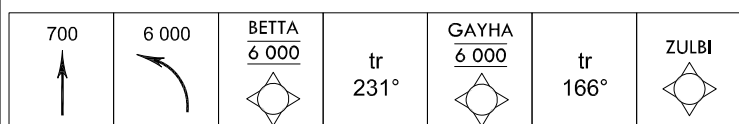
Note : Approach and circle to land under U.S. TERPS.



1. RNAV 1.0 Required.
2. Circling is not authorized east of RWY 36 - RWY 18.
3. Missed approach requires minimum climb of 360 ft/NM to 6 000 ft.
4. Limited approach to MAX 230 kt IAS and missed approach to MAX 210 kt IAS.

NOT TO SCALE

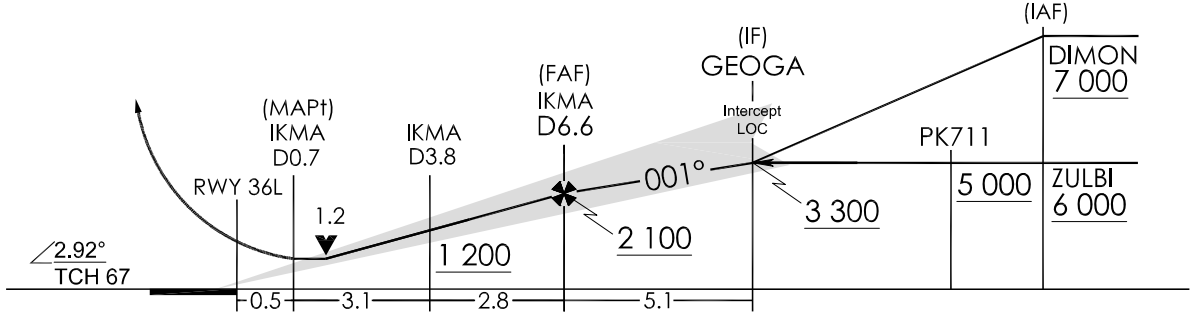
GNSS and RADAR Required.



TRANSITION ALT 14 000
TRANSITION LVL FL 140

MISSED APPROACH

Climb to 700, then climbing left to 6 000 direct BETTA, then track 231° to GAYHA, then track 166° to ZULBI and HOLD.



CATEGORY	A	B	C	D
S-LOC 36L	400/24 388(400 - 1/2)		400/35 388(400 - 5/8)	
ALS INOP	400/55 388(400 - 1)		400/60 388(400 - 1 1/8)	
CIRCLING	520-1 507(600 - 1)	580-1 567(600 - 1)	1 360 - 3 1 347(1 400 - 3)	1 700 - 3 1 687(1 700 - 3)

Change : Information of holding direction.

BUSAN/Gimhae INTL(RKPK)
LOC/DME Z
RWY 36L

AERONAUTICAL DATA TABULATION

Instrument Approach Procedure Coding Tables

LOC/DME Z RWY 36L - via DIMON to GEOGA(IF)

Serial Number	Path Descriptor	Waypoint Identifier	Fly-over	Course/Track °M(°T)	Distance (NM)	Turn direction	Altitude (ft)	Speed (kt)	Coordinates	VPA/TCH	Navigation specification	Remarks
001	-	DIMON	-	-	-	-	+7 000	-230	345923.1 N 1290815.3 E	-	RNAV 1	IAF
002	TF	GEOGA	-	271.5(264.1)	8.6	-	+3 300	-230	345829.0 N 1285748.0 E	-	RNAV 1	IF

LOC/DME Z RWY 36L - via ZULBI to GEOGA(IF)

Serial Number	Path Descriptor	Waypoint Identifier	Fly-over	Course/Track °M(°T)	Distance (NM)	Turn direction	Altitude (ft)	Speed (kt)	Coordinates	VPA/TCH	Navigation specification	Remarks
001	-	ZULBI	-	-	-	-	+6 000	-230	350051.7 N 1284347.2 E	-	RNAV 1	IAF
002	TF	PK711	-	125.8(118.3)	6.3	-	+5 000	-230	345751.9 N 1285032.3 E	-	RNAV 1	SDF
002	TF	GEOGA	-	091.5(084.1)	6.0	-	+3 300	-230	345829.0 N 1285748.0 E	-	RNAV 1	IF

LOC/DME Z RWY 36L - via GEOGA(IF) to MAHF

Serial Number	Path Descriptor	Waypoint Identifier	Fly-over	Course/Track °M(°T)	Distance (NM)	Turn direction	Altitude (ft)	Speed (kt)	Coordinates	VPA/TCH	Navigation specification	Remarks
001	TF	GEOGA	-	-	-	-	+3 300	-230	345829.0 N 1285748.0 E	-	RNAV 1	IF
002	TF	DUKDU	-	001.4(354.0)	5.1	-	+2 100	-	350332.1 N 1285709.1 E	-	LOC	FAF
003	-	IKMA 3.8D	-	001.4(354.0)	2.8	-	+1 200	-	-	-	LOC	SDF
004	-	IKMA 0.7D	-	001.4(354.0)	3.1	-	+400	-	-	-	LOC	MAPt
005	-	RWY 36L	-	001.4(354.0)	0.5	-	-	-	-	3.0/67	LOC	-
006	VA	-	-	001.4(354.0)	-	-	+700	-210	351824.2 N 1284346.2 E	-	RNAV 1	CG 360 ft/NM to 6 000
007	DF	BETTA	-	-	-	L	@6 000	-210	351322.4 N 1283754.4 E	-	RNAV 1	CG 360 ft/NM to 6 000
008	TF	GAYHA	-	231.2(223.8)	7.0	-	@6 000	-210	350051.7 N 1284347.2 E	-	RNAV 1	-
009	TF	ZULBI	-	166.3(158.9)	13.4	-	+6 000	-230	-	-	RNAV 1	-

INSTRUMENT APPROACH CHART

AERODROME ELEV 13 ft
HEIGHTS RELATED TO
RWY 36L ELEV TDZ 13 ft

GIMHAE APP 125.5 364.0
GIMHAE TWR 118.1 118.45
233.3 236.6

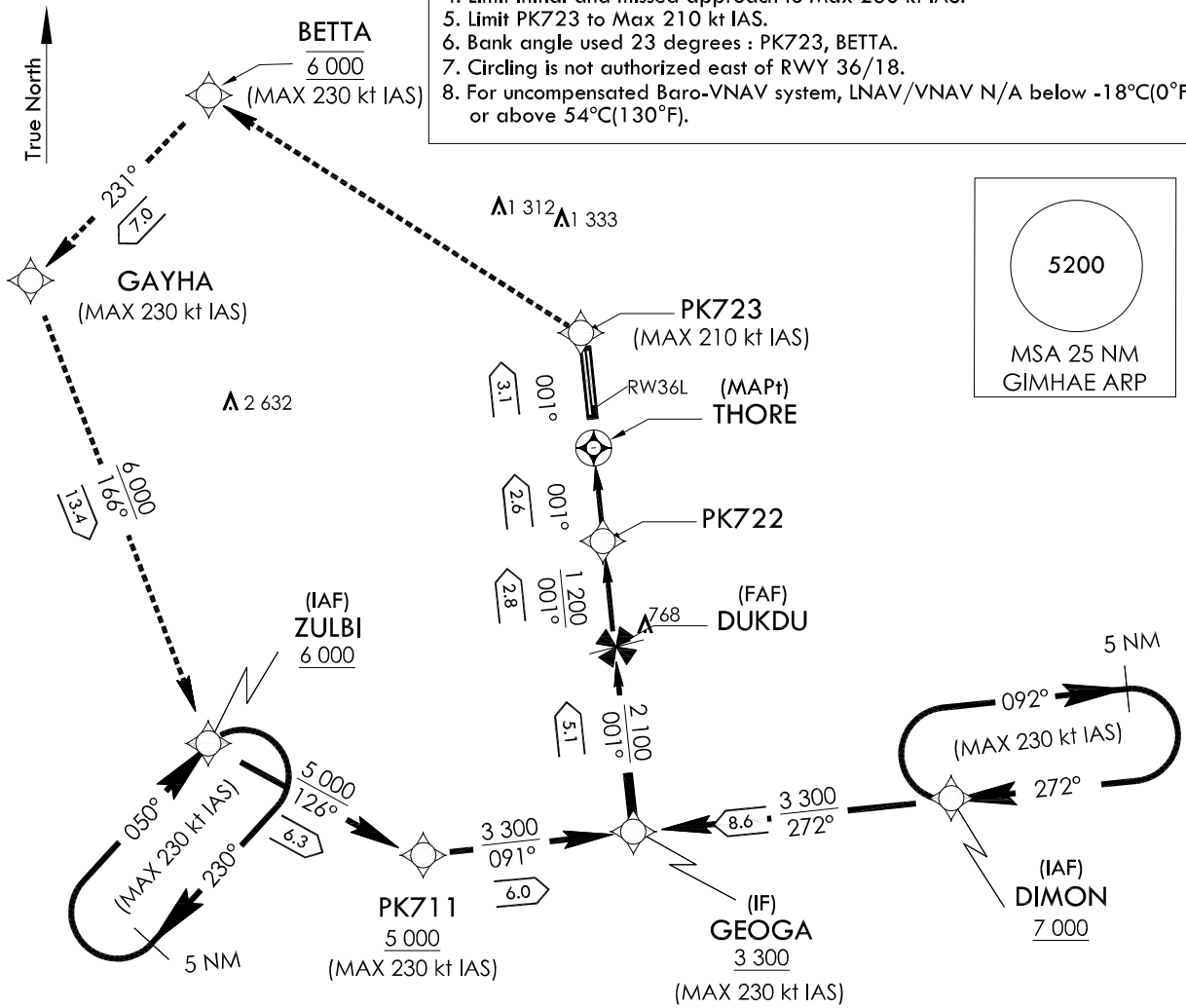
BUSAN/Gimhae Intl(RKPK)
RNAV(GNSS)
RWY 36L

Note : Approach and circle to land under U.S. TERPS.

ELEV, ALT IN FEET
DIST IN NM
BRG ARE MAG
VAR 7° W

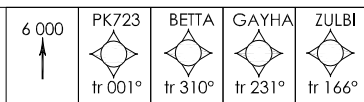
NOTE :

1. RNP 0.3 Required.
2. DME/DME RNP 0.3 N/A.
3. Missed approach requires minimum climb of 390 ft/NM to 6 000 ft.
4. Limit initial and missed approach to Max 230 kt IAS.
5. Limit PK723 to Max 210 kt IAS.
6. Bank angle used 23 degrees : PK723, BETTA.
7. Circling is not authorized east of RWY 36/18.
8. For uncompensated Baro-VNAV system, LNAV/VNAV N/A below -18°C(0°F) or above 54°C(130°F).



NOT TO SCALE

GNSS and RADAR Required

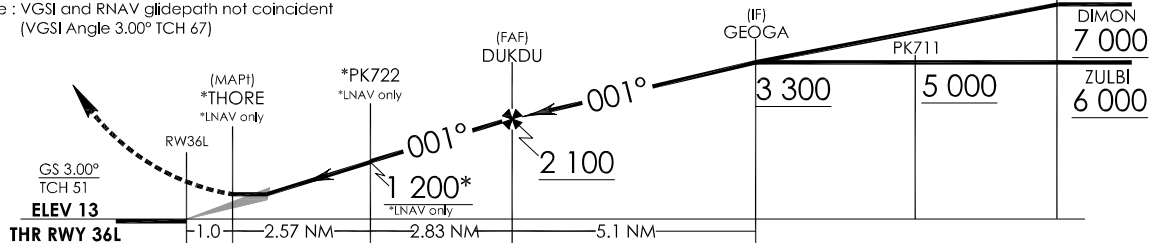


TRANSITION ALT 14 000
TRANSITION LVL FL 140

MISSED APPROACH :

Climb to 6 000 ft on track 001° to PK723, then track 310° to cross BETTA at 6 000 ft, then track 231° to GAYHA, then track 166° to ZULBI and hold

Note : VGSJ and RNAV glidepath not coincident
(VGSJ Angle 3.00° TCH 67)



CATEGORY		A	B	C	D
LNAV /VNAV	FULL		420/45 408(500- $\frac{1}{2}$)		
	ALS Inop		420-1 $\frac{3}{8}$ 408(500-1 $\frac{3}{8}$)		
LNAV	FULL	500/45 488(500- $\frac{1}{2}$)		500/55 488(500-1)	
	ALS Inop		500-1 $\frac{1}{2}$ 488(500-1 $\frac{1}{2}$)		
CIRCLING		580-1 $\frac{1}{2}$ 567(600-1 $\frac{1}{2}$)		1 360-3 1 347(1 400-3)	1 700-3 1 687(1 700-3)

Change : Information of holding direction.

BUSAN/Gimhae INTL(RKPK)
RNAV(GNSS)
RWY 36L

AERONAUTICAL DATA TABULATION

Instrument Approach Procedure Coding Tables

RNAV(GNSS) RWY 36L - via DIMON to GEOGA(IF)

Serial Number	Path Descriptor	Waypoint Identifier	Fly-over	Course/Track °M(°T)	Distance (NM)	Turn direction	Altitude (ft)	Speed (kt)	Coordinates	VPA/TCH	Navigation specification	Remarks
001	-	DIMON	-	-	-	-	+7 000	-230	345923.1 N 1290815.3 E	-	RNP APCH	IAF
002	TF	GEOGA	-	271.5(264.1)	8.6	-	+3 300	-230	345829.0 N 1285748.0 E	-	RNP APCH	IF

RNAV(GNSS) RWY 36L - via ZULBI to GEOGA(IF)

Serial Number	Path Descriptor	Waypoint Identifier	Fly-over	Course/Track °M(°T)	Distance (NM)	Turn direction	Altitude (ft)	Speed (kt)	Coordinates	VPA/TCH	Navigation specification	Remarks
001	-	ZULBI	-	-	-	-	+6 000	-230	350051.7 N 1284347.2 E	-	RNP APCH	IAF
002	TF	PK711	-	125.8(118.3)	6.3	-	+5 000	-230	345751.9 N 1285032.3 E	-	RNP APCH	SDF
002	TF	GEOGA	-	091.5(084.1)	6.0	-	+3 300	-230	345829.0 N 1285748.0 E	-	RNP APCH	IF

RNAV(GNSS) RWY 36L - via GEOGA(IF) to MAHF

Serial Number	Path Descriptor	Waypoint Identifier	Fly-over	Course/Track °M(°T)	Distance (NM)	Turn direction	Altitude (ft)	Speed (kt)	Coordinates	VPA/TCH	Navigation specification	Remarks
001	TF	GEOGA	-	-	-	-	+3 300	-230	345829.0 N 1285748.0 E	-	RNP APCH	IF
002	TF	DUKDU	-	001.4(354.0)	5.1	-	+2 100	-	350332.1 N 1285709.1 E	-	RNP APCH	FAF
003	TF	PK722	-	001.4(354.0)	2.83	-	+1 200	-	350621.1 N 1285647.3 E	-	RNP APCH	SDF
004	TF	THORE	Y	001.4(354.0)	2.57	-	+500	-	350854.9 N 1285627.5 E	-	RNP APCH	MAPI
005	TF	PK723	-	001.4(354.0)	3.08	-	-	-210	351159.2 N 1285603.7 E	-	RNP APCH	CG 390 ft/NM to 6 000
006	TF	BETTA	-	310.0(302.5)	11.9	-	-	-230	351824.2 N 1284346.2 E	-	RNP APCH	CG 390 ft/NM to 6 000
007	TF	GAYHA	-	231.2(223.8)	7.0	-	-	-230	351322.4 N 1283754.4 E	-	RNP APCH	-
008	TF	ZULBI	-	166.3(158.9)	13.4	-	+6 000	-230	350051.7 N 1284347.2 E	-	RNP APCH	-
009	HM	DIMON	-	271.7(264.2)	5.0	R	-8 000 +7 000	-230	345923.1 N 1290815.3 E	-	-	-
010	HM	ZULBI	-	050(042.5)	5.0	R	-10 000 +6 000	-230	350051.7 N 1284347.2 E	-	-	-

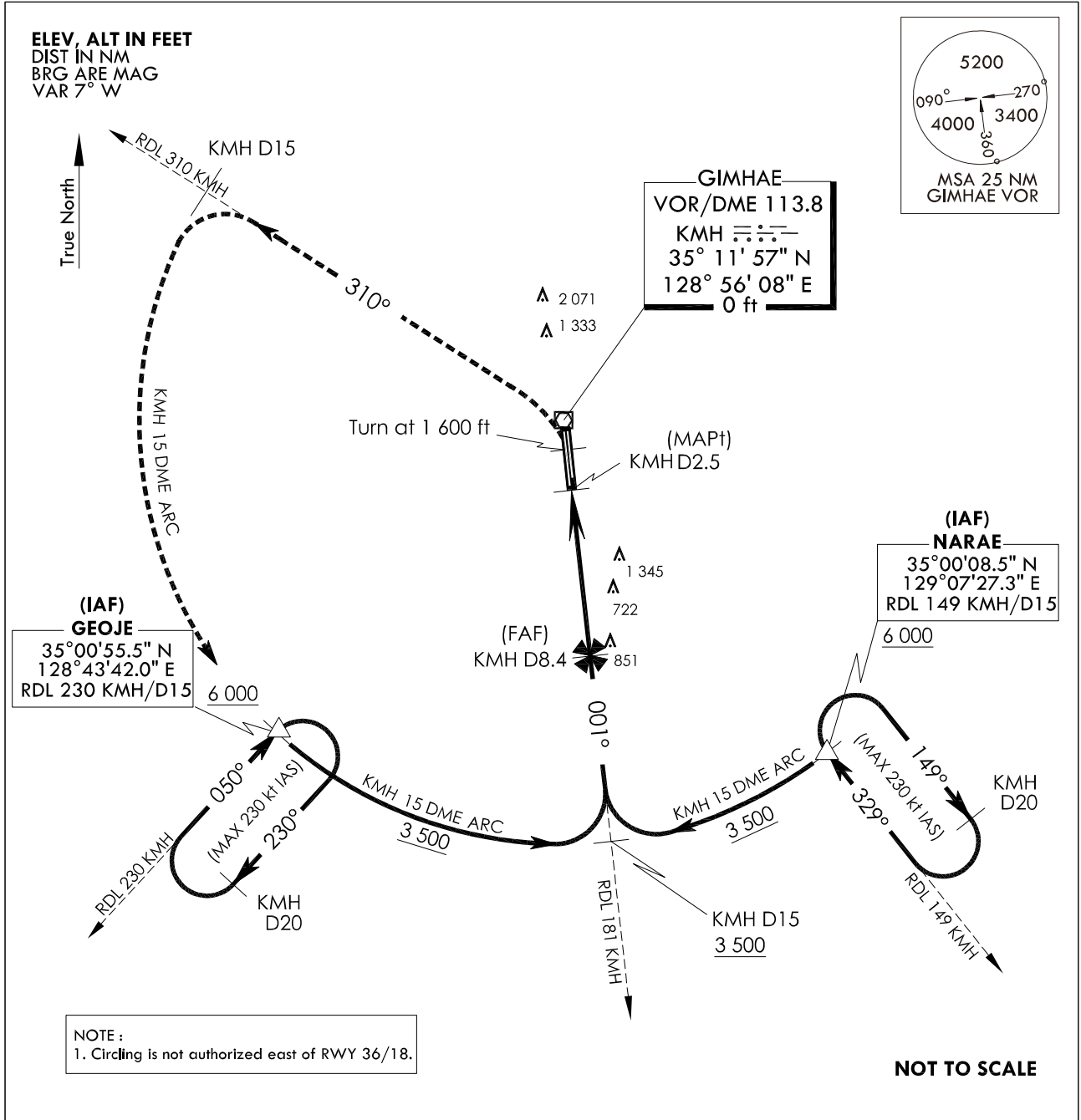
**INSTRUMENT
APPROACH
CHART**

AERODROME ELEV 13 ft
HEIGHTS RELATED TO
RWY 36L ELEV TDZ 13 ft

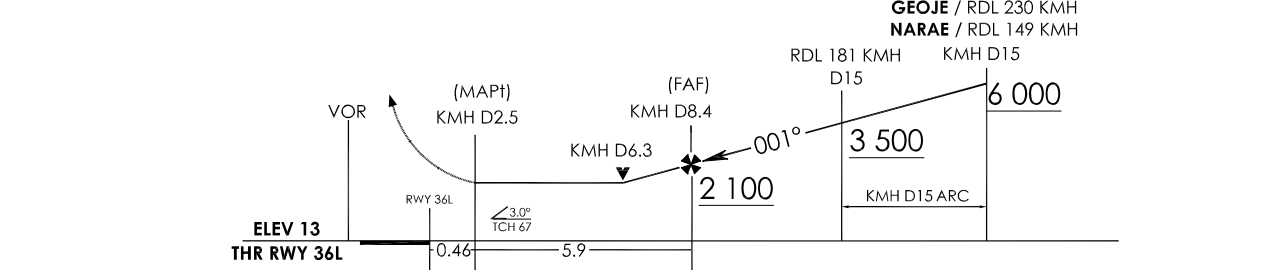
GIMHAE APP 125.5 364.0
GIMHAE TWR 118.1 118.45
233.3 236.6

BUSAN/Gimhae Intl(RKPK)
VOR/DME
RWY 36L

Note : Approach and circle to land under U.S. TERPS.



1 600	6 000	KMH D15	KMH D15	GEOJE	MISSED APPROACH : Climb to 1 600 ft then left turn climbing 6 000 ft on RDL 310 KM/D15 to 15 DME, then ARC KMH 15 DME to GEOJE and hold.	TRANSITION ALT 14 000 TRANSITION LVL FL 140
-------	-------	---------	---------	-------	--	--



CATEGORY	A	B	C	D
S-VOR 36L	FULL 1 460/40 1 448(1 500 - 3/4)	1 460/55 1 448(1 500 - 1)	1 460 - 3	1 448(1 500 - 3)
	ALS inop 1 460/60 1 448(1 500-1 1/4)	1 460-1 1/2 1 448(1 500-1 1/2)		
CIRCLING	1 460-1 1/4 1 447(1 500 - 1 1/4)	1 460-1 1/2 1 447(1 500 - 1 1/2)	1 460-3 1 447(1 500 - 3)	1 700-3 1 687(1 700 - 3)

Change : Information of holding direction.

INTENTIONALLY

LEFT

BLANK

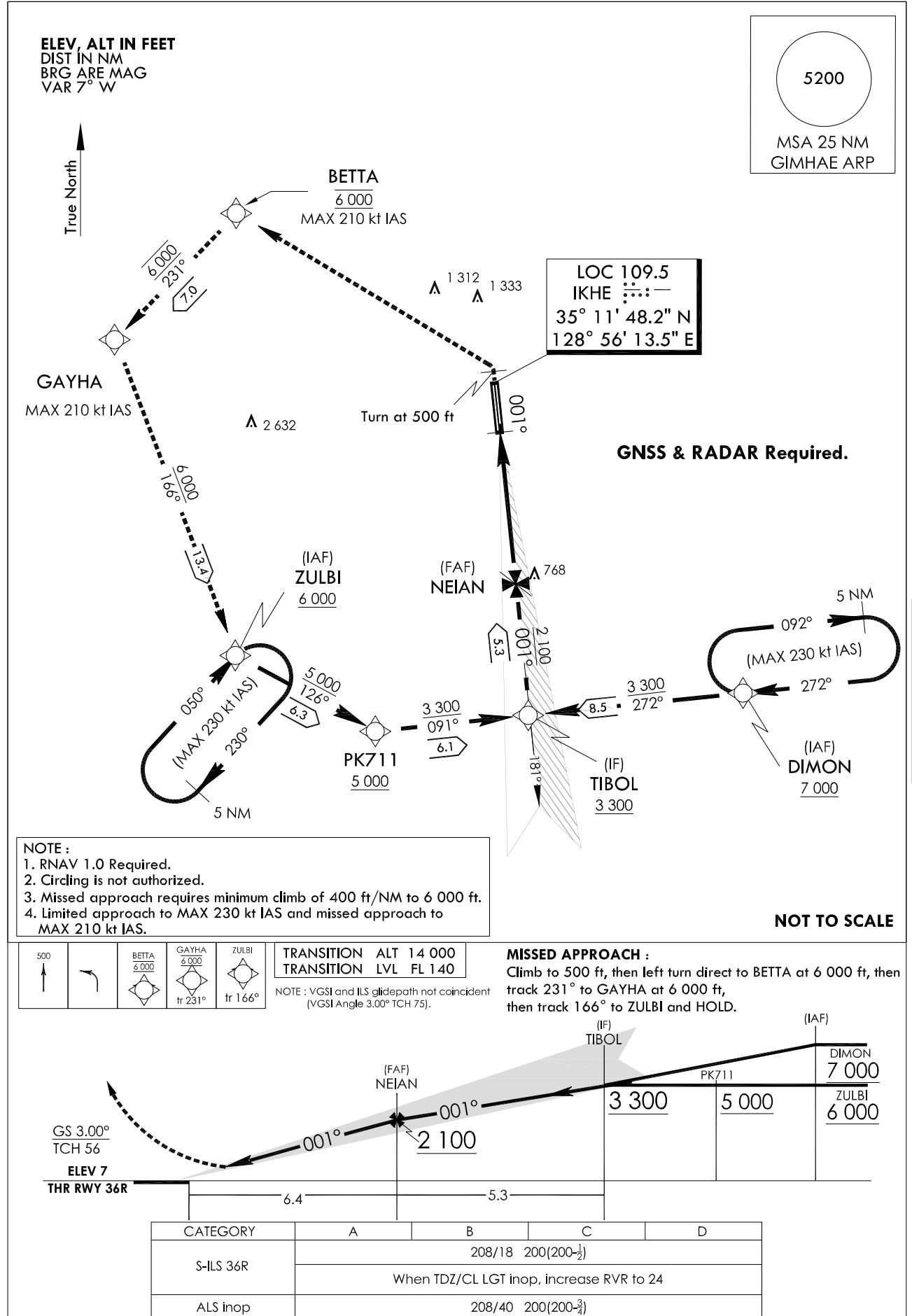
**INSTRUMENT
APPROACH
CHART**

AERODROME ELEV 13 ft
HEIGHTS RELATED TO
RWY 36R ELEV TDZ 8 ft

GIMHAE APP	125.5	364.0
GIMHAE TWR	118.1	118.45
	233.3	236.6

BUSAN/Gimhae Intl(RKPK)
ILS Z
RWY 36R

Note : Approach and circle to land under U.S. TERPS.



Change : Information of holding direction.

BUSAN/Gimhae INTL(RKPK)

ILS Z
RWY 36R

AERONAUTICAL DATA TABULATION

Instrument Approach Procedure Coding Tables

ILS Z Approach to RWY 36R from DIMON to TIBOL(IF)

Serial Number	Path Descriptor	Waypoint Identifier	Fly-over	Course/Track °M(°T)	Distance (NM)	Turn direction	Altitude (ft)	Speed (kt)	Coordinates	VPA/TCH	Navigation specification	Remarks
001	-	DIMON	-	-	-	-	+7 000	-230	345923.1 N 1290815.3 E	-	RNAV 1	IAF
002	TF	TIBOL	-	271.7(264.2)	8.5	-	+3 300	-230	345831.2 N 1285756.1 E	-	RNAV 1	IF

ILS Z Approach to RWY 36R from ZULBI to TIBOL(IF)

Serial Number	Path Descriptor	Waypoint Identifier	Fly-over	Course/Track °M(°T)	Distance (NM)	Turn direction	Altitude (ft)	Speed (kt)	Coordinates	VPA/TCH	Navigation specification	Remarks
001	-	ZULBI	-	-	-	-	+6 000	-230	350051.7 N 1284347.2 E	-	RNAV 1	IAF
002	TF	PK711	-	125.8(118.3)	6.3	-	+5 000	-230	345751.9 N 1285032.3 E	-	RNAV 1	SDF
002	TF	TIBOL	-	091.3(083.8)	6.1	-	+3 300	-230	345831.2 N 1285756.1 E	-	RNAV 1	IAF/IF

ILS Z Approach to RWY 36R from TIBOL(IF) to MAHF

Serial Number	Path Descriptor	Waypoint Identifier	Fly-over	Course/Track °M(°T)	Distance (NM)	Turn direction	Altitude (ft)	Speed (kt)	Coordinates	VPA/TCH	Navigation specification	Remarks
001	TF	TIBOL	-	-	-	-	+3 300	-230	345831.2 N 1285756.1 E	-	RNAV 1	IF
002	TF	NEIAN	-	001.4(354.0)	5.3	-	+2 100	-	350346.6 N 1285715.5 E	-	-	FAF
003	-	DA	-	001.4(354.0)	-	-	+208	-	-	-	LOC	DA
004	-	RWY 36R	-	001.4(354.0)	-	-	-	-	351010.10 N 1285626.14 E	3.0/56	LOC	-
005	DF	BETTA	-	-	-	L	@6 000	-210	351824.2 N 1284346.2 E	-	RNAV 1	CG 400 ft/NM to 6 000
006	TF	GAYHA	-	231.3(223.8)	7.0	-	@6 000	-210	351322.4 N 1283754.4 E	-	RNAV 1	-
007	TF	ZULBI	-	166.3(158.9)	13.4	-	+6 000	-230	350051.7 N 1284347.2 E	-	RNAV 1	-
008	HM	DIMON	-	271.7(264.2)	5.0	R	-8 000 +7 000	-230	345923.1 N 1290815.3 E	-	-	-
009	HM	ZULBI	-	050(042.5)	5.0	R	-10 000 +6 000	-230	350051.7 N 1284347.2 E	-	-	-

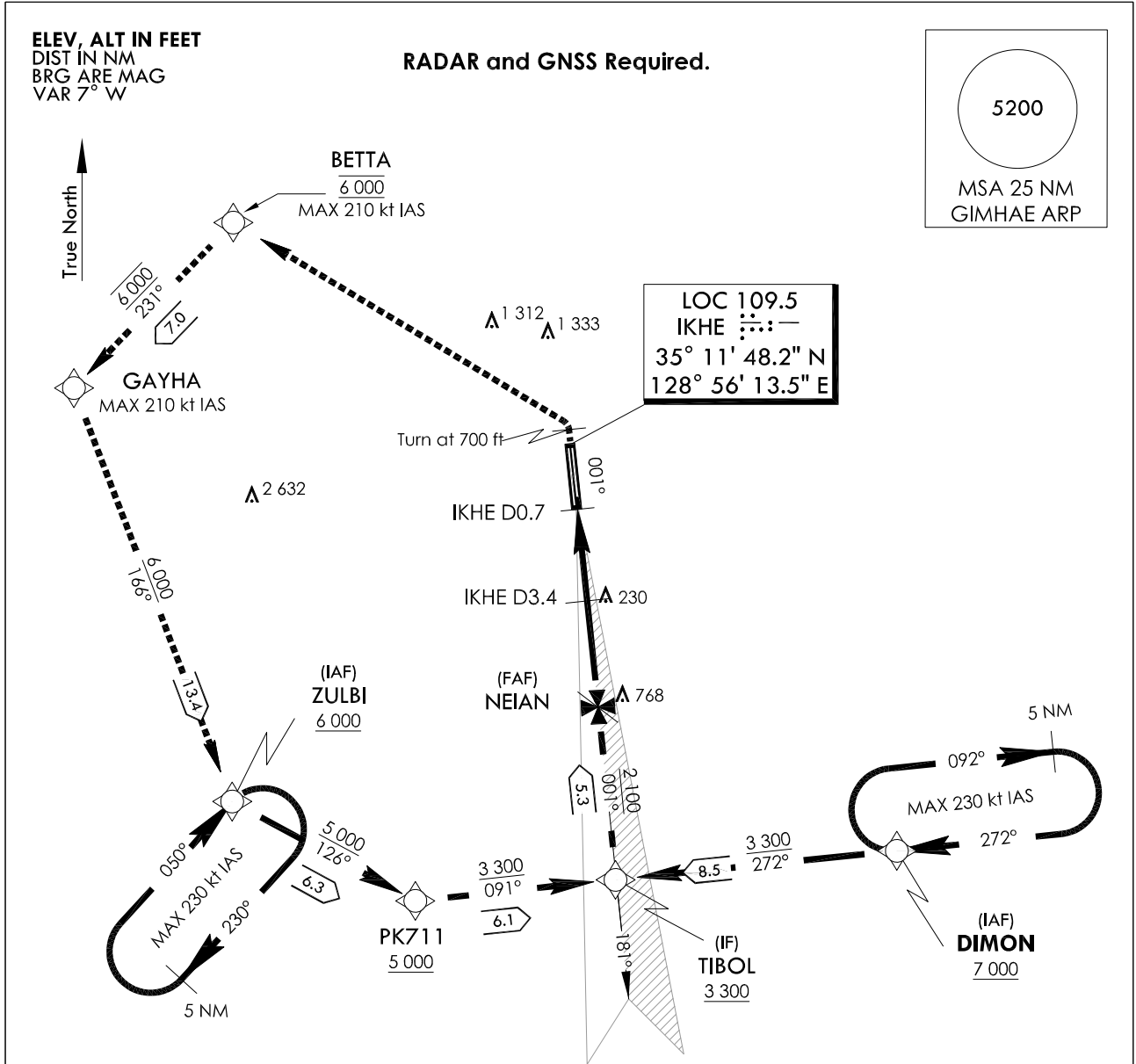
**INSTRUMENT
APPROACH
CHART**

AERODROME ELEV 13 ft
HEIGHTS RELATED TO
RWY 36R ELEV TDZ 8 ft

GIMHAE APP 125.5 364.0
GIMHAE TWR 118.1 118.45
233.3 236.6

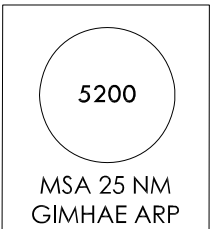
BUSAN/Gimhae Intl(RKPK)
LOC/DME Z
RWY 36R

Note : Approach and circle to land under U.S. TERPS.



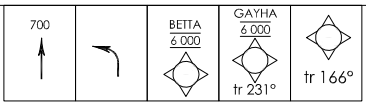
ELEV, ALT IN FEET
DIST IN NM
BRG ARE MAG
VAR 7° W

RADAR and GNSS Required.



LOC 109.5
IKHE
35° 11' 48.2" N
128° 56' 13.5" E

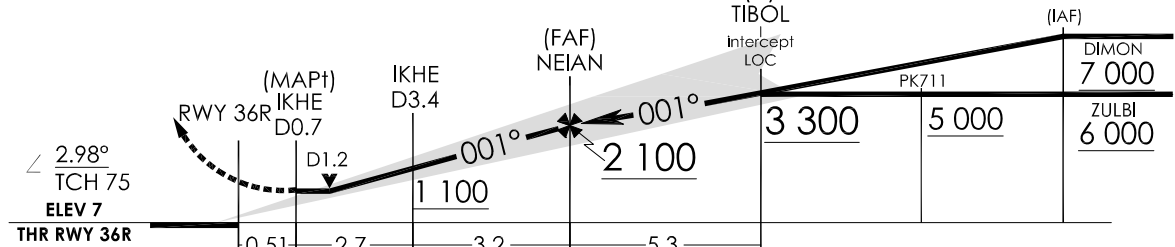
- NOTE :**
1. RNAV 1.0 Required.
 2. Circling is not authorized east of RWY 36/18.
 3. Missed approach requires minimum climb of 350 ft/NM to 6 000 ft.
 4. Limited approach to MAX 230 kt IAS and missed approach to MAX 210 kt IAS.



TRANSITION ALT 14 000
TRANSITION LVL FL 140

MISSED APPROACH :
Climb to 700 ft, then left turn direct to BETTA at 6 000 ft, then track 231° to GAYHA at 6 000 ft, then track 166° to ZULBI and HOLD.

NOTE : Use IKHE DME when on the localizer course.



CATEGORY		A	B	C	D
S-LOC 36R	FULL	420/24	413(500-½)	420/40	413(500-¾)
	ALS inop	420/55	413(500-1)	420/60	413(500-1 ½)
CIRCLING		520-1 507(600-1)	580-1 567(600-1)	1 360-3 1 347(1 400-3)	1 700-3 1 687(1 700-3)

Change : Information of holding direction.

BUSAN/Gimhae INTL(RKPK)
LOC/DME Z
RWY 36R

AERONAUTICAL DATA TABULATION

Instrument Approach Procedure Coding Tables

LOC/DME Z Approach to RWY 36R from DIMON to TIBOL(IF)

Serial Number	Path Descriptor	Waypoint Identifier	Fly-over	Course/Track °M(°T)	Distance (NM)	Turn direction	Altitude (ft)	Speed (kt)	Coordinates	VPA/TCH	Navigation specification	Remarks
001	-	DIMON	-	-	-	-	+7 000	-230	345923.1 N 1290815.3 E	-	RNAV 1	IAF
002	TF	TIBOL	-	271.7(264.2)	8.5	-	+3 300	-230	345831.2 N 1285756.1 E	-	RNAV 1	IF

LOC/DME Z Approach to RWY 36R from ZULBI to TIBOL(IF)

Serial Number	Path Descriptor	Waypoint Identifier	Fly-over	Course/Track °M(°T)	Distance (NM)	Turn direction	Altitude (ft)	Speed (kt)	Coordinates	VPA/TCH	Navigation specification	Remarks
001	-	ZULBI	-	-	-	-	+6 000	-230	350051.7 N 1284347.2 E	-	RNAV 1	IAF
002	TF	PK711	-	125.8(118.3)	6.3	-	+5 000	-230	345751.9 N 1285032.3 E	-	RNAV 1	SDF
002	TF	TIBOL	-	091.3(083.8)	6.1	-	+3 300	-230	345831.2 N 1285756.1 E	-	RNAV 1	IF

LOC/DME Z Approach to RWY 36R from TIBOL(IF) to MAHF

Serial Number	Path Descriptor	Waypoint Identifier	Fly-over	Course/Track °M(°T)	Distance (NM)	Turn direction	Altitude (ft)	Speed (kt)	Coordinates	VPA/TCH	Navigation specification	Remarks
001	TF	TIBOL	-	-	-	-	+3 300	-230	345831.2 N 1285756.1 E	-	RNAV 1	IF
002	TF	NEIAN	-	001.4(354.0)	5.3	-	+2 100	-	350346.6 N 1285715.5 E	-	LOC	FAF
003	-	IKHE 3.4D	-	001.4(354.0)	3.2	-	+1 100	-	350657.8 N 1285650.9 E	-	LOC	SDF
004	-	IKHE 0.7D	-	001.4(354.0)	2.7	-	+420	-	350939.4 N 1285630.1 E	-	LOC	MAPT
005	-	RWY 36R	-	001.4(354.0)	0.51	-	-	-	351010.10 N 1285626.14 E	3.0/56	LOC	-
006	DF	BETTA	-	-	-	L	@6 000	-210	351824.2 N 1284346.2 E	-	RNAV 1	CG 350 ft/NM to 6 000
007	TF	GAYHA	-	231.3(233.8)	7.0	-	@6 000	-210	351322.4 N 1283754.4 E	-	RNAV 1	-
008	TF	ZULBI	-	166.3(158.9)	13.4	-	+6 000	-230	350051.7 N 1284347.2 E	-	RNAV 1	-
009	HM	DIMON	-	271.7(264.2)	5.0	R	-8 000 +7 000	-230	345923.1 N 1290815.3 E	-	-	-
010	HM	ZULBI	-	050(042.5)	5.0	R	-10 000 +6 000	-230	350051.7 N 1284347.2 E	-	-	-

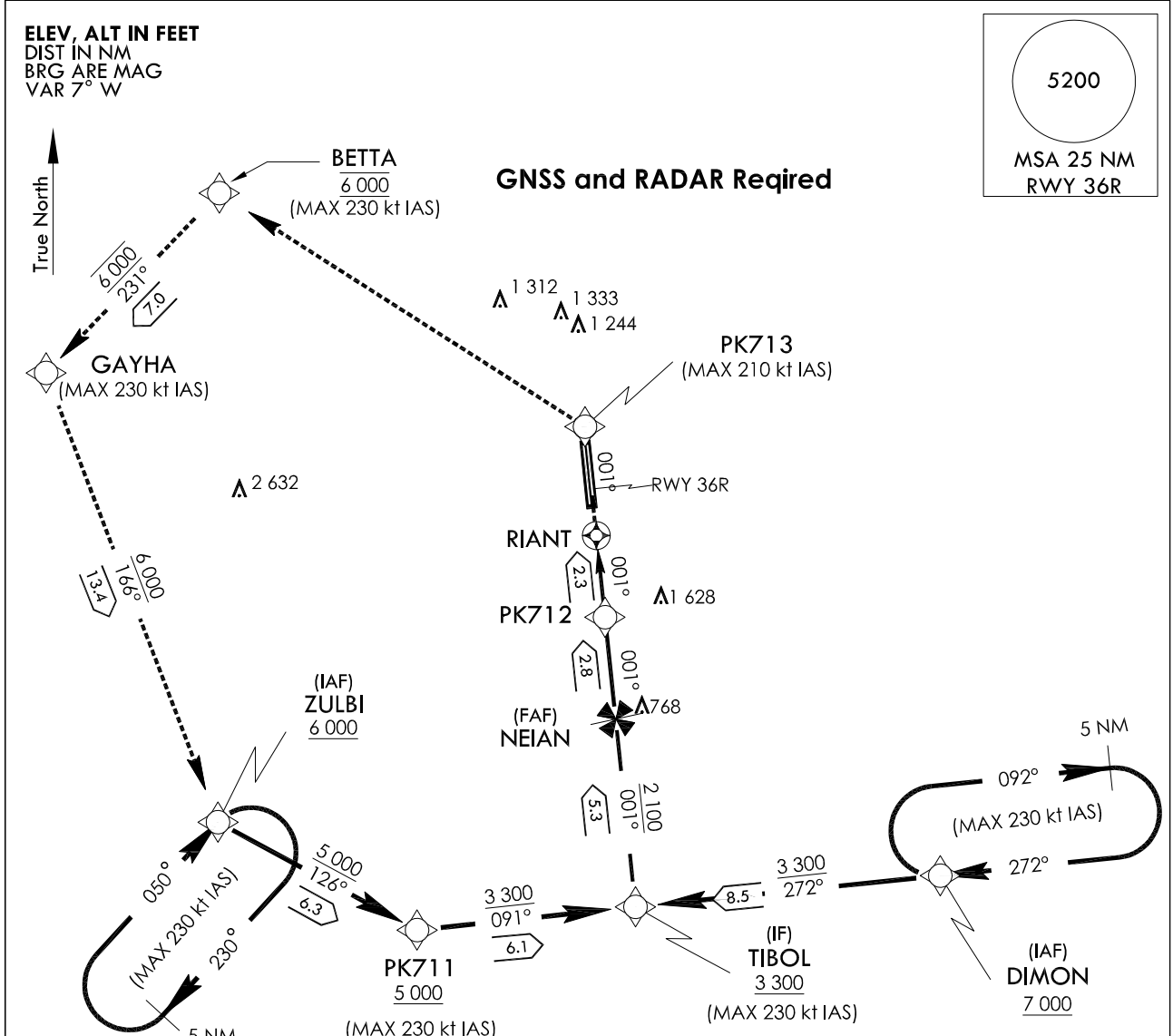
**INSTRUMENT
APPROACH
CHART**

AERODROME ELEV 13 ft
HEIGHTS RELATED TO
RWY 36R ELEV TDZ 13 ft

GIMHAE APP 125.5 364.0
GIMHAE TWR 118.1 118.45
233.3 236.6

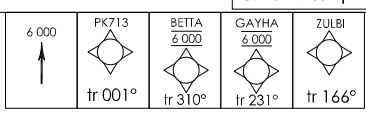
BUSAN/Gimhae Int'l(RKPK)
RNAV(GNSS)
RWY 36R

Note : Approach and circle to land under U.S. TERPS.



- NOTE :**
1. RNP 0.3 Required.
 2. DME/DME RNP 0.3 N/A.
 3. Missed approach requires minimum climb of 330 ft/NM to 6 000 ft.
 4. Limit initial and missed approach to MAX 230 kt IAS.
 5. Limit PK713 to MAX 210 kt IAS.
 6. Bank angle used 23 degrees : PK713, BETTA
 7. Circling is not authorized east of RWY 36/18.
 8. For uncompensated Baro-VNAV system, LNAV/VNAV N/A below -18°C(0°F) or above 54°C(130°F).

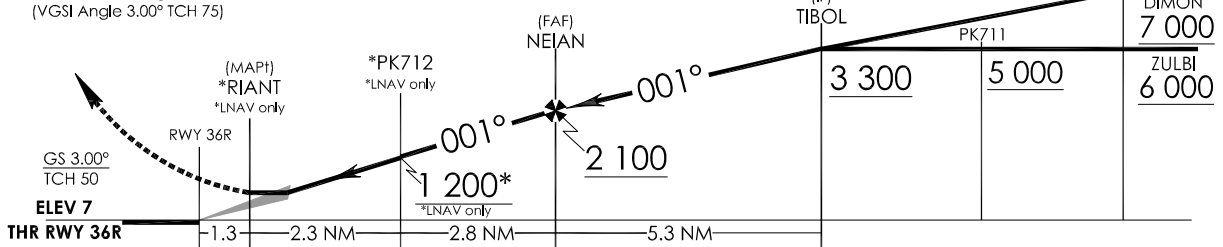
NOT TO SCALE



TRANSITION ALT	14 000
TRANSITION LVL	FL 140

MISSED APPROACH :
Climb to 6 000 on track 001° to PK713, then track 310° to BETTA, then track 231° to GAYHA, then track 166° to ZULBI and hold (IAF)

Note : VGSI and RNAV glidepath not coincident (VGSI Angle 3.00° TCH 75)



CATEGORY		A		B		C		D	
		1	2	1	2	1	2	1	2
LNAV /VNAV	FULL			420/55	413(500-1)				
	ALS inop			420/60	413(500-1 1/4)				
LNAV	FULL			600-1 1/2	593(600-1 1/2)				
	ALS inop			600-1 7/8	593(600-1 7/8)				
CIRCLING				600-1 7/8 587(600-1 7/8)		1 360-3	1 347(1 400-3)	1 700-3	1 687(1 700-3)

Change : Information of holding direction.

BUSAN/Gimhae INTL(RKPK)
RNAV(GNSS)
RWY 36L

AERONAUTICAL DATA TABULATION

Instrument Approach Procedure Coding Tables

RNAV(GNSS) RWY 36R - via DIMON to TIBOL(IF)

Serial Number	Path Descriptor	Waypoint Identifier	Fly-over	Course/Track °M(°T)	Distance (NM)	Turn direction	Altitude (ft)	Speed (kt)	Coordinates	VPA/TCH	Navigation specification	Remarks
001	-	DIMON	-	-	-	-	+7 000	-230	345923.1 N 1290815.3 E	-	RNP APCH	IAF
002	TF	TIBOL	-	271.7(264.2)	8.5	-	+3 300	-230	345831.2 N 1285756.1 E	-	RNP APCH	IF

RNAV(GNSS) RWY 36R - via ZULBI to TIBOL(IF)

Serial Number	Path Descriptor	Waypoint Identifier	Fly-over	Course/Track °M(°T)	Distance (NM)	Turn direction	Altitude (ft)	Speed (kt)	Coordinates	VPA/TCH	Navigation specification	Remarks
001	-	ZULBI	-	-	-	-	+6 000	-230	350051.7 N 1284347.2 E	-	RNP APCH	IAF
002	TF	PK711	-	125.8(118.3)	6.3	-	+5 000	-230	345751.9 N 1285032.3 E	-	RNP APCH	SDF
002	TF	TIBOL	-	091.3(083.8)	6.1	-	+3 300	-230	345831.2 N 1285756.1 E	-	RNP APCH	IF

RNAV(GNSS) RWY 36R - via TIBOL(IF) to MAHF

Serial Number	Path Descriptor	Waypoint Identifier	Fly-over	Course/Track °M(°T)	Distance (NM)	Turn direction	Altitude (ft)	Speed (kt)	Coordinates	VPA/TCH	Navigation specification	Remarks
001	TF	TIBOL	-	-	-	-	+3 300	-230	345831.2 N 1285756.1 E	-	RNP APCH	IF
002	TF	NEIAN	-	001.4(354.0)	5.3	-	+2 100	-	350346.6 N 1285715.5 E	-	RNP APCH	FAF
003	TF	PK712	-	001.4(354.0)	2.8	-	+1 200	-	350635.6 N 1285653.8 E	-	RNP APCH	SDF
004	TF	RIANT	Y	001.4(354.0)	2.3	-	+600	-	350852.4 N 1285636.2 E	-	RNP APCH	MAPI
005	TF	PK713	-	001.4(354.0)	3.1	-	-	-210	351154.5 N 1285612.8 E	-	RNP APCH	CG 330 ft/NM to 6 000
006	TF	BETTA	-	310.0(302.5)	12.1	-	-	-230	351824.2 N 1284346.2 E	-	RNP APCH	CG 330 ft/NM to 6 000
007	TF	GAYHA	-	231.2(223.8)	7.0	-	-	-230	351322.4 N 1283754.4 E	-	RNP APCH	CG 330 ft/NM to 6 000
008	TF	ZULBI	-	166.3(158.9)	13.4	-	+6 000	-230	350051.7 N 1284347.2 E	-	RNP APCH	-
009	HM	DIMON	-	271.7(264.2)	5.0	R	-8 000 +7 000	-230	345923.1 N 1290815.3 E	-	-	-
010	HM	ZULBI	-	050(042.5)	5.0	R	-10 000 +6 000	-230	350051.7 N 1284347.2 E	-	-	-

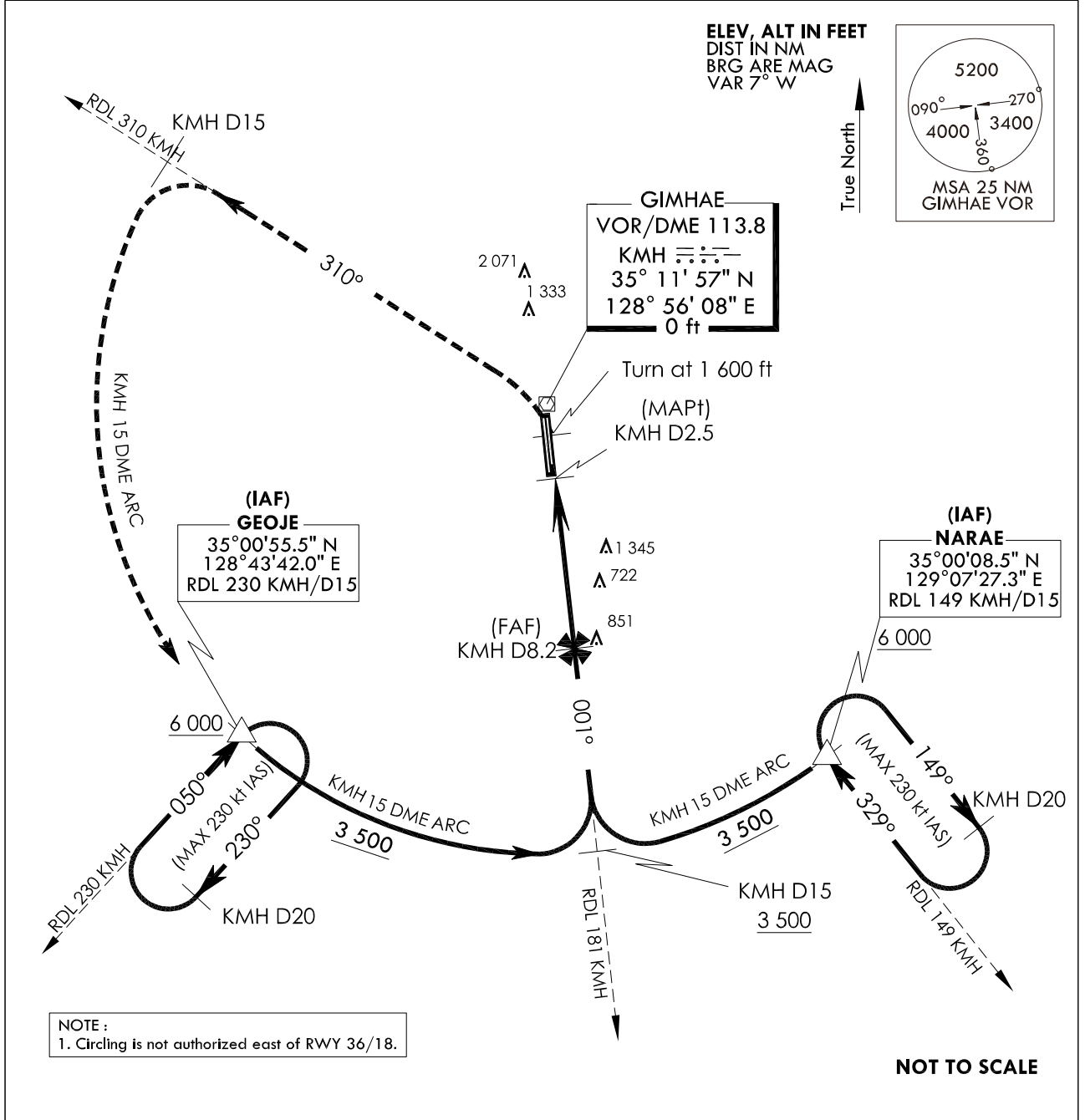
**INSTRUMENT
APPROACH
CHART**

AERODROME ELEV 13 ft
HEIGHTS RELATED TO
RWY 36R ELEV TDZ 8 ft

GIMHAE APP	125.5	364.0
GIMHAE TWR	118.1	118.45
	233.3	236.6

BUSAN/Gimhae Intl(RKPK)
VOR/DME
RWY 36R

Note : Approach and circle to land under U.S. TERPS.



1 600	6 000	KMH D15	KMH D15	GEOJE	TRANSITION ALT 14 000	(IAF) GEOJE / RDL 230 KMH
↑	RDL 310 KMH	RDL 310 KMH	KMH D15 ARC	△	TRANSITION LVL FL 140	NARAE / RDL 149 KMH

MISSED APPROACH :
Climb to 1 600 ft then left turn climbing 6 000 ft on RDL 310 KMH to 15 DME, then arc KMH 15 DME to GEOJE and hold.

ELEV 7 THR RWY 36R	RWY 36R	VOR	(MAPt) KMH D2.5	(FAF) KMH D8.2	RDL 181 KMH D15	KMH D15	6 000	3 500	KMH D15 ARC

CATEGORY	A		B		C	D
	FULL	ALS inop	FULL	ALS inop		
S-VOR 36R	1 460/40	1 453(1 500 - 3/4)	1 460/55	1 453(1 500 - 1)	1 460 - 3	1 453(1 500 - 3)
☑ CIRCLING	1 460 - 1 1/4	1 447(1 500 - 1 1/4)	1 460 - 1 1/2	1 447(1 500 - 1 1/2)	1 460 - 3	1 687(1 700 - 3)

Change : Information of holding direction.

INTENTIONALLY

LEFT

BLANK