

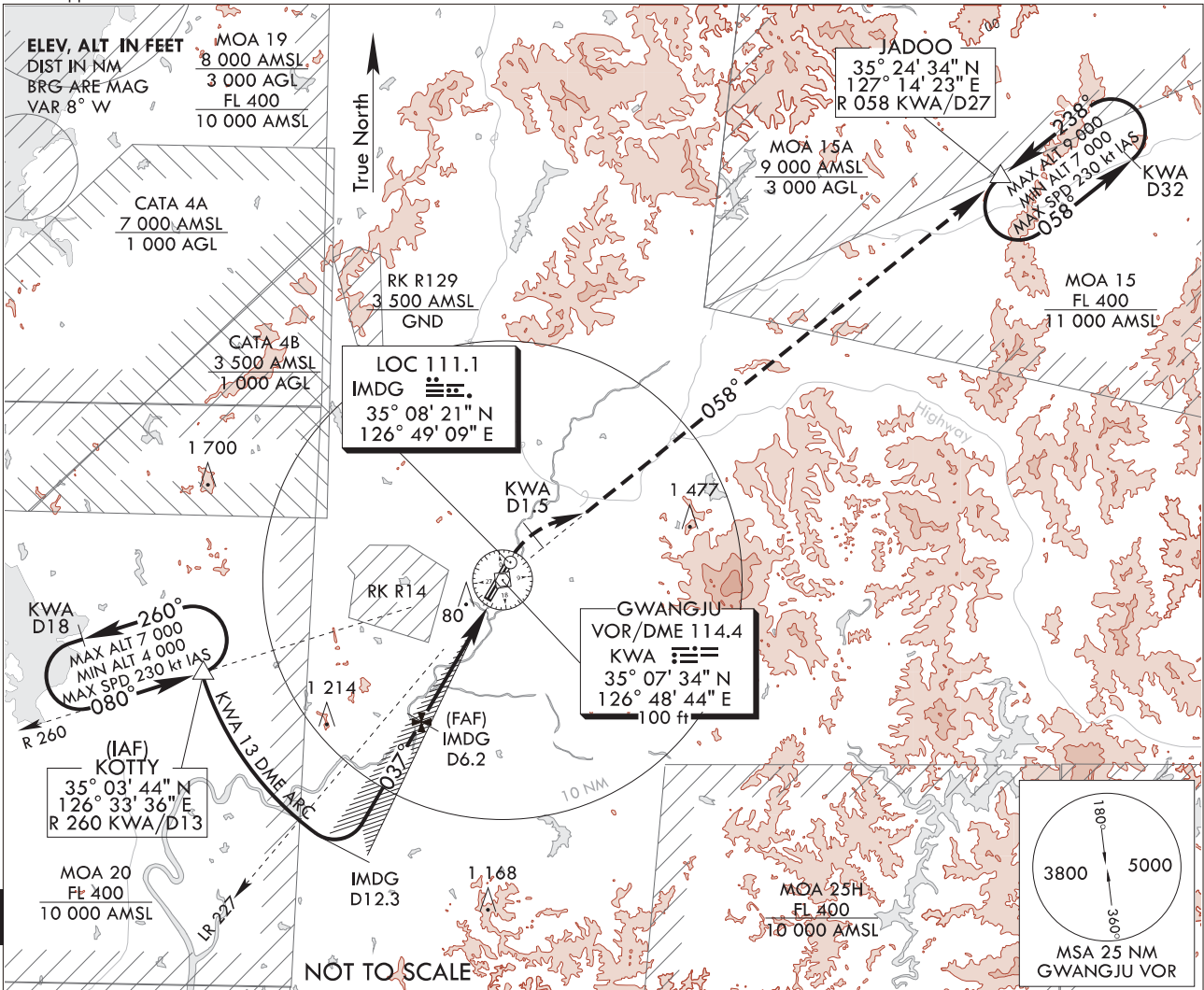
**INSTRUMENT**  
**APPROACH**  
**CHART**

**AERODROME ELEV 48 ft**  
 HEIGHTS RELATE TO  
 THR RWY 04R - ELEV 43 ft  
 HIGHEST ELEV TDZ 45 ft

GWANGJU APP	130.0
	228.9
GWANGJU TWR	118.05
	254.6

**GWANGJU/Gwangju(RKJJ)**  
**ILS/DME**  
**RWY 04R**

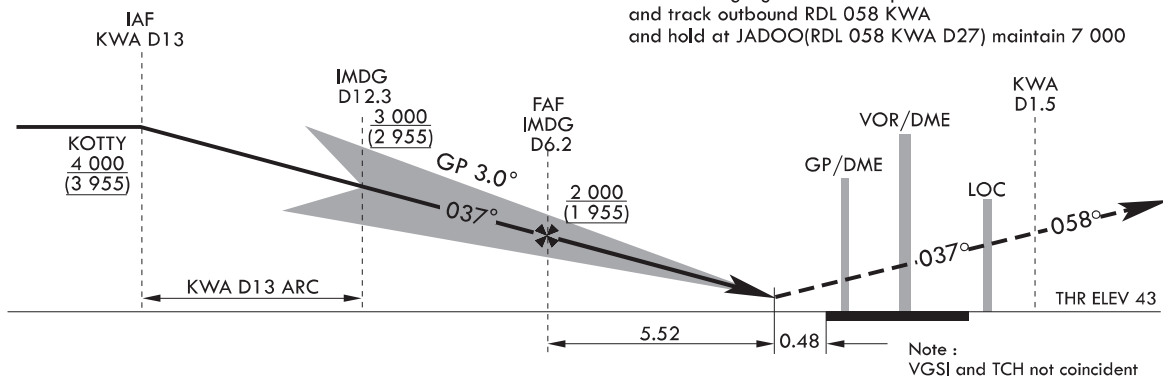
Note : Approach and circle to land under U.S. TERPS.



TRANSITION ALT 14 000  
 TRANSITION LVL FL 140

**MISSED APPROACH**

Climb heading 037 to KWA 1.5D, then climbing right turn intercept RDL 058 KWA and track outbound RDL 058 KWA and hold at JADOO(RDL 058 KWA D27) maintain 7 000



CATEGORY	A	B	C	D
S-ILS	245/730 m 200 (200-800 m)			
S-ILS (ALS inop)	245/1 220 m 200 (200-1 200 m)			

Change : Amended lead radial.

**INTENTIONALLY**

**LEFT**

**BLANK**

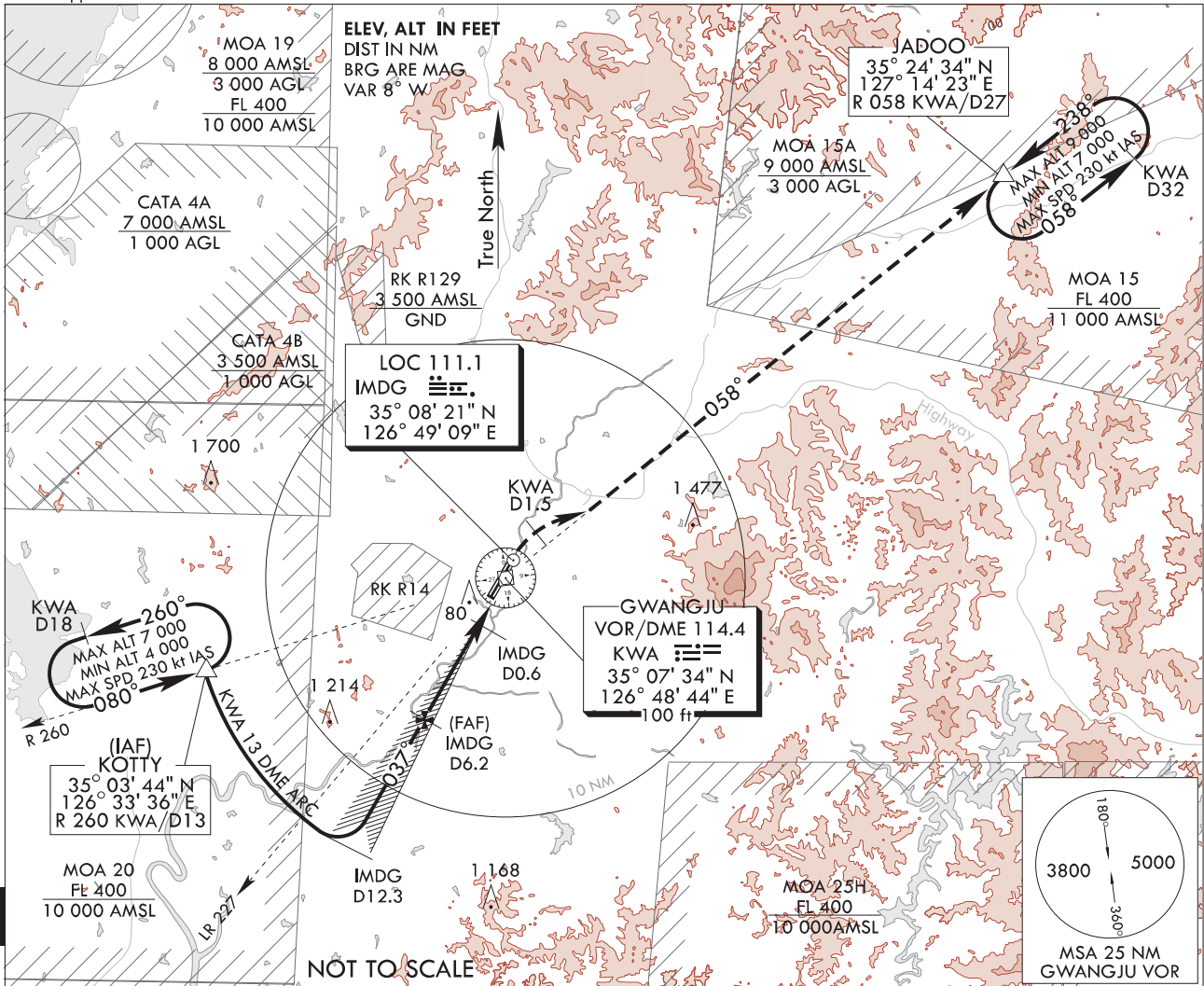
**INSTRUMENT  
APPROACH  
CHART**

**AERODROME ELEV 48 ft**  
HEIGHTS RELATE TO  
THR RWY 04R - ELEV 43 ft  
HIGHEST ELEV TDZ 45 ft

GWANGJU APP	130.0
	228.9
GWANGJU TWR	118.05
	254.6

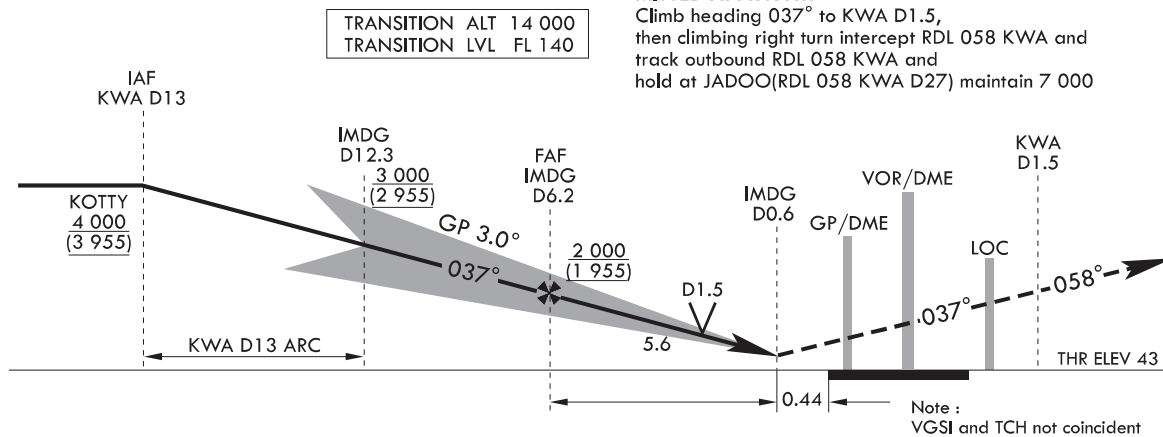
**GWANGJU/Gwangju(RKJJ)**  
**LOC/DME**  
**RWY 04R**

Note : Approach and circle to land under U.S. TERPS.



**MISSED APPROACH**

Climb heading 037° to KWA D1.5, then climbing right turn intercept RDL 058 KWA and track outbound RDL 058 KWA and hold at JADOO(RDL 058 KWA/D27) maintain 7 000



CATEGORY	A	B	C	D
S-LOC/DME	520/1 220 m 475(500-1 200 m)			520/1 520 m 475(500-1 600 m)
S-LOC/DME (ALS INOP)	520/1 520 m 475(500-1 600 m)		520/1 830 m 475(500-2 000 m)	520-2 400 m 475(500-2 400m)
*CIRCLING	780-1 600 m 732(800-1 600 m)	900-2 000 m 852(900-2 000 m)	940-4 400 m 892(900-4 400 m)	1080-4800m 1 032(1 100-4 800m)

Change : Amended lead radial and information of VDP.

**INTENTIONALLY**

**LEFT**

**BLANK**

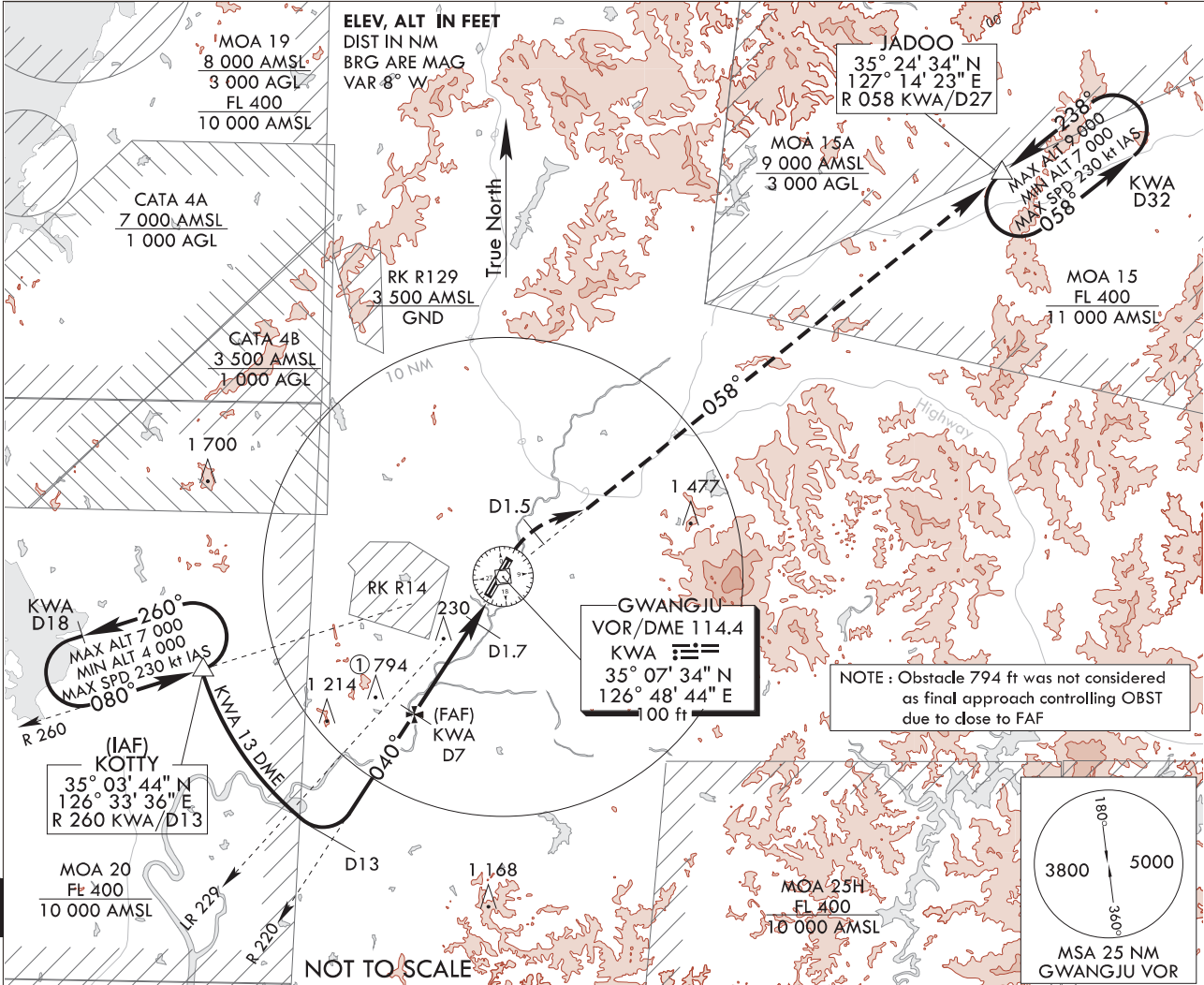
**INSTRUMENT  
APPROACH  
CHART**

**AERODROME ELEV 48 ft**  
HEIGHTS RELATE TO  
THR RWY 04R - ELEV 43 ft  
HIGHEST ELEV TDZ 45 ft

GWANGJU APP	130.0
GWANGJU TWR	228.9
	118.05
	254.6

**GWANGJU/Gwangju(RKJJ)**  
**VOR/DME**  
**RWY 04R**

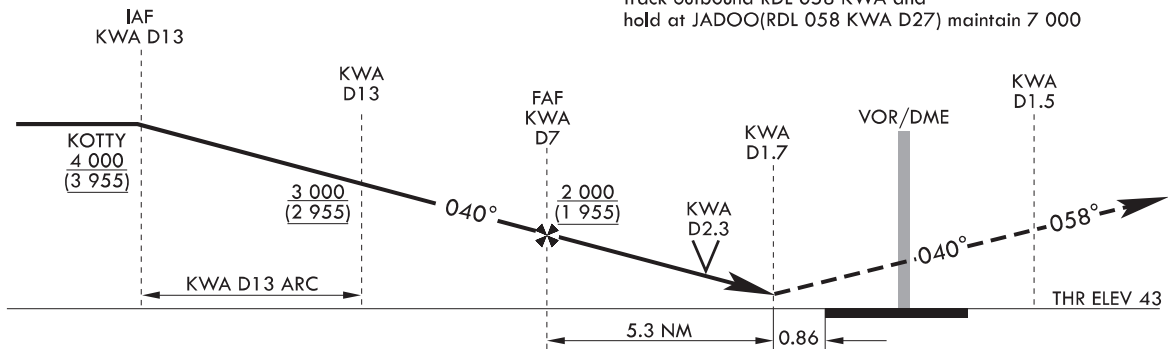
Note : Approach and circle to land under U.S. TERPS.



TRANSITION ALT 14 000  
TRANSITION LVL FL 140

**MISSED APPROACH**

Climb heading 040 to KWA D1.5, then climbing right turn intercept RDL 058 KWA and track outbound RDL 058 KWA and hold at JADOO(RDL 058 KWA D27) maintain 7 000



CATEGORY	A	B	C	D
S-VOR 04R	560/1 220 m 515(600-1 200 m)		560/1 520m 515(600-1 600 m)	560/1 830 m 515(600-2 000 m)
S-VOR 04R (ALS INOP)	560-1 600 m 515(600-1 600 m)		560-2 400 m 515(600-2 400 m)	560-2 800 m 515(600-2 800 m)
*CIRCLING	780-1 600 m 732(800-1 600 m)	900-2 000 m 852(900-2 000 m)	940-4 400 m 892(900-4 400 m)	1 080-4 800 m 1 032(1 100-4 800 m)

Change : Amended lead radial.

**INTENTIONALLY**

**LEFT**

**BLANK**

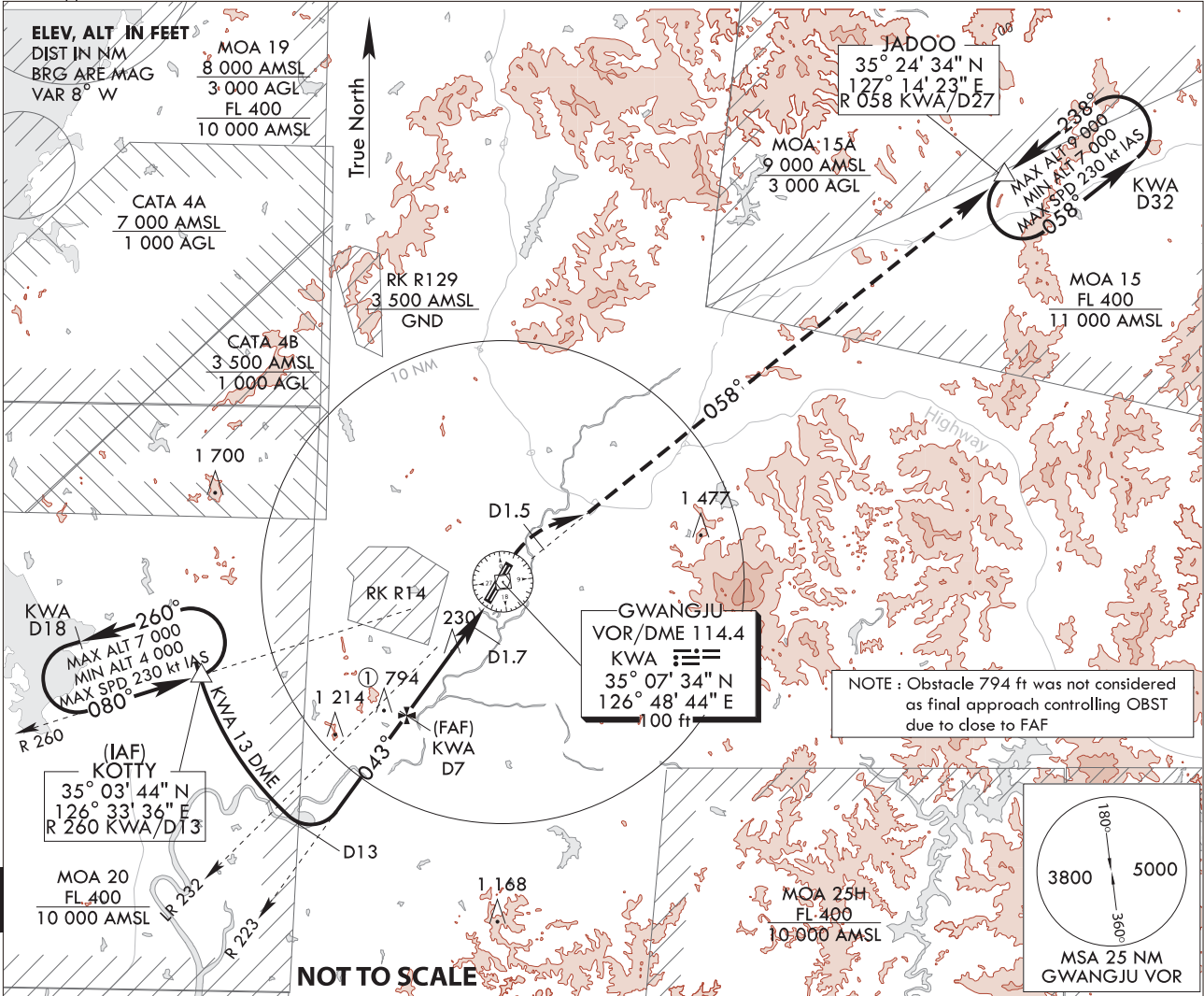
**INSTRUMENT  
 APPROACH  
 CHART**

**AERODROME ELEV 48 ft**  
 HEIGHTS RELATE TO  
 THR RWY 04L - ELEV 44 ft  
 HIGHEST ELEV TDZ 45 ft

GWANGJU APP 130.0  
 228.9  
 GWANGJU TWR 118.05  
 254.6

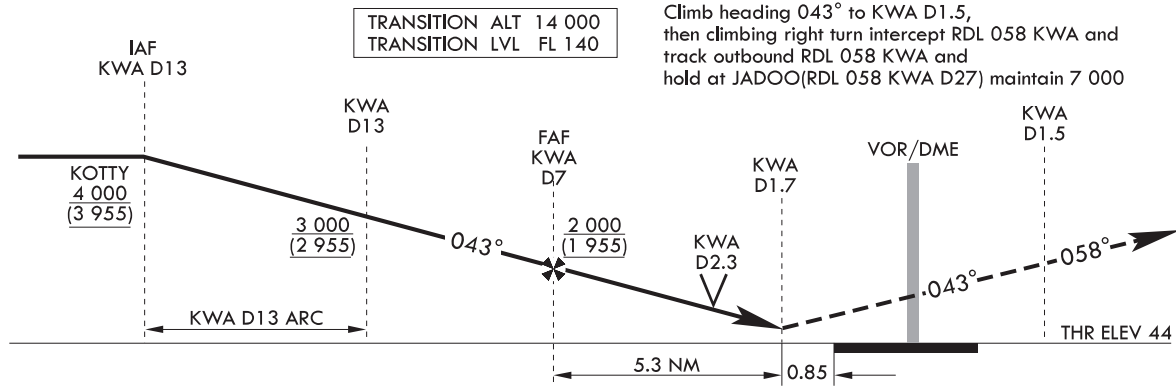
**GWANGJU/Gwangju(RKJJ)**  
**VOR/DME**  
**RWY 04L**

Note : Approach and circle to land under U.S. TERPS.



**MISSED APPROACH**

Climb heading 043° to KWA D1.5, then climbing right turn intercept RDL 058 KWA and track outbound RDL 058 KWA and hold at JADOO(RDL 058 KWA D27) maintain 7 000



CATEGORY	A	B	C	D
S-VOR 04L	560/1 220 m 515(600-1 200 m)		560/1 520 m 515(600-1 600 m)	560/1 830 m 515(600-2 000 m)
S-VOR 04L (ALS INOP)	560-1 600 m 515(600-1 600 m)		560-2 400 m 515(600-2 400 m)	560-2 800 m 515(600-2 800 m)
*CIRCLING	780-1 600 m 732(800-1 600 m)	900-2 000 m 852(900-2 000 m)	940-4 400 m 892(900-4 400 m)	1 080-4 800 m 1 032(1 100-4 800 m)

Change : Amended lead radial.

**INTENTIONALLY**

**LEFT**

**BLANK**