

STANDARD ARRIVAL CHART
INSTRUMENT(STAR) - ICAO

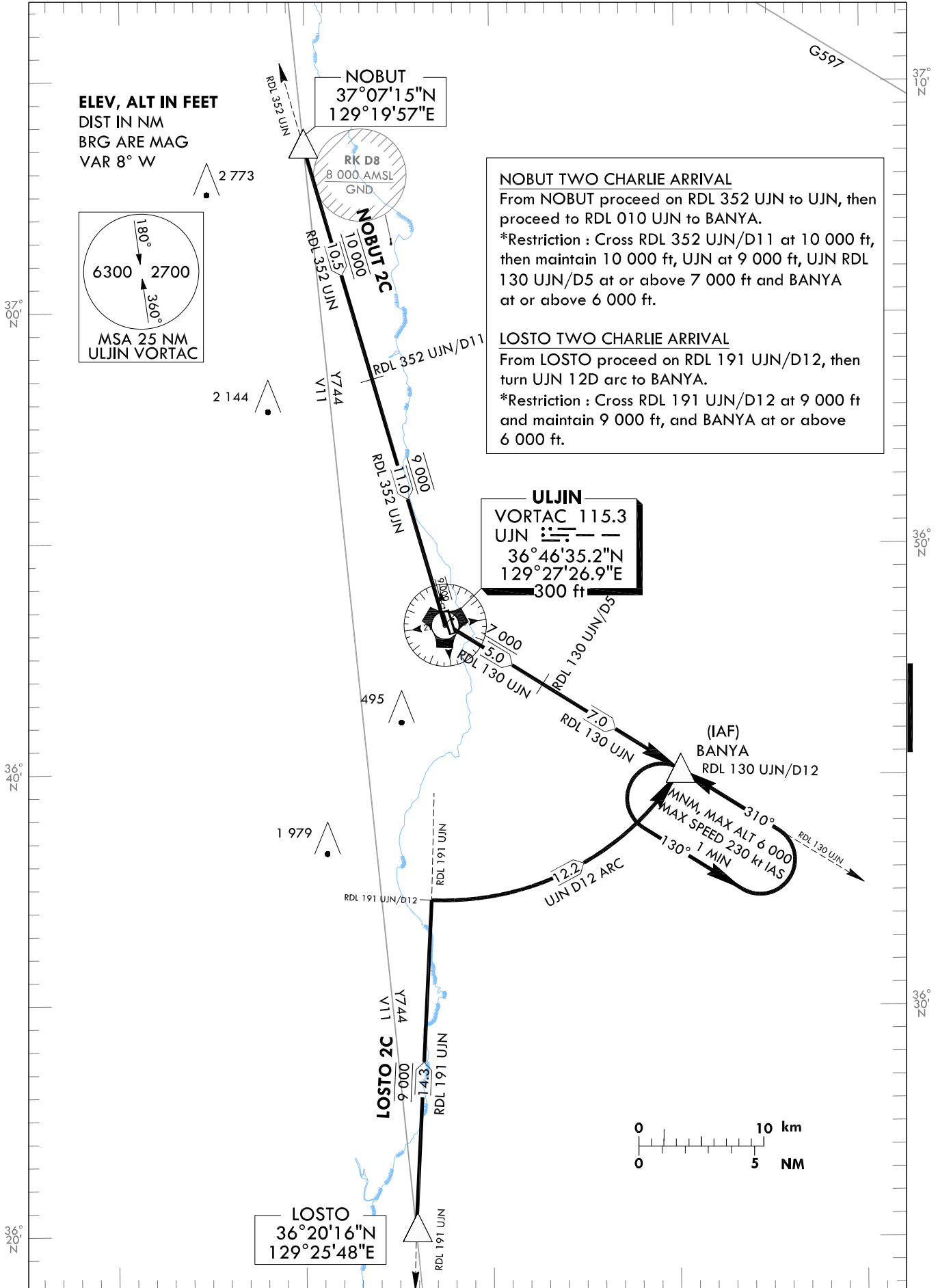
TRANSITION ALT 14 000
TRANSITION LVL FL 140

POHANG APP 122.550
317.65
ULJIN TWR 118.55
317.45

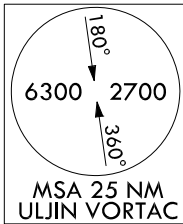
ULJIN/ULjin(RKTL)
RWY 35
NOBUT 2C
LOSTO 2C

Note : Arrival under ICAO flight Procedures.

129°30'E



ELEV, ALT IN FEET
DIST IN NM
BRG ARE MAG
VAR 8° W



NOBUT TWO CHARLIE ARRIVAL
From NOBUT proceed on RDL 352 UJN to UJN, then proceed to RDL 010 UJN to BANYA.
*Restriction : Cross RDL 352 UJN/D11 at 10 000 ft, then maintain 10 000 ft, UJN at 9 000 ft, UJN RDL 130 UJN/D5 at or above 7 000 ft and BANYA at or above 6 000 ft.

LOSTO TWO CHARLIE ARRIVAL
From LOSTO proceed on RDL 191 UJN/D12, then turn UJN 12D arc to BANYA.
*Restriction : Cross RDL 191 UJN/D12 at 9 000 ft and maintain 9 000 ft, and BANYA at or above 6 000 ft.

ULJIN
VORTAC 115.3
UJN
36°46'35.2"N
129°27'26.9"E
300 ft



Change : Information of bearing.

129°20'E

129°40'E