

**INSTRUMENT
APPROACH
CHART - ICAO**

AERODROME ELEV 175 ft
HEIGHTS RELATED TO
THR RWY 17 - ELEV 175 ft

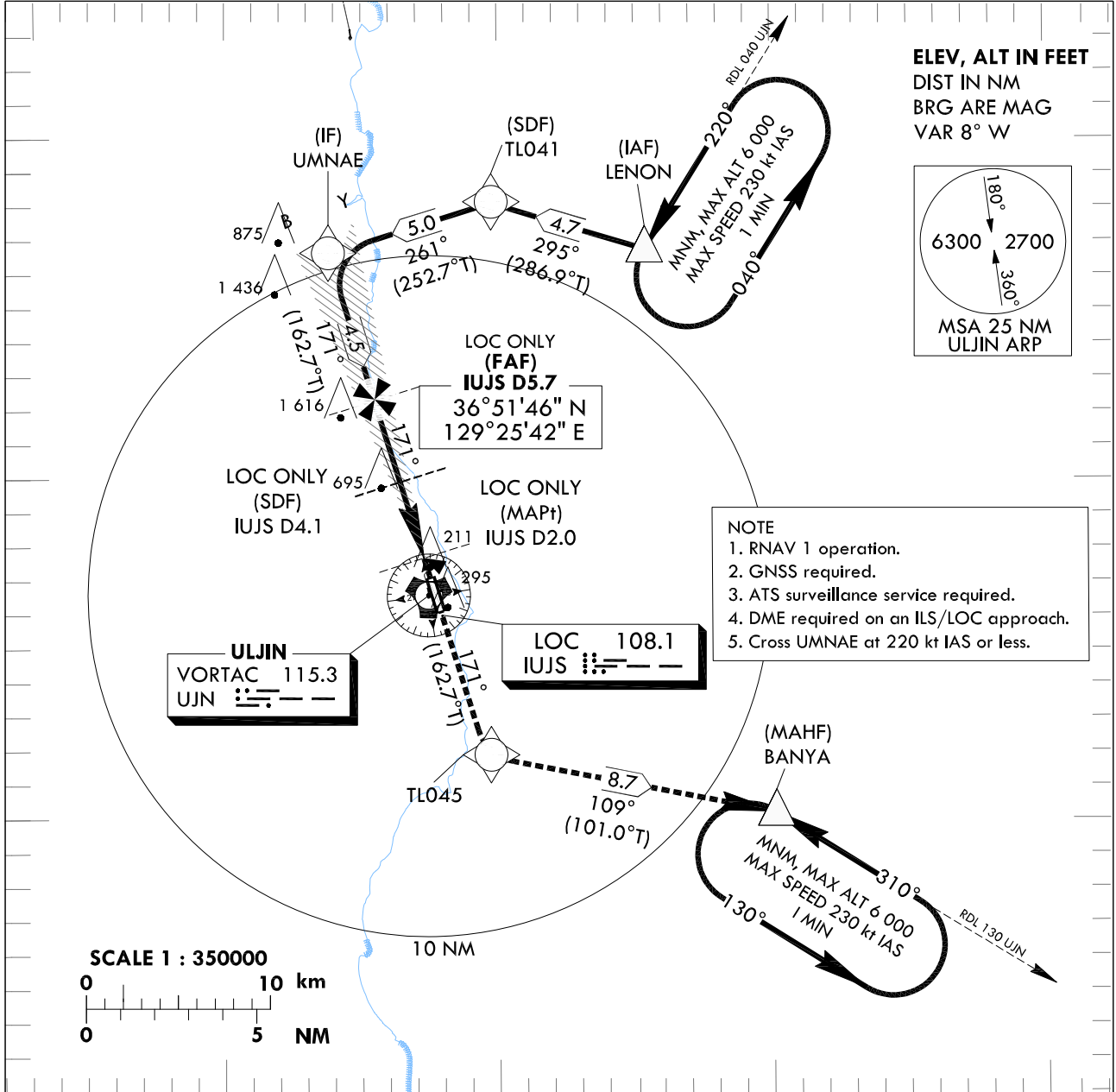
POHANG DEP 122.550
317.65
ULJIN TWR 118.55
317.45

ULJIN/ULjin(RKTL)

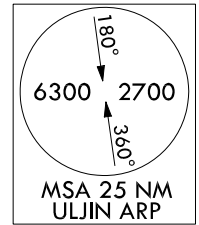
ILS or LOC Z RWY 17

Note : Approach under ICAO Flight Procedures.

129°30'E



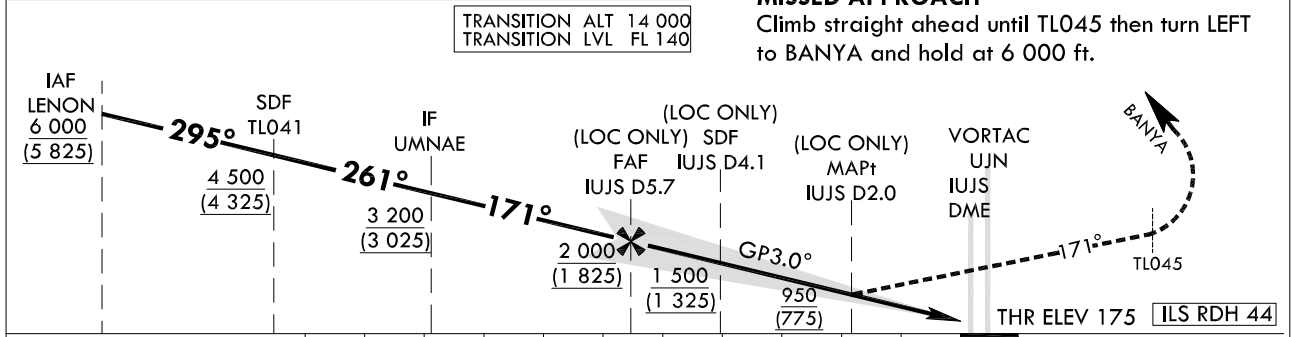
ELEV, ALT IN FEET
DIST IN NM
BRG ARE MAG
VAR 8° W



- NOTE**
1. RNAV 1 operation.
 2. GNSS required.
 3. ATS surveillance service required.
 4. DME required on an ILS/LOC approach.
 5. Cross UMNAE at 220 kt IAS or less.

RECOMMENDED PROFILE(LOC ONLY)	DME IUJS	5	4	3	2
Final Approach Gradient 5.31%, 323 ft/NM	ALT(HGT)	1 777 (1 602)	1 455 (1 280)	1 132 (957)	810 (635)

MISSED APPROACH
Climb straight ahead until TLO45 then turn LEFT to BANYA and hold at 6 000 ft.



NM FROM THR RWY 17	11 NM	5 NM	2 NM	THR RWY 17
--------------------	-------	------	------	------------

CATEGORY	DA(H)/MDA(H)	A				B				C				D				
		800 m				1 200 m				3 200 m				3 600 m				
CAT-1	FULL	375	800 m				1 200 m				3 200 m				3 600 m			
	ALS INOP	(200)	800 m				1 200 m				3 200 m				3 600 m			
LOC	FULL	950	800 m				1 200 m				3 200 m				3 600 m			
	ALS INOP	(775)	800 m				1 200 m				3 200 m				3 600 m			

Rate of descent	Knots	60	90	120	150	180
	V/V fpm	323	485	646	808	970

Timing NOT authorized for defining the MAPt
*Circling not authorized

Change : Information of obstacle height.

ULJIN / Ujin(RKTL)

ILS Z or LOC Z RWY 17

AERONAUTICAL DATA TABULATION

ILS/LOC Z Approach to RWY 17 from LENON(IAF)		
	Fix/Point	Coordinates
	LENON(IAF)	36°56'46.3"N 129°35'23.0"E
	TL041(SDF)	36°58'07.9"N 129°29'46.5"E
	UMNAE(IF) BRG 170.91° / 10.3NM IUJS	36°56'38.6"N 129°23'49.1"E
	5.7D IUJS(FAF) BRG 170.93° / 5.7NM IUJS	36°52'40.6"N 129°25'21.6"E
	4.1D IUJS(SDF LOC Only) BRG 170.95° / 4.1NM IUJS	36°50'50.7"N 129°26'04.2"E
	2.0D IUJS(MAPt LOC Only) BRG 170.95° / 2.0NM IUJS	36°48'50.3"N 129°26'50.9"E
	THR RWY17	36°47'05.09"N 129°27'31.62"E
	UJN VORTAC	36°46'35.2"N 129°27'26.9"E
	TL045	36°41'52.3"N 129°29'32.6"E
	BANYA	36°40'12.4"N 129°40'05.8"E

Change : Information of Fix/point.

**INSTRUMENT
APPROACH
CHART - ICAO**

AERODROME ELEV 175 ft
HEIGHTS RELATED TO
THR RWY 17 - ELEV 175 ft

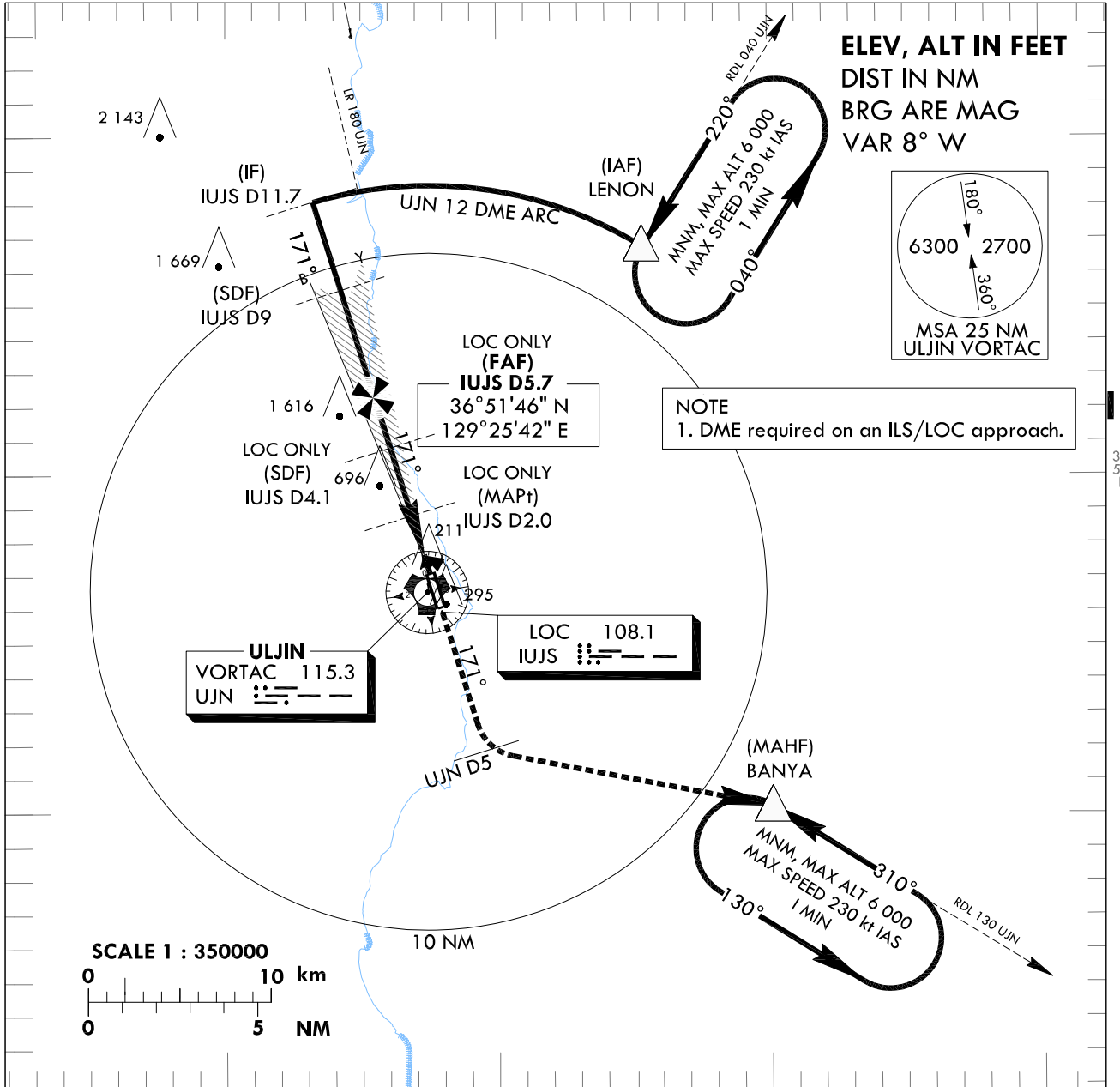
POHANG	APP	122.550
		317.65
ULJIN	TWR	118.55
		317.45

ULJIN/ULjin(RKTL)

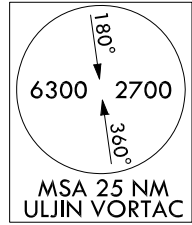
ILS or LOC Y RWY 17

Note : Approach under ICAO Flight Procedures.

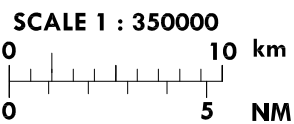
129°30'E



ELEV, ALT IN FEET
DIST IN NM
BRG ARE MAG
VAR 8° W

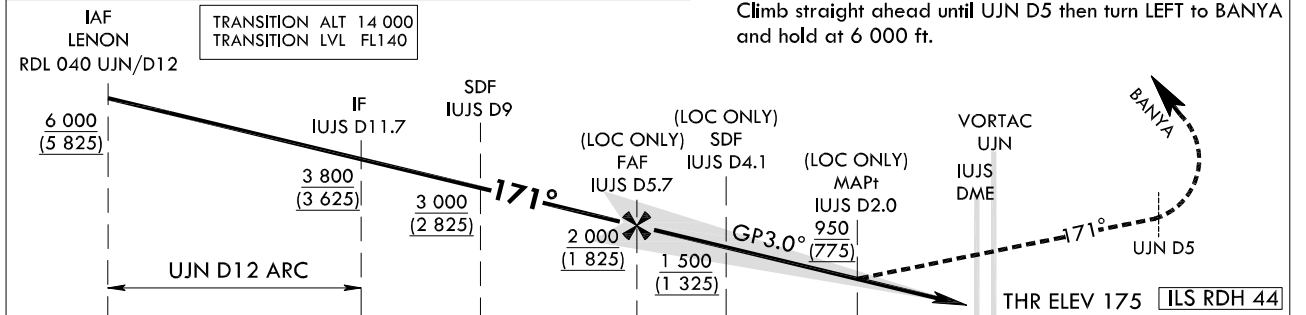


NOTE
1. DME required on an ILS/LOC approach.



RECOMMENDED PROFILE(LOC ONLY)	DME IUJS	5	4	3	2
Final Approach Gradient 5.31%, 323 ft/NM	ALT(HGT)	1 777 (1 602)	1 455 (1 280)	1 132 (957)	810 (635)

MISSED APPROACH
Climb straight ahead until UJN D5 then turn LEFT to BANYA and hold at 6 000 ft.



NM FROM THR RWY 17		5	2	THR RWY 17
--------------------	--	---	---	------------

CATEGORY	DA(H)/MDA(H)	A	B	C	D	Knots						
						60	90	120	150	180		
CAT-1	FULL	375	800 m				Rate of descent V/V fpm	323	485	646	808	970
	ALS INOP	(200)	1 200 m					Timing NOT authorized for defining the MAPt				
LOC	FULL	950	3 200 m				*Circling not authorized					
	ALS INOP	(775)	3 600 m									

Change : Information of obstacle height.

ULJIN / Ujin(RKTL)

ILS Y or LOC Y RWY 17

AERONAUTICAL DATA TABULATION

ILS/LOC Y Approach to RWY 17 from LENON(IAF)		
	Fix/Point	Coordinates
LENON(IAF)	R 040 UJN/ 12.00NM UJN	36°56'46.3"N 129°35'23.0"E
11.7D IUJS(IF)	BRG 170.91° / 11.71NM IUJS	36°58'06.9"N 129°23'14.8"E
9.0D IUJS(SDF)	BRG 170.91° / 9.00NM IUJS	36°55'31.8"N 129°24'15.1"E
5.7D IUJS(FAF)	BRG 170.93° / 5.66NM IUJS	36°51'46.1"N 129°25'42.7"E
4.1D IUJS(SDF LOC Only)	BRG 170.95° / 4.10NM IUJS	36°50'50.7"N 129°26'04.2"E
2.0D IUJS(MAPt LOC Only)	BRG 170.95° / 2.00NM IUJS	36°48'50.3"N 129°26'50.9"E
THR RWY17		36°47'05.09"N 129°27'31.62"E
UJN VORTAC		36°46'35.2"N 129°27'26.9"E
D5 UJN	R 171 UJN/ 5.00NM UJN	36°41'52.3"N 129°29'32.6"E
BANYA	R 130 UJN/ 12.00NM UJN	36°40'12.4"N 129°40'05.8"E

Change : Information of Fix/point.

**INSTRUMENT
APPROACH
CHART - ICAO**

AERODROME ELEV 175 ft
HEIGHTS RELATED TO
THR RWY 17 - ELEV 175 ft

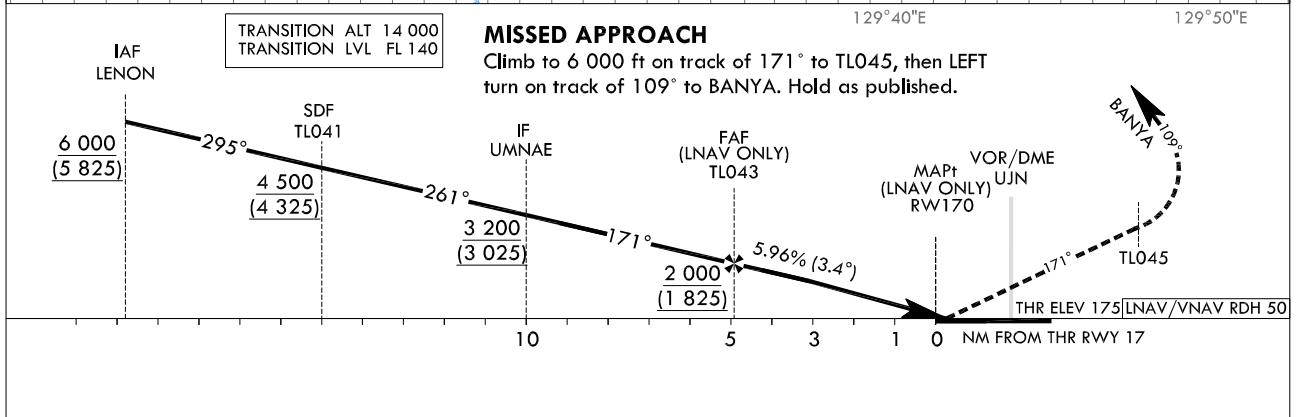
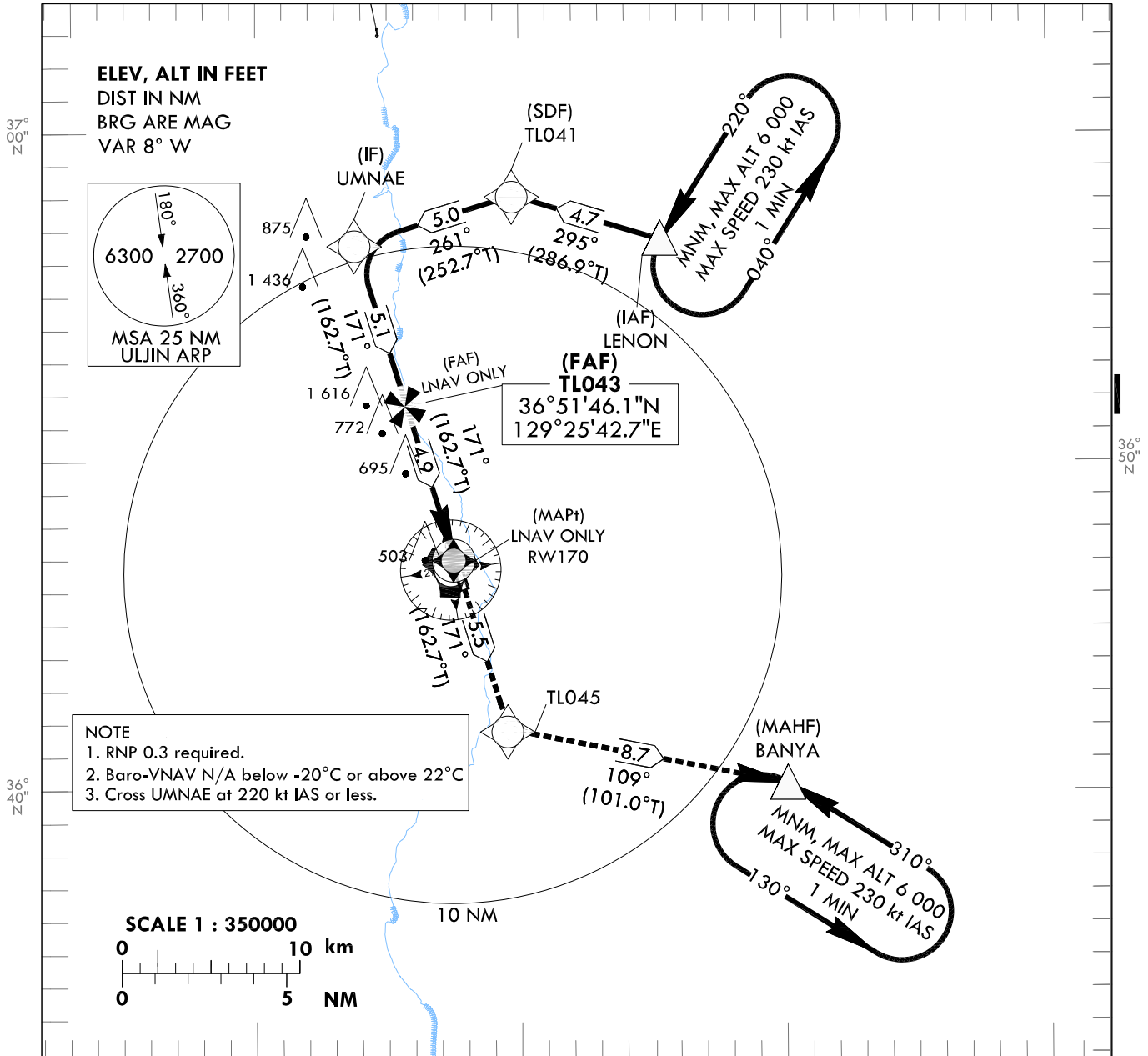
POHANG	APP	122.550
		317.65
ULJIN	TWR	118.55
		317.45

ULJIN/ULjin(RKTL)

RNAV(GNSS) RWY 17

Note : Approach under ICAO Flight Procedures.

129°30'E



CATEGORY		DA(H)/MDA(H)	A	B	C	D
STA	LNAV/VNAV	FULL	690 (515)	2 000 m		
		ALS INOP		2 400 m		
	LNAV	FULL	960 (785)	3 200 m		
		ALS INOP		3 600 m		

Rate of descent	Knots	60	90	120	150	180
	V/V fpm	362	543	725	906	1 087

Timing NOT authorized for defining the MAPt
*Circling not authorized

Change : Information of obstacle height.

RNAV(GNSS) RWY 17

Instrument approach Procedure Coding Tables

RNAV(GNSS) RWY 17 - via LENON(IAF)

Serial Number	Path Descriptor	Waypoint Identifier	Fly-over	Course/Track °M(°T)	Distance (NM)	Turn direction	Altitude (ft)	Speed (kt)	Coordinates	VPA/ TCH	Navigation specification	Remarks
001	IF	LENON	-	-	-	-	+6 000	-	365646.3 N 1293523.0 E	-	RNP APCH	IAF
002	TF	TL041	-	295(286.9)	4.7	-	+4 500	-	365807.9 N 1292946.5 E	-	RNP APCH	SDF
003	TF	UMNAE	-	261(252.7)	5.0	-	+3 200	-	365638.6 N 1292349.1 E	-	RNP APCH	IF
004	TF	TL043	-	171(162.7)	5.1	-	+2 000	-	365146.1 N 1292542.7 E	-	RNP APCH	FAF
005	TF	RW170	Y	171(162.7)	4.9	-	+960	-	364705.09 N 1292731.62 E	-3.41 /50	RNP APCH	MAPt
006	TF	TL045	-	171(162.7)	5.5	-	-	-	364152.3 N 1292932.6 E	-	RNP APCH	-
007	HM	BANYA	-	109(101.0)	8.7	-	@6 000	-	364012.4 N 1294005.8 E	-	RNP APCH	1 min (outbound timing)

**INSTRUMENT
APPROACH
CHART - ICAO**

AERODROME ELEV 175 ft
HEIGHTS RELATED TO
THR RWY 17 - ELEV 175 ft

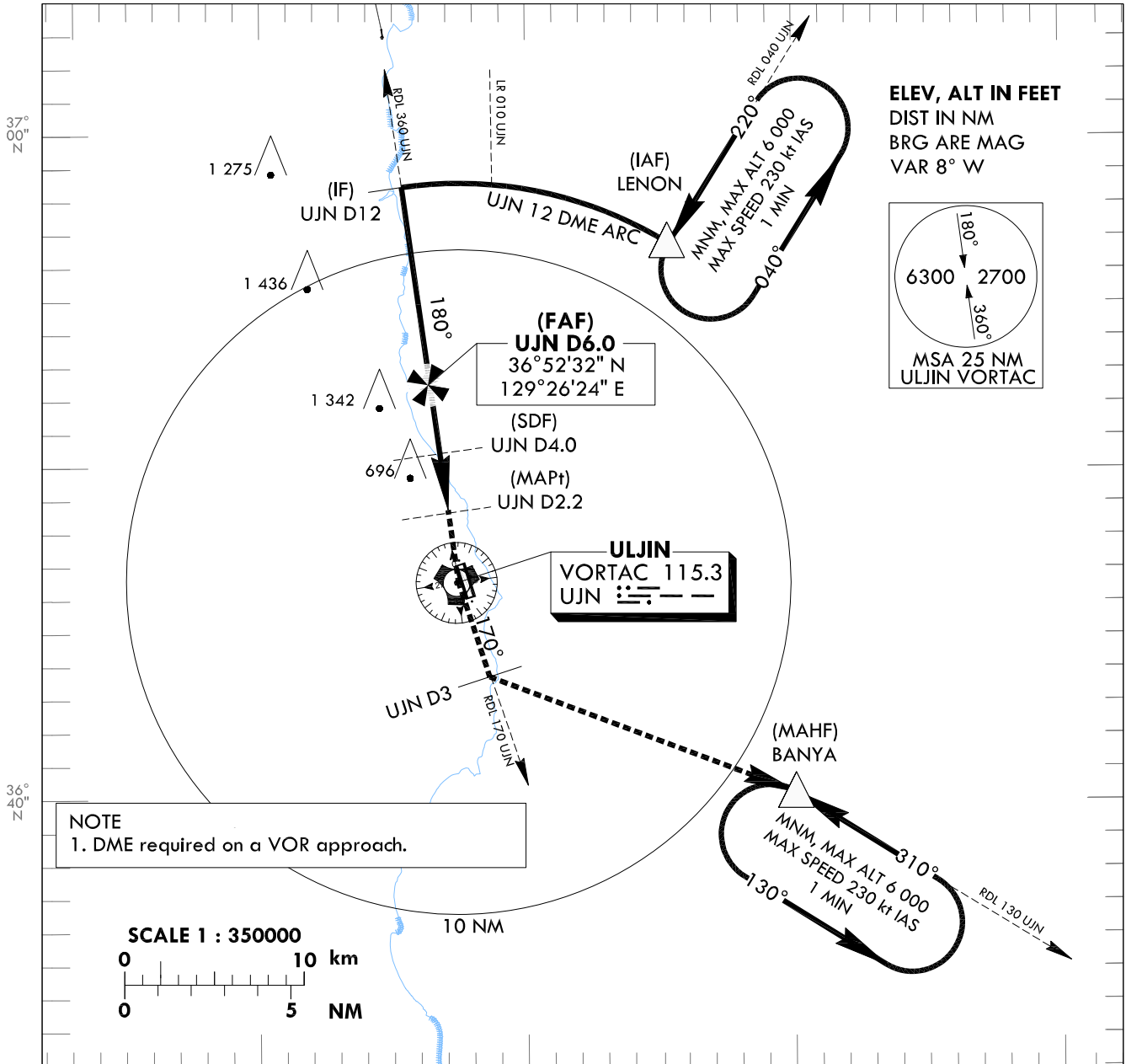
POHANG	APP	122.550
		317.65
ULJIN	TWR	118.55
		317.45

ULJIN/ULjin(RKTL)

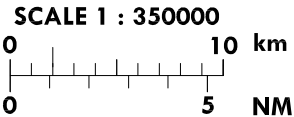
VOR RWY 17

Note : Approach under ICAO Flight Procedures.

129°30'E



NOTE
1. DME required on a VOR approach.



129°20'E		TRANSITION ALT 14 000 TRANSITION LVL FL 140		RECOMMENDED PROFILE		DME UJN		5	4	3	2.5		
		Final Approach Gradient 5.30%, 323 ft/NM				ALT(HGT)		1 680 (1 505)	1 360 (1 184)	1 034 (859)	879 (704)		
IAF LENON RDL 040 UJN/D12		MISSED APPROACH Climb on RDL 360 UJN to UJN and RDL 170 UJN to 3 DME, then turn LEFT to BANYA and hold at 6 000 ft.		VORTAC UJN		BANYA							
6 000 (5 825)		IF UJN D12		FAF UJN D6		SDF UJN D4		MAPt UJN D2.2					
3 800 (3 625)		UJN D12 ARC		2 000 (1 825)		1 360 (1 185)		940 (765)					
1 700		5.3%(3.0%)		1 360 (1 185)		940		THR ELEV 175					
11 NM		5		2		THR RWY 17							
CATEGORY		MDA(H)	A	B	C	D	Rate of descent	Knots	60	90	120	150	180
FULL		940	3 200 m				V/V	fpm	323	485	646	808	970
ALS INOP		(765)	3 600 m				Timing NOT authorized for defining the MAPt. *Circling not authorized.						

Change : Information of procedure name, obstacle height and minimum altitude.

AERONAUTICAL DATA TABULATION

VOR Approach to RWY 17 from LENON(IAF)		
	Fix/Point	Coordinates
LENON(IAF)	R 040 UJN/ 12.00NM UJN	36°56'46.3"N 129°35'23.0"E
12.0D UJN(IF)	BRG 180.27° / 12.00NM UJN	36°58'28.9"N 129°25'22.0"E
6.0D UJN(FAF)	BRG 180.27° / 6.00NM UJN	36°52'32.1"N 129°26'24.4"E
4.0D UJN(SDF)	BRG 180.27° / 4.00NM UJN	36°50'33.0"N 129°26'45.4"E
2.2D UJN(MAPt)	BRG 180.27° / 2.20NM UJN	36°48'45.7"N 129°27'04.1"E
THR RWY17	Final Approach Descent Angle 3°	36°47'05.09"N 129°27'31.62"E
UJN VORTAC		36°46'35.2"N 129°27'26.9"E
D3 UJN	R 170 UJN/ 3.00NM UJN	36°43'44.4"N 129°28'38.6"E
BANYA	R 130 UJN/ 12.00NM UJN	36°40'12.4"N 129°40'05.8"E

Change : Information of Fix/point.

**INSTRUMENT
APPROACH
CHART - ICAO**

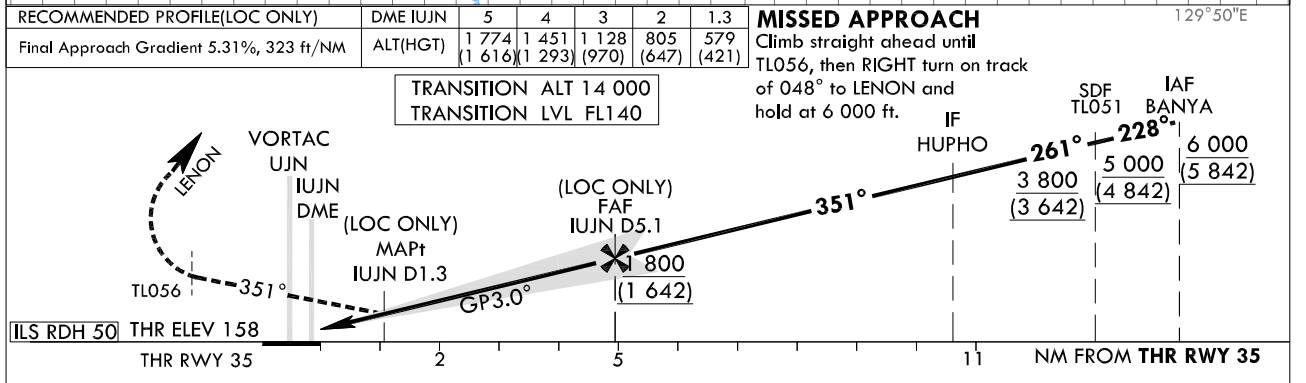
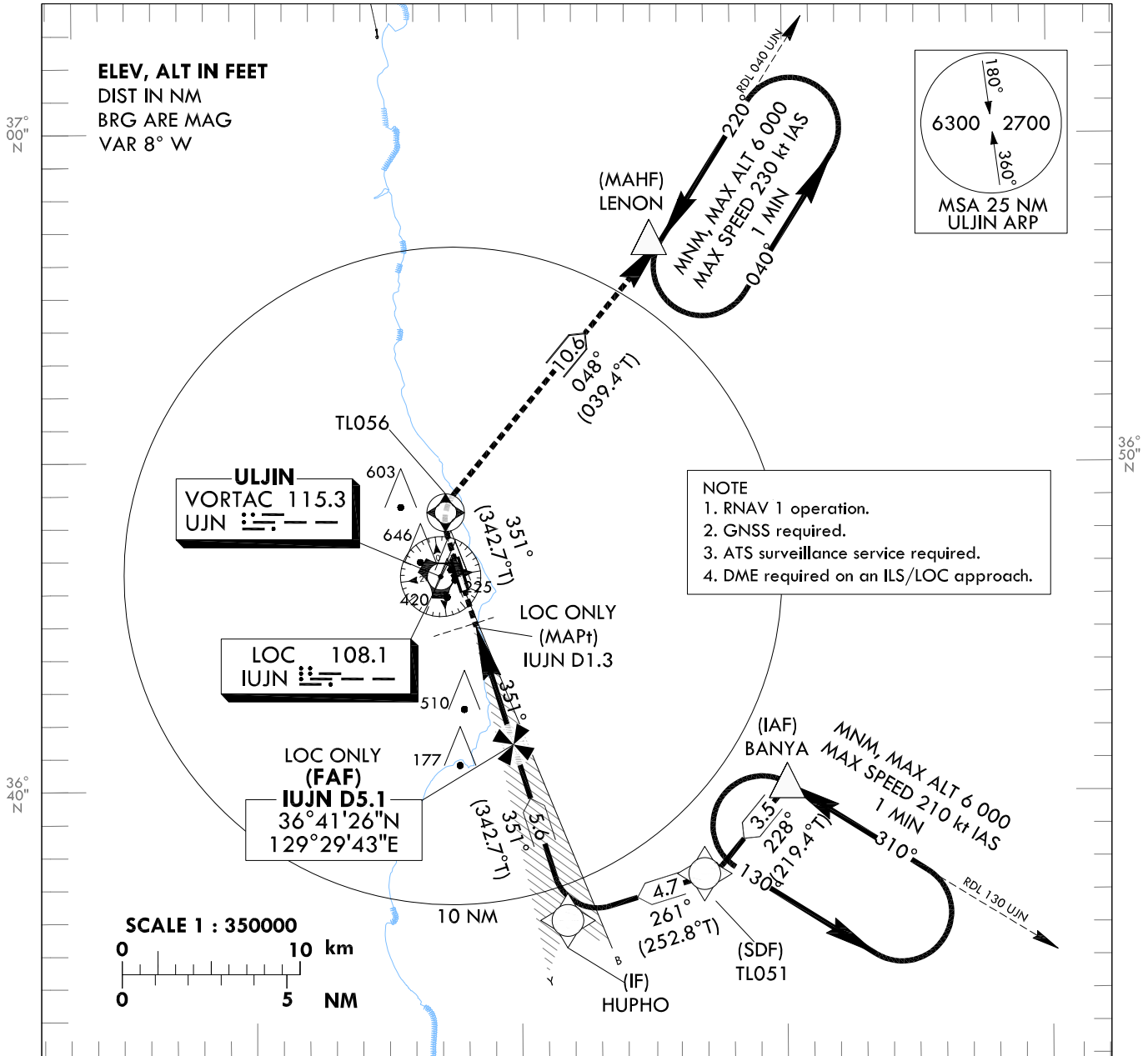
AERODROME ELEV 175 ft
HEIGHTS RELATED TO
THR RWY 35 - ELEV 158 ft

POHANG APP 122.550
317.65
ULJIN TWR 118.55
317.45

ULJIN/ULjin(RKTL)

ILS Z or LOC Z RWY 35

Note : Approach under ICAO Flight Procedures.



CATEGORY	DA(H)/MDA(H)	A	B	C	D	
CAT-1 (CG 2.5%)	FULL	511 (353)	1 100 m			
	ALS INOP		1 800 m			
CAT-1 (CG 4.0%)	FULL	391 (233)	RVR 550 m, VIS 800 m			
	ALS INOP		1 200 m			
LOC	FULL	580 (422)	1 500 m			
	ALS INOP		2 200 m			

ULJIN / Ujin(RKTL)

ILS Z or LOC Z RWY 35

AERONAUTICAL DATA TABULATION

ILS/LOC Z Approach to RWY 35 from BANYA(IAF)		
	Fix/Point	Coordinates
BANYA(IAF)	R 130 UJN/12.00NM UJN	36°40'12.4"N 129°40'05.8"E
TL051(SDF)	BRG 261.04°	36°37'30.8"N 129°37'21.1"E
HUPHO(IF)	BRG 350.99°/10.65NM UJN	36°36'07.0"N 129°31'45.8"E
5.1D IUJN(FAF)	BRG 350.97°/5.08NM IUJN	36°41'26.4"N 129°29'42.5"E
1.3D IUJN (MAPT LOC Only)	BRG 350.95°/1.30NM IUJN	36°45'03.3"N 129°28'18.7"E
THR RWY 35		36°46'09.33"N 129°27'53.20"E
UJN VORTAC		36°46'35.2"N 129°27'26.9"E
TL056		36°48'33.0"N 129°26'57.6"E
LENON		36°56'46.3"N 129°35'23.0"E

Change : Information of fix/point.

**INSTRUMENT
APPROACH
CHART - ICAO**

AERODROME ELEV 175 ft
HEIGHTS RELATED TO
THR RWY 35 - ELEV 158 ft

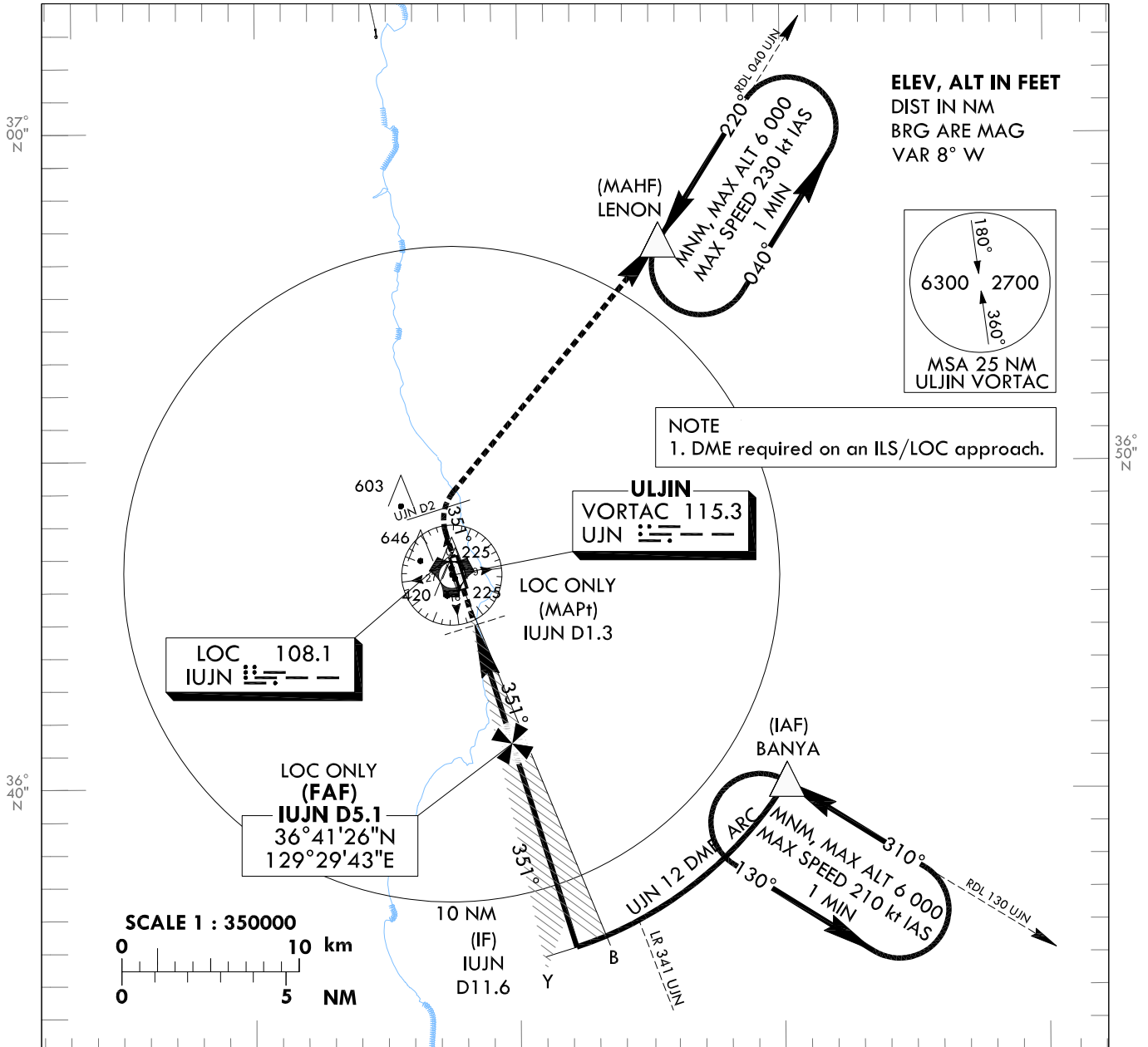
POHANG	APP	122.550
		317.65
ULJIN	TWR	118.55
		317.45

ULJIN/ULjin(RKTL)

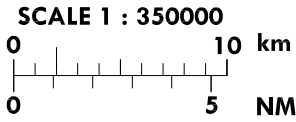
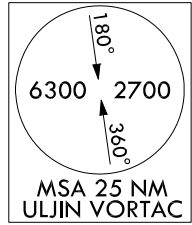
ILS Y or LOC Y RWY 35

Note : Approach under ICAO Flight Procedures.

129°30'E



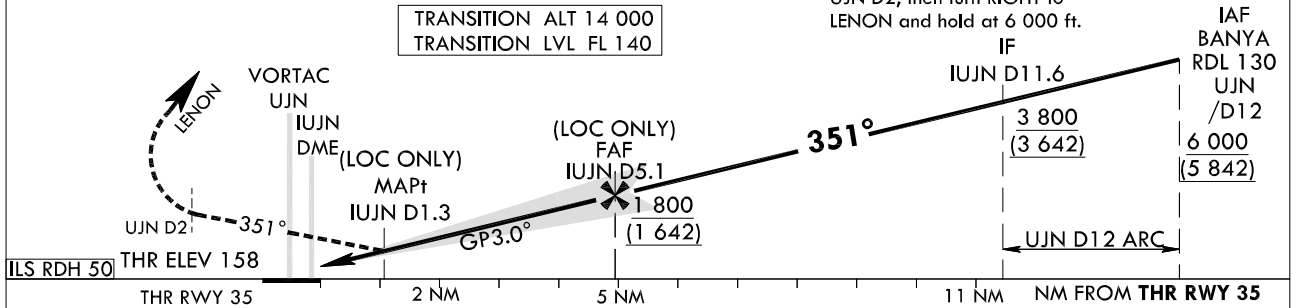
NOTE
1. DME required on an ILS/LOC approach.



RECOMMENDED PROFILE(LOC ONLY)	DME IUJN	5	4	3	2	1.3
Final Approach Gradient 5.31%, 323 ft/NM	ALT(HGT)	1 774 (1 616)	1 451 (1 293)	1 128 (970)	805 (647)	579 (421)

MISSED APPROACH

Climb straight ahead until
UJN D2, then turn RIGHT to
LENON and hold at 6 000 ft.



CATEGORY	DA(H)/MDA(H)	A	B	C	D	Rate of descent	Knots						
							60	90	120	150	180		
STA	CAT-1 (CG 2.5%)	FULL	511 (353)	1 100 m					322	483	644	805	966
		ALS INOP		1 800 m									
CAT-1 (CG 4.0%)	FULL	391 (233)	RVR 550 m, VIS 800 m					322	483	644	805	966	
	ALS INOP		1 200 m										
LOC	FULL	580 (422)	1 500 m					322	483	644	805	966	
	ALS INOP		2 200 m										

Timing NOT authorized for defining the MAPt
*Circling not authorized

ULJIN / Uijin(RKTL)

ILS Y or LOC Y RWY 35

AERONAUTICAL DATA TABULATION

ILS/LOC Y Approach to RWY 35 from BANYA(IAF)		
	Fix/Point	Coordinates
BANYA(IAF)	R 130 UJN/12.00NM UJN	36°40'12.4"N 129°40'05.8"E
11.6D IUJN(IF)	BRG 350.99°/11.63NM IUJN	36°35'10.5"N 129°32'07.5"E
5.1D IUJN(FAF)	BRG 350.97°/5.08NM IUJN	36°41'26.4"N 129°29'42.5"E
1.3D IUJN(MAPT LOC Only)	BRG 350.95°/1.30NM IUJN	36°45'03.3"N 129°28'18.7"E
THR RWY 35		36°46'09.33"N 129°27'53.20"E
UJN VORTAC		36°46'35.2"N 129°27'26.9"E
D2 UJN	R 351 UJN/2.00NM UJN	36°48'33.0"N 129°26'57.6"E
LENON	R 040 UJN/12.00NM UJN	36°56'46.3"N 129°35'23.0"E

Change : Information of fix/point.

**INSTRUMENT
APPROACH
CHART - ICAO**

AERODROME ELEV 175 ft
HEIGHTS RELATED TO
THR RWY 35 - ELEV 158 ft

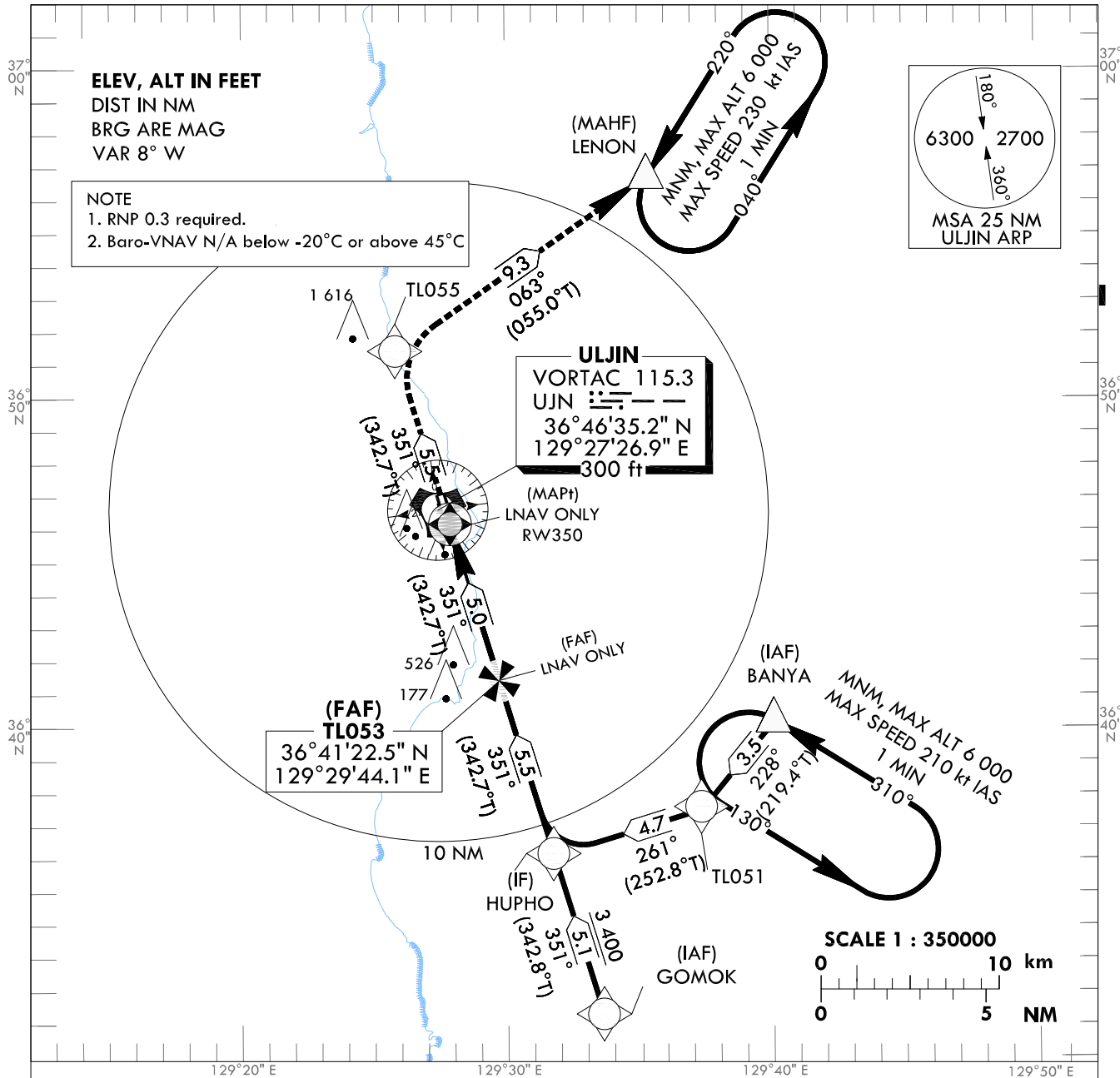
POHANG	APP	122.550
		317.65
ULJIN	TWR	118.55
		317.45

ULJIN/ULjin(RKTL)

RNAV(GNSS) RWY 35

Note : Approach under ICAO Flight Procedures.

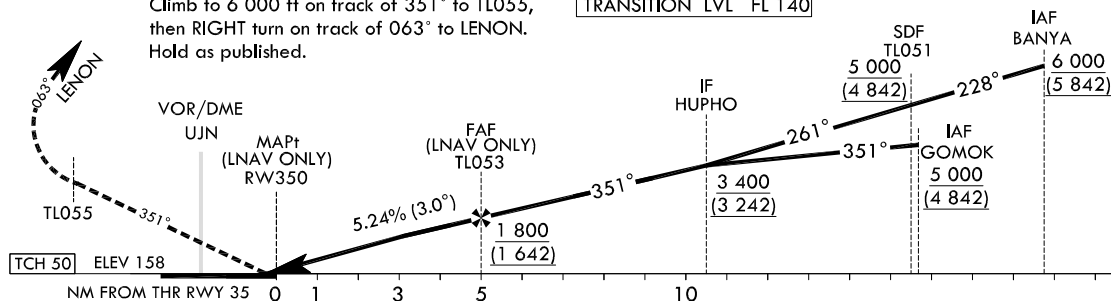
129°30'E



MISSED APPROACH

Climb to 6 000 ft on track of 351° to TL055,
then RIGHT turn on track of 063° to LENON.
Hold as published.

TRANSITION ALT 14 000
TRANSITION LVL FL 140



CATEGORY		DA(H)/MDA(H)	A	B	C	D								
STA	LNAV/VNAV	FULL	700 (542)	2 200 m				Rate of descent V/V fpm	Knots	60	90	120	150	180
		ALS INOP	760 (602)	2 900 m										
	LNAV (CG3.0%)	FULL	760 (602)	2 100 m										
		ALS INOP	760 (602)	2 800 m										
Timing NOT authorized for defining the MAPt														
*Circling not authorized														

Change : Information of obstacle height.

RNAV(GNSS) RWY 35

Instrument approach Procedure Coding Tables

RNAV(GNSS) RWY 35 - via BANYA(IAF)												
Serial Number	Path Descriptor	Waypoint Identifier	Fly-over	Course/Track °M(°T)	Distance (NM)	Turn direction	Altitude (ft)	Speed (kt)	Coordinates	VPA/TCH	Navigation specification	Remarks
001	IF	BANYA	-	-	-	-	+6 000	-	364012.4 N 1294005.8 E	-	RNP APCH	IAF
002	TF	TL051	-	228(219.4)	3.5	-	+5 000	-	363730.8 N 1293721.1 E	-	RNP APCH	SDF
003	TF	HUPHO	-	261(252.8)	4.7	-	+3 400	-	363607.0 N 1293145.8 E	-	RNP APCH	IF
004	TF	TL053	-	351(342.7)	5.5	-	+1 800	-	364122.5 N 1292944.1 E	-	RNP APCH	FAF
005	TF	RW350	Y	351(342.7)	5.0	-	+930	-	364609.33 N 1292753.20 E	-3.0/50	RNP APCH	MAPt
006	TF	TL055	-	351(342.7)	5.5	-	-	-	365125.4 N 1292550.7 E	-	RNP APCH	-
007	HM	LENON	-	063(055.0)	9.3	-	@6 000	-	365646.3 N 1293523.0 E	-	RNP APCH	1/MIN (outbound timing)

RNAV(GNSS) RWY 35 - via GOMOK(IAF)												
Serial Number	Path Descriptor	Waypoint Identifier	Fly-over	Course/Track °M(°T)	Distance (NM)	Turn direction	Altitude (ft)	Speed (kt)	Coordinates	VPA/TCH	Navigation specification	Remarks
001	IF	GOMOK	-	-	-	-	+5 000	-	363113.6 N 1293338.6 E	-	RNP APCH	IAF
002	TF	HUPHO	-	351(342.8)	5.1	-	+3 400	-	363607.0 N 1293145.8 E	-	RNP APCH	IF
003	TF	TL053	-	351(342.7)	5.5	-	+1 800	-	364122.5 N 1292944.1 E	-	RNP APCH	FAF
004	TF	RW350	Y	351(342.7)	5.0	-	+930	-	364609.33 N 1292753.20 E	-3.0/50	RNP APCH	MAPt
005	TF	TL055	-	351(342.7)	5.5	-	-	-	365125.4 N 1292550.7 E	-	RNP APCH	-
006	HM	LENON	-	063(055.0)	9.3	-	@6 000	-	365646.3 N 1293523.0 E	-	RNP APCH	1/MIN (outbound timing)

**INSTRUMENT
APPROACH
CHART - ICAO**

AERODROME ELEV 175 ft
HEIGHTS RELATED TO
THR RWY 35 - ELEV 158 ft

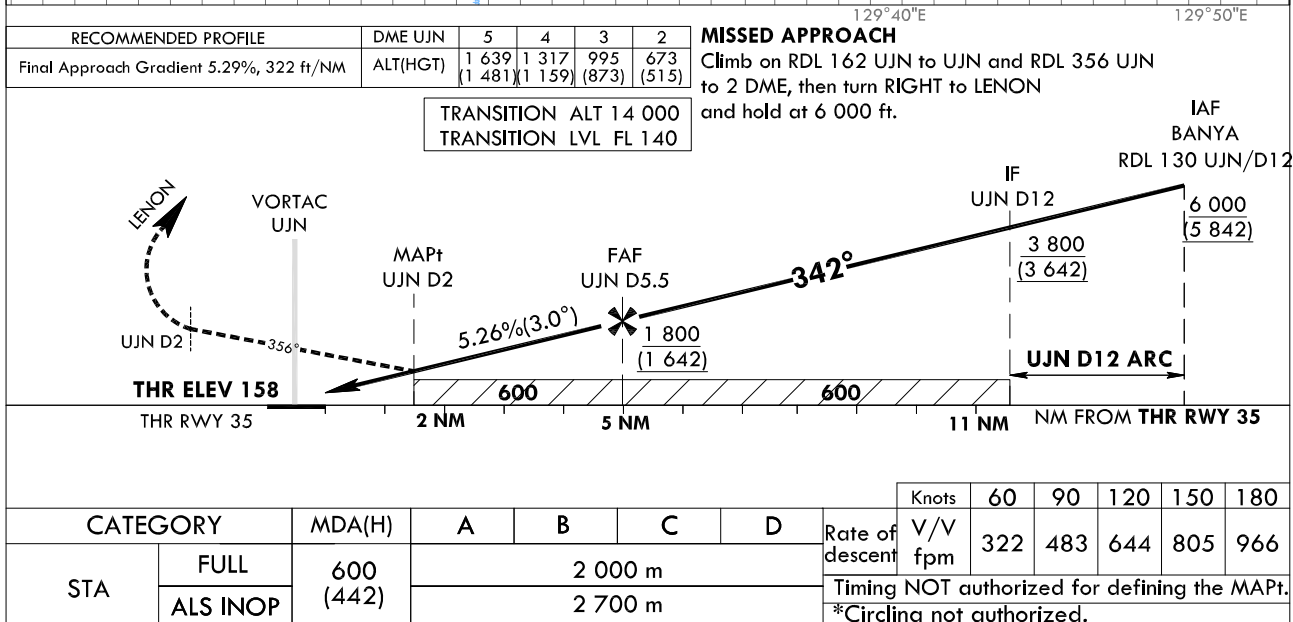
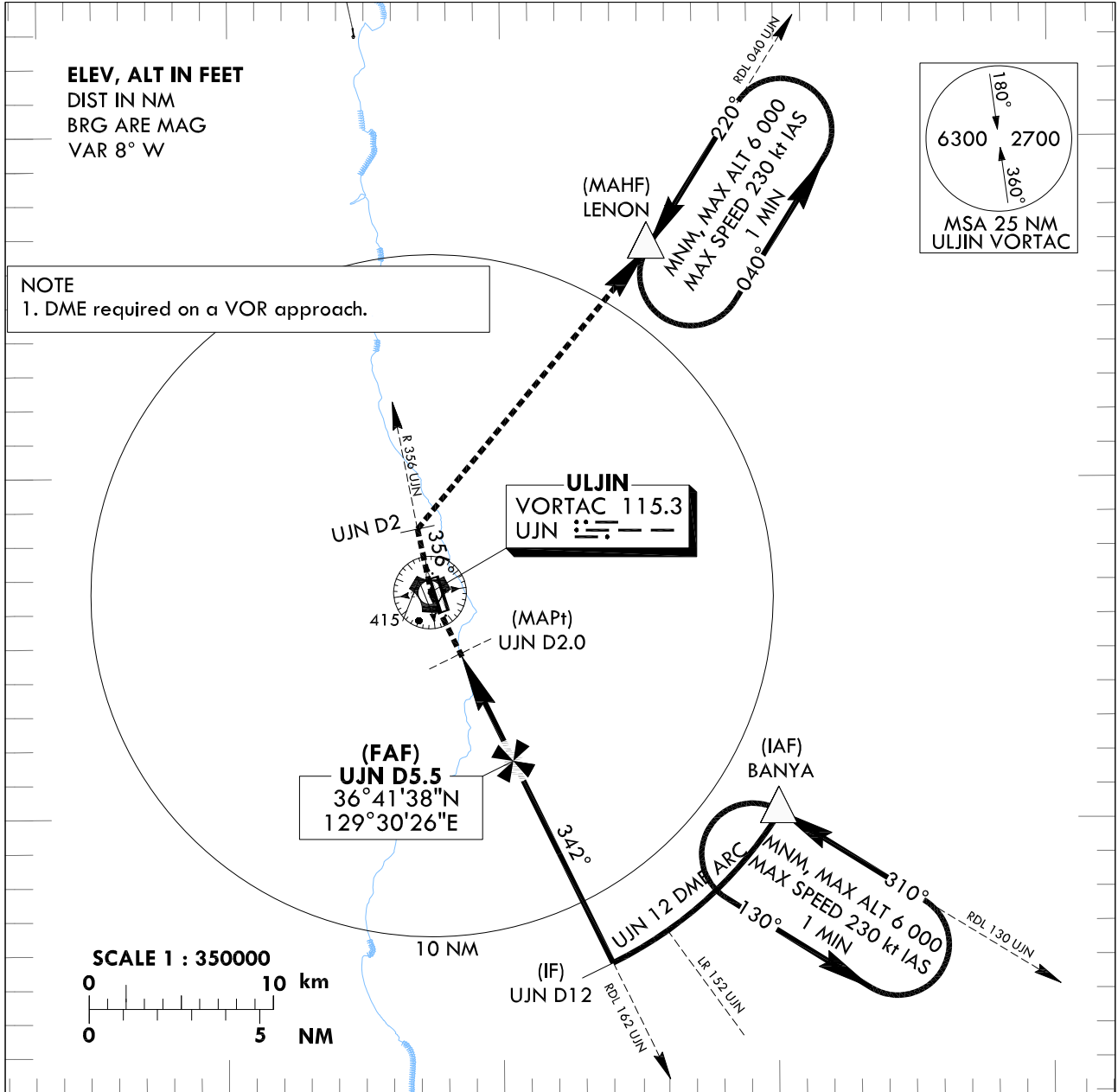
POHANG	APP	122.550
		317.65
ULJIN	TWR	118.55
		317.45

ULJIN/ULjin(RKTL)

VOR RWY 35

Note : Approach under ICAO Flight Procedures.

129°30'E



AERONAUTICAL DATA TABULATION

VOR Approach to RWY 35 from BANYA(IAF)		
	Fix/Point	Coordinates
	BANYA(IAF) R 130 UJN/12.00NM UJN	36°40'12.4"N 129°40'05.8"E
	12.0D UJN(IF) BRG 342.27°/12.00NM UJN	36°35'46.8"N 129°33'59.3"E
	6.3D UJN(FAF) BRG 342.27°/6.30NM UJN	36°41'38.1"N 129°30'26.8"E
	2.4D UJN(MAPt) BRG 342.27°/2.40NM UJN	36°44'47.2"N 129°28'32.4"E
	THR RWY 35 Final Approach Descent Angle 3°	36°46'09.33"N 129°27'53.20"E
	UJN VORTAC	36°46'35.2"N 129°27'26.9"E
	D2 UJN R 356 UJN/2.00NM UJN	36°48'32.7"N 129°26'55.9"E
	LENON R 040 UJN/12.00NM UJN	36°56'46.3"N 129°35'23.0"E

Change : Information of fix/point.