

**STANDARD
DEPARTURE CHART
INSTRUMENT(SID) - ICAO**

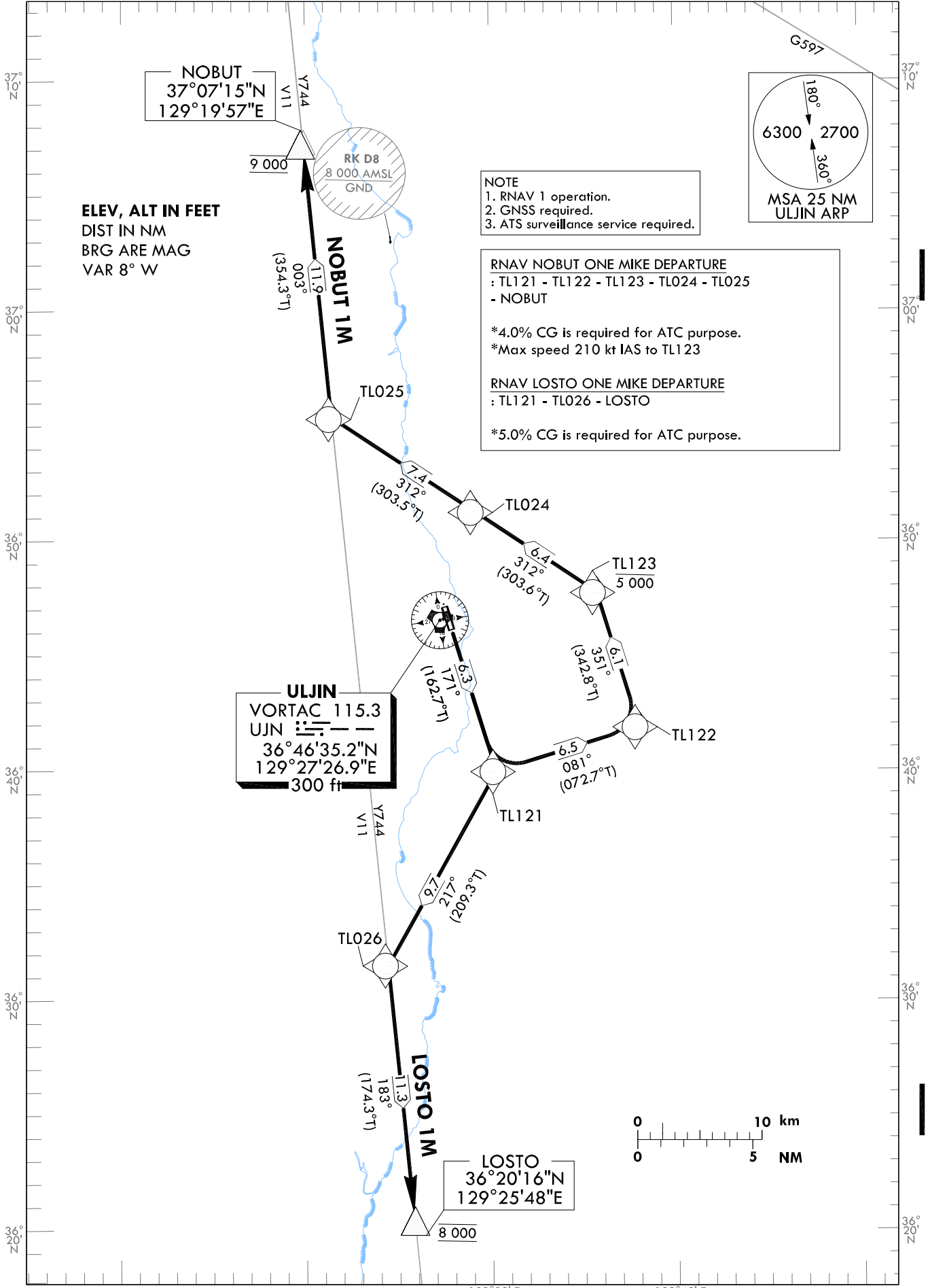
TRANSITION ALT 14 000
TRANSITION LVL FL 140

POHANG DEP 122.550
317.65
ULJIN TWR 118.55
317.45

**ULJIN/ULjin(RKTL)
RWY 17
RNAV NOBUT 1M
RNAV LOSTO 1M**

Note : Departure under ICAO flight Procedures.

129°30' E



**ELEV, ALT IN FEET
DIST IN NM
BRG ARE MAG
VAR 8° W**

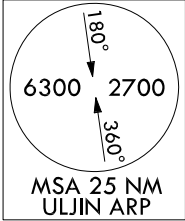
NOTE
1. RNAV 1 operation.
2. GNSS required.
3. ATS surveillance service required.

RNAV NOBUT ONE MIKE DEPARTURE
: TL121 - TL122 - TL123 - TL024 - TL025
- NOBUT

*4.0% CG is required for ATC purpose.
*Max speed 210 kt IAS to TL123

RNAV LOSTO ONE MIKE DEPARTURE
: TL121 - TL026 - LOSTO

*5.0% CG is required for ATC purpose.



Change : Information of bearing.

129°30' E

129°40' E

AERONAUTICAL DATA TABULATION

Standard Instrument Departure Procedure Coding Tables

Serial Number	Path Descriptor	Waypoint Identifier	Fly-over	Course/Track °M(°T)	Distance (NM)	Turn direction	Altitude (ft)	Speed (kt)	Coordinates	VPA/TCH	Navigation specification	Remarks
001	CF	TL121	-	171(162.7)	6.3	-	-	-210	363957.5 N 1293016.9 E	-	RNAV 1	-
002	TF	TL122	-	081(072.7)	6.5	-	-	-210	364153.2 N 1293760.0 E	-	RNAV 1	-
003	TF	TL123	-	351(342.8)	6.1	-	-5 000	-210	364745.8 N 1293544.3 E	-	RNAV 1	-
004	TF	TL024	-	312(303.6)	6.4	-	-	-	365117.2 N 1292907.5 E	-	RNAV 1	-
005	TF	TL025	-	312(303.5)	7.4	-	-	-	365522.2 N 1292126.0 E	-	RNAV 1	-
006	TF	NOBUT	-	003(354.3)	11.9	-	@9 000	-	370715.1 N 1291956.6 E	-	RNAV 1	-

Serial Number	Path Descriptor	Waypoint Identifier	Fly-over	Course/Track °M(°T)	Distance (NM)	Turn direction	Altitude (ft)	Speed (kt)	Coordinates	VPA/TCH	Navigation specification	Remarks
001	CF	TL121	-	171(162.7)	6.3	-	-	-	363957.5 N 1293016.9 E	-	RNAV 1	-
002	TF	TL026	-	217(209.3)	9.7	-	-	-	363129.8 N 1292424.6 E	-	RNAV 1	-
003	TF	LOSTO	-	183(174.3)	11.3	-	@8 000	-	362015.8 N 1292548.3 E	-	RNAV 1	-

Change : Information of bearing.

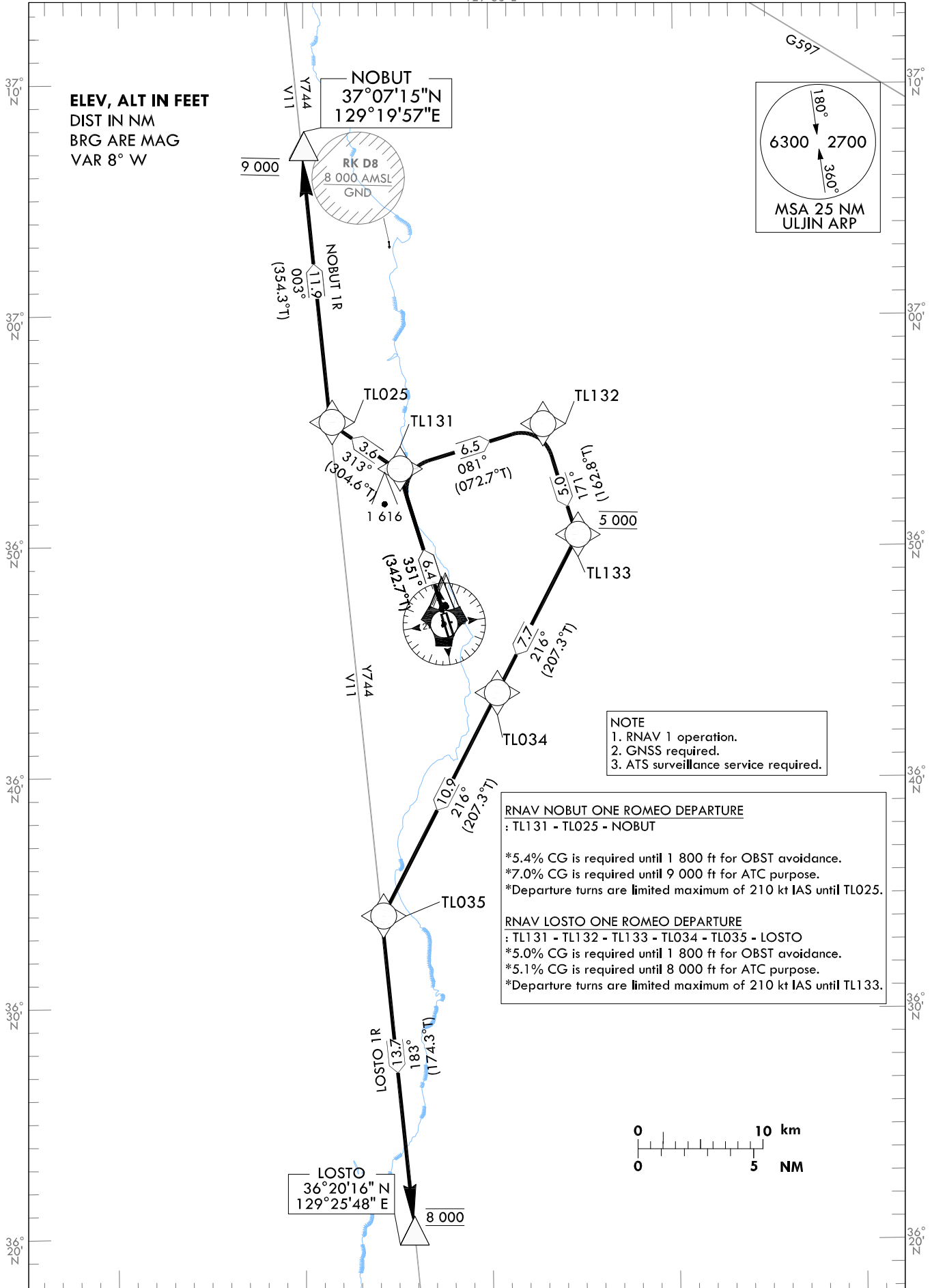
**STANDARD
DEPARTURE CHART
INSTRUMENT(SID) - ICAO**

TRANSITION ALT 14 000
TRANSITION LVL FL 140

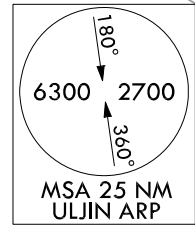
POHANG DEP 122.550
317.65
ULJIN TWR 118.55
317.45

**ULJIN/ULjin(RKTL)
RWY 35
RNAV NOBUT 1R
RNAV LOSTO 1R**

Note : Departure under ICAO flight Procedures.



ELEV, ALT IN FEET
DIST IN NM
BRG ARE MAG
VAR 8° W



NOTE
1. RNAV 1 operation.
2. GNSS required.
3. ATIS surveillance service required.

RNAV NOBUT ONE ROMEO DEPARTURE
: TL131 - TL025 - NOBUT
*5.4% CG is required until 1 800 ft for OBST avoidance.
*7.0% CG is required until 9 000 ft for ATC purpose.
*Departure turns are limited maximum of 210 kt IAS until TL025.

RNAV LOSTO ONE ROMEO DEPARTURE
: TL131 - TL132 - TL133 - TL034 - TL035 - LOSTO
*5.0% CG is required until 1 800 ft for OBST avoidance.
*5.1% CG is required until 8 000 ft for ATC purpose.
*Departure turns are limited maximum of 210 kt IAS until TL133.



Change : Information of obstacle height.

ULJIN/Uljin(RKTL)
RWY 35
RNAV NOBUT 1R
RNAV LOSTO 1R

AERONAUTICAL DATA TABULATION

Standard Instrument Departure Procedure Coding Tables

RNAV NOBUT 1R												
Serial Number	Path Descriptor	Waypoint Identifier	Fly-over	Course/Track °M(°T)	Distance (NM)	Turn direction	Altitude (ft)	Speed (kt)	Coordinates	VPA/TCH	Navigation specification	Remarks
001	CF	TL131	-	351(342.7)	6.4	-	-	-210	365320.2 N 292506.2 E	-	RNAV 1	-
002	TF	TL025	-	313(304.6)	3.6	-	-	-210	365522.2 N 1292126.0 E	-	RNAV 1	-
003	TF	NOBUT	-	003(354.3)	11.9	-	@9 000	-	370715.1 N 1291956.6 E	-	RNAV 1	-

RNAV LOSTO 1R												
Serial Number	Path Descriptor	Waypoint Identifier	Fly-over	Course/Track °M(°T)	Distance (NM)	Turn direction	Altitude (ft)	Speed (kt)	Coordinates	VPA/TCH	Navigation specification	Remarks
001	CF	TL131	-	351(342.7)	6.4	-	-	-210	365320.2 N 1292506.2 E	-	RNAV 1	-
002	TF	TL132	-	081(072.7)	6.5	-	-	-210	365516.2 N 1293250.5 E	-	RNAV 1	-
003	TF	TL133	-	171(162.8)	5.0	-	@5 000	-210	365027.4 N 1293442.0 E	-	RNAV 1	-
004	TF	TL034	-	216(207.3)	7.7	-	-	-	364335.6 N 1293017.9 E	-	RNAV 1	-
005	TF	TL035	-	216(207.3)	10.9	-	-	-	363354.5 N 1292406.6 E	-	RNAV 1	-
006	TF	LOSTO	-	183(174.3)	13.7	-	@8 000	-	362015.8 N 1292548.3 E	-	RNAV 1	-

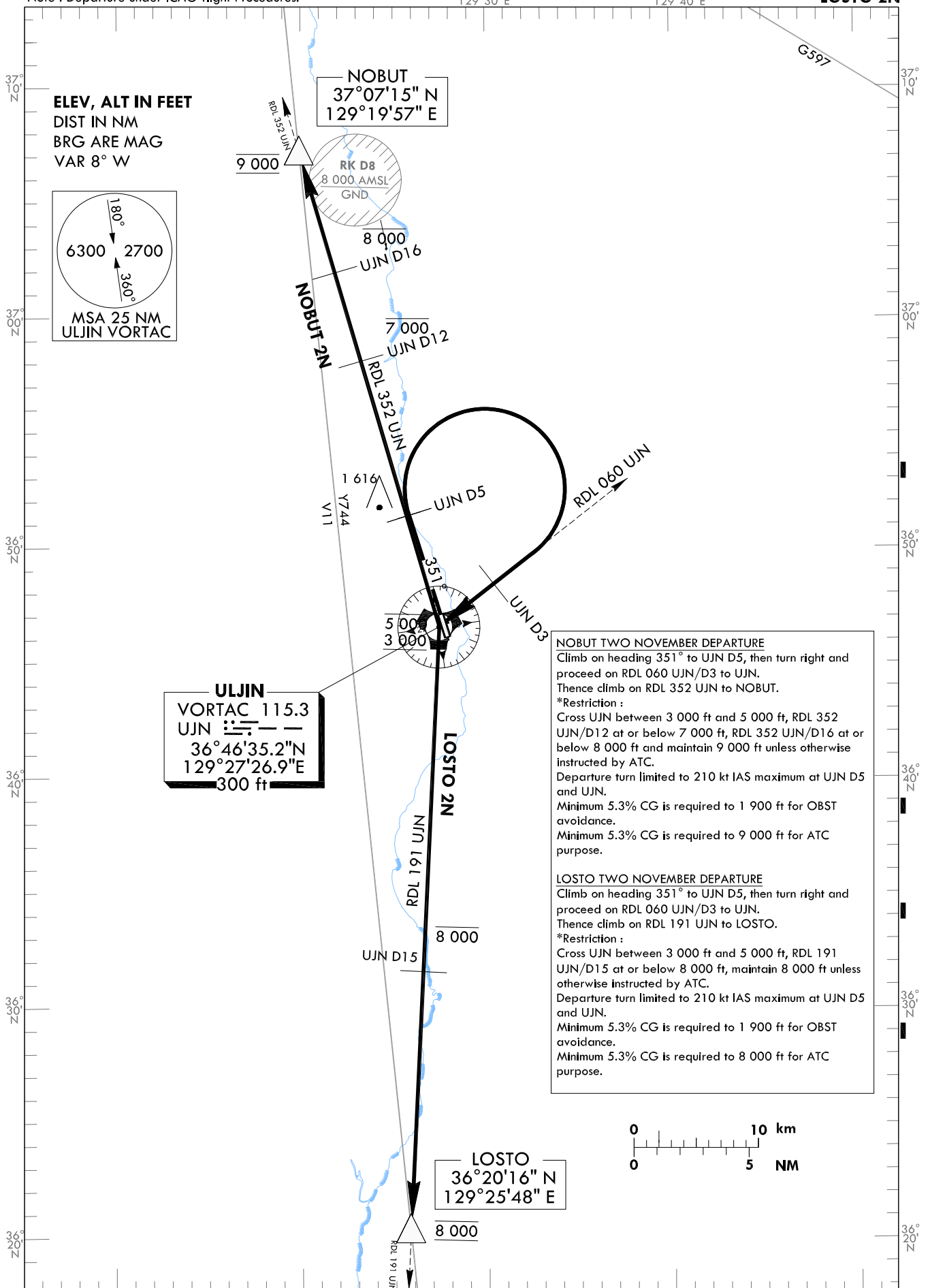
STANDARD DEPARTURE CHART
INSTRUMENT(SID) - ICAO

TRANSITION ALT 14 000
TRANSITION LVL FL 140

POHANG DEP 122.550
317.65
ULJIN TWR 118.55
317.45

ULJIN/ULjin(RKTL)
RWY 35
NOBUT 2N
LOSTO 2N

Note : Departure under ICAO flight Procedures.



NOBUT TWO NOVEMBER DEPARTURE
Climb on heading 351° to UJN D5, then turn right and proceed on RDL 060 UJN/D3 to UJN.
Thence climb on RDL 352 UJN to NOBUT.
*Restriction :
Cross UJN between 3 000 ft and 5 000 ft, RDL 352 UJN/D12 at or below 7 000 ft, RDL 352 UJN/D16 at or below 8 000 ft and maintain 9 000 ft unless otherwise instructed by ATC.
Departure turn limited to 210 kt IAS maximum at UJN D5 and UJN.
Minimum 5.3% CG is required to 1 900 ft for OBST avoidance.
Minimum 5.3% CG is required to 9 000 ft for ATC purpose.

LOSTO TWO NOVEMBER DEPARTURE
Climb on heading 351° to UJN D5, then turn right and proceed on RDL 060 UJN/D3 to UJN.
Thence climb on RDL 191 UJN to LOSTO.
*Restriction :
Cross UJN between 3 000 ft and 5 000 ft, RDL 191 UJN/D15 at or below 8 000 ft, maintain 8 000 ft unless otherwise instructed by ATC.
Departure turn limited to 210 kt IAS maximum at UJN D5 and UJN.
Minimum 5.3% CG is required to 1 900 ft for OBST avoidance.
Minimum 5.3% CG is required to 8 000 ft for ATC purpose.

Change : Information of obstacle height and minimum CG, Amended phrases(1800→1900, D30→D3).