

**AERODROME GROUND
MOVEMENT CHART - ICAO**

APRON ELEV 27 m

TWR 118.2, 236.6
GND 121.65

**JEJU / Jeju Intl
RWY 07/25, RWY 31 DEPARTURE**

ELEVATIONS AND DIMENSION IN METERS
BEARINGS ARE MAGNETIC

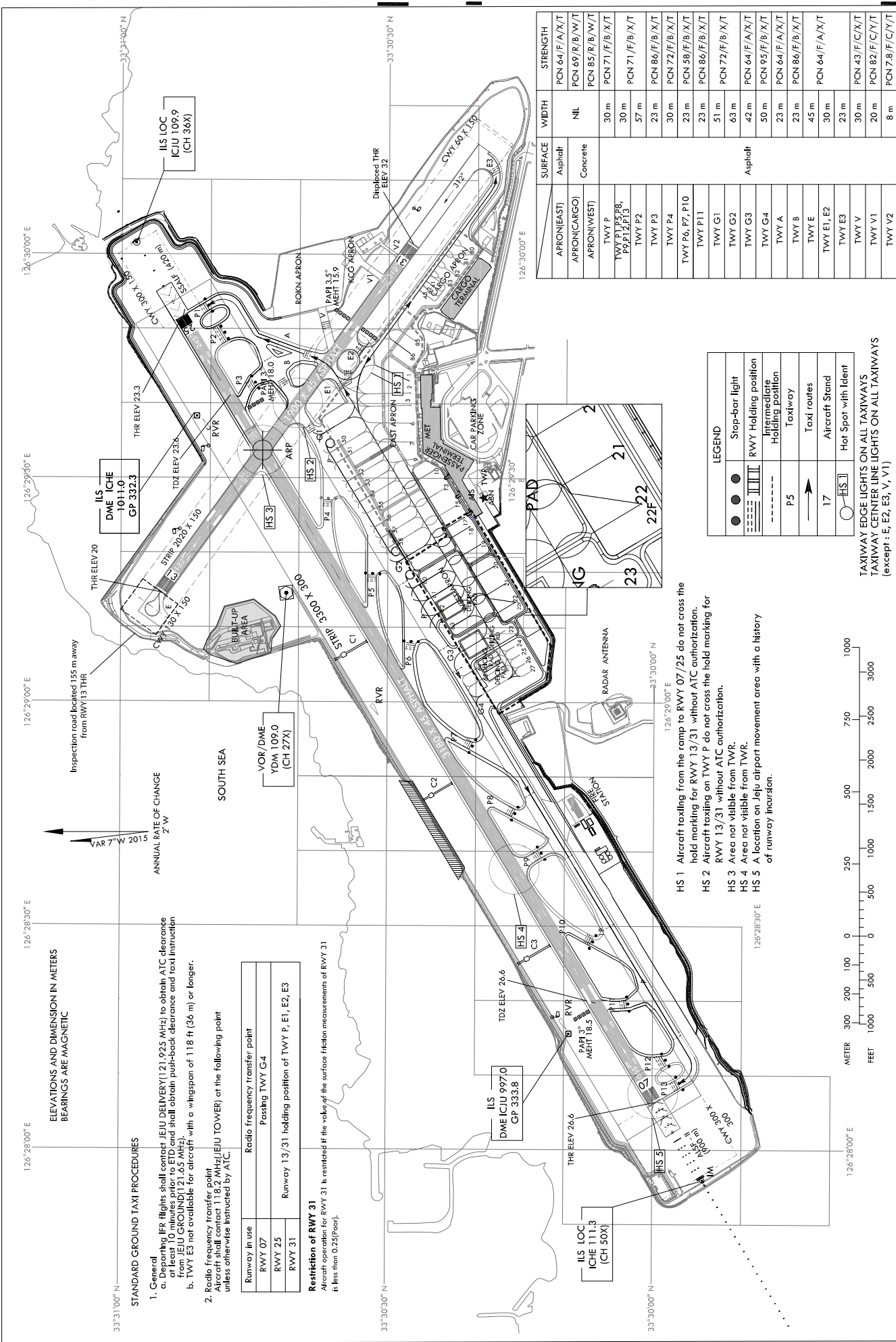
STANDARD GROUND TAXI PROCEDURES

- General
 - Departing IFR flights shall contact JEJU DELIVERY(121,925 MHz) to obtain ATC clearance and taxi instructions. Pilots shall obtain push-back clearance and taxi instruction from JEJU GROUND(121,65 MHz).
 - TWY E3 not available for aircraft with a wingspan of 118 ft (36 m) or longer.
- Radio frequency transfer point

Aircraft shall contact 118.2 MHz(JEJU TOWER) at the following point unless otherwise instructed by ATC.

| Runway in use | Radio frequency transfer point |
|---------------|--|
| RWY 07 | Passing TWY C4 |
| RWY 25 | Runway 13/31 holding position of TWY P, E1, E2, E3 |
| RWY 31 | |

Restriction of RWY 31
Aircraft operation for RWY 31 is restricted if the value of the surface friction measurements of RWY 31 is less than 0.25(Poor).



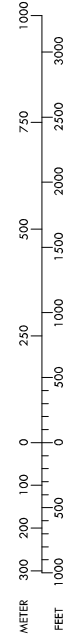
| APRON(EAST) | APRON(WEST) | TWY P | TWY Q | TWY R | TWY S | TWY T | TWY U | TWY V | TWY W | TWY X | TWY Y | TWY Z |
|----------------|----------------|----------------|----------------|----------------|----------------|----------------|----------------|----------------|----------------|----------------|----------------|-----------------|
| Asphalt | Concrete | Concrete | Concrete | Concrete | Concrete | Concrete | Concrete | Concrete | Concrete | Concrete | Concrete | Concrete |
| PCN 64/F/A/X/T | PCN 69/R/B/W/T | PCN 85/R/B/W/T | PCN 71/F/B/X/T | PCN 71/F/B/X/T | PCN 86/F/B/X/T | PCN 72/F/B/X/T | PCN 64/F/A/X/T | PCN 95/F/B/X/T | PCN 64/F/A/X/T | PCN 86/F/B/X/T | PCN 64/F/A/X/T | PCN 43/F/C/X/T |
| | | | | | | | | | | | | PCN 82/F/C/X/T |
| | | | | | | | | | | | | PCN 7.8/F/C/X/T |

LEGEND

- Stop-bar light
- RWY Holding position
- Intermediate Holding position
- Taxiway
- Taxi routes
- Aircraft Stand
- Hot Spot with Ident

TAXIWAY EDGE LIGHTS ON ALL TAXIWAYS
TAXIWAY CENTER LINE LIGHTS ON ALL TAXIWAYS
(except : E, E2, E3, V, V1)

- HS 1 Aircraft taxiing from the ramp to RWY 07/25 do not cross the hold marking for RWY 13/31 without ATC authorization.
- HS 2 Aircraft taxiing on TWY P do not cross the hold marking for RWY 13/31 without ATC authorization.
- HS 3 Area not visible from TWR.
- HS 4 Area not visible from TWR.
- HS 5 A location on Jeju airport movement area with a history of runway incursion.



**AERODROME GROUND
MOVEMENT CHART - ICAO**

APRON ELEV 27 m
TWR 118.2, 236.6
GND 121.65

JEJU / Jeju Intl
RWY 07/25, RWY 31 ARRIVAL

ELEVATIONS AND DIMENSION IN METERS
BEARINGS ARE MAGNETIC

ANNUAL RATE OF CHANGE
2' W

33°31'00" N
VAR 7°W 2015

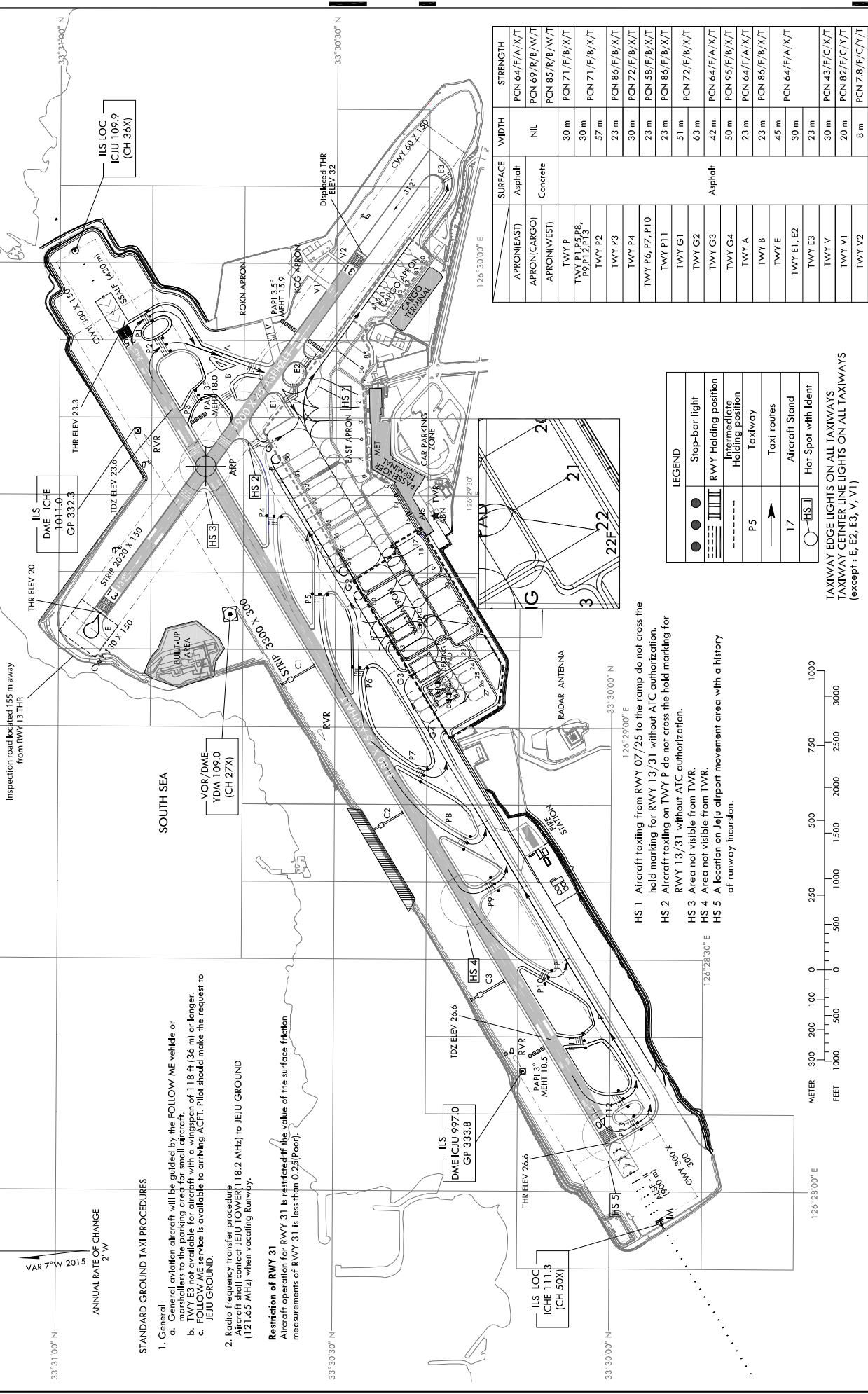
126°28'30" E
126°29'00" E
126°30'00" E

126°29'00" E
126°29'30" E
126°30'00" E

126°29'00" E
126°29'30" E
126°30'00" E

126°29'00" E
126°29'30" E
126°30'00" E

126°28'30" E
126°29'00" E
126°29'30" E



INSPECTION ROAD LOCATED 155m AWAY FROM RWY 13 THR

SOUTH SEA

THR ELEV 20
THR ELEV 23.3
THR ELEV 23.3

THR ELEV 20
THR ELEV 23.3
THR ELEV 23.3

THR ELEV 20
THR ELEV 23.3
THR ELEV 23.3

STANDARD GROUND TAXI PROCEDURES

- General
 - General aviation aircraft will be guided by the FOLLOW ME vehicle or marshaller to the parking area for small aircraft.
 - ICAO not available for aircraft with a wingspan of 118 ft (36 m) or longer.
 - FOLLOW ME service is available to arriving ACFT. Pilot should make the request to JEJU GROUND.
- Radio frequency transfer procedure

Aircraft shall contact JEJU TOWER (118.2 MHz) to JEJU GROUND (121.65 MHz) when vacating Runway.

Restriction of RWY 31
Aircraft operation for RWY 31 is restricted if the value of the surface friction measurements of RWY 31 is less than 0.25(Poor).

- HS 1 Aircraft taxiing from RWY 07/25 to the ramp do not cross the hold marking for RWY 13/31 without ATC authorization.
- HS 2 Aircraft taxiing on TWY P do not cross the hold marking for RWY 13/31 without ATC authorization.
- HS 3 Area not visible from TWR.
- HS 4 Area not visible from TWR.
- HS 5 A location on Jeju airport movement area with a history of runway incursion.

| APRON(EAST) | APRON(WEST) | TWY P | TWY P1, P5, P8, P9, P12, P13 | TWY P2 | TWY P3 | TWY P4 | TWY P6, P7, P10 | TWY P11 | TWY G1 | TWY G2 | TWY G3 | TWY G4 | TWY A | TWY B | TWY E | TWY E1, E2 | TWY E3 | TWY V | TWY V1 | TWY V2 | | | |
|----------------|----------------|----------------|------------------------------|----------------|----------------|------------------------------|-----------------|----------------|----------------|-----------------|----------------|----------------|----------------|----------------|----------------|----------------|----------------|----------------|----------------|----------------|-------|--------|--------|
| Asphalt | Concrete | Concrete | Concrete | Concrete | Concrete | Concrete | Concrete | Concrete | Asphalt | Asphalt | Asphalt | Asphalt | Asphalt | Asphalt | Asphalt | Asphalt | Asphalt | Asphalt | Asphalt | Asphalt | | | |
| PCN 64/F/A/X/T | PCN 69/B/B/W/T | PCN 69/B/B/W/T | PCN 85/B/B/W/T | PCN 71/F/B/X/T | PCN 71/F/B/X/T | PCN 86/F/B/X/T | PCN 72/F/B/X/T | PCN 58/F/B/X/T | PCN 86/F/B/X/T | PCN 72/F/B/X/T | PCN 64/F/A/X/T | PCN 95/F/B/X/T | PCN 64/F/A/X/T | PCN 86/F/B/X/T | PCN 64/F/A/X/T | PCN 64/F/A/X/T | PCN 43/F/C/X/T | PCN 82/F/C/Y/T | PCN 78/F/C/Y/T | PCN 78/F/C/Y/T | | | |
| Nil | 30 m | 30 m | 30 m | 57 m | 23 m | 30 m | 23 m | 23 m | 51 m | 63 m | 42 m | 50 m | 23 m | 23 m | 45 m | 30 m | 23 m | 30 m | 20 m | 8 m | | | |
| STRENGTH | WIDTH | SURFACE | APRON(EAST) | APRON(WEST) | TWY P | TWY P1, P5, P8, P9, P12, P13 | TWY P2 | TWY P3 | TWY P4 | TWY P6, P7, P10 | TWY P11 | TWY G1 | TWY G2 | TWY G3 | TWY G4 | TWY A | TWY B | TWY E | TWY E1, E2 | TWY E3 | TWY V | TWY V1 | TWY V2 |

LEGEND

| | |
|-----|-------------------------------|
| ● | Stop-bar light |
| ○ | RWY Holding position |
| ⊞ | Intermediate Holding position |
| --- | Taxiway |
| → | Taxi routes |
| 17 | Aircraft Stand |
| ○ | Hot Spot with Ident |

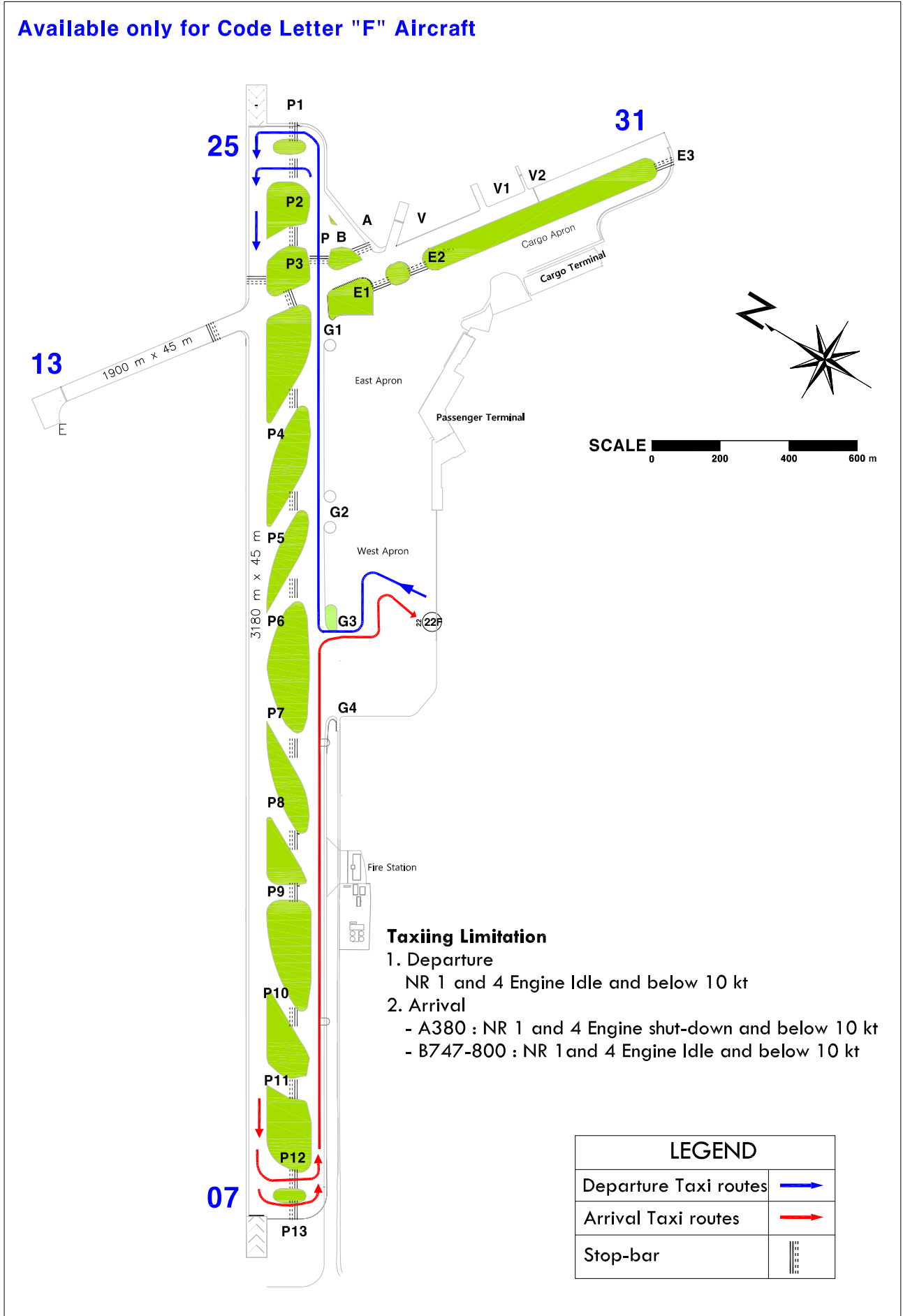


TAXIWAY EDGE LIGHTS ON ALL TAXIWAYS
TAXIWAY CENTER LINE LIGHTS ON ALL TAXIWAYS
(except : E, E2, E3, V, V1)

JEJU TWR 118.2
JEJU GND 121.65

"F" aircraft Available taxi route - RWY 25 IN USE

Available only for Code Letter "F" Aircraft



Taxiing Limitation

1. Departure
 - NR 1 and 4 Engine Idle and below 10 kt
2. Arrival
 - A380 : NR 1 and 4 Engine shut-down and below 10 kt
 - B747-800 : NR 1 and 4 Engine Idle and below 10 kt

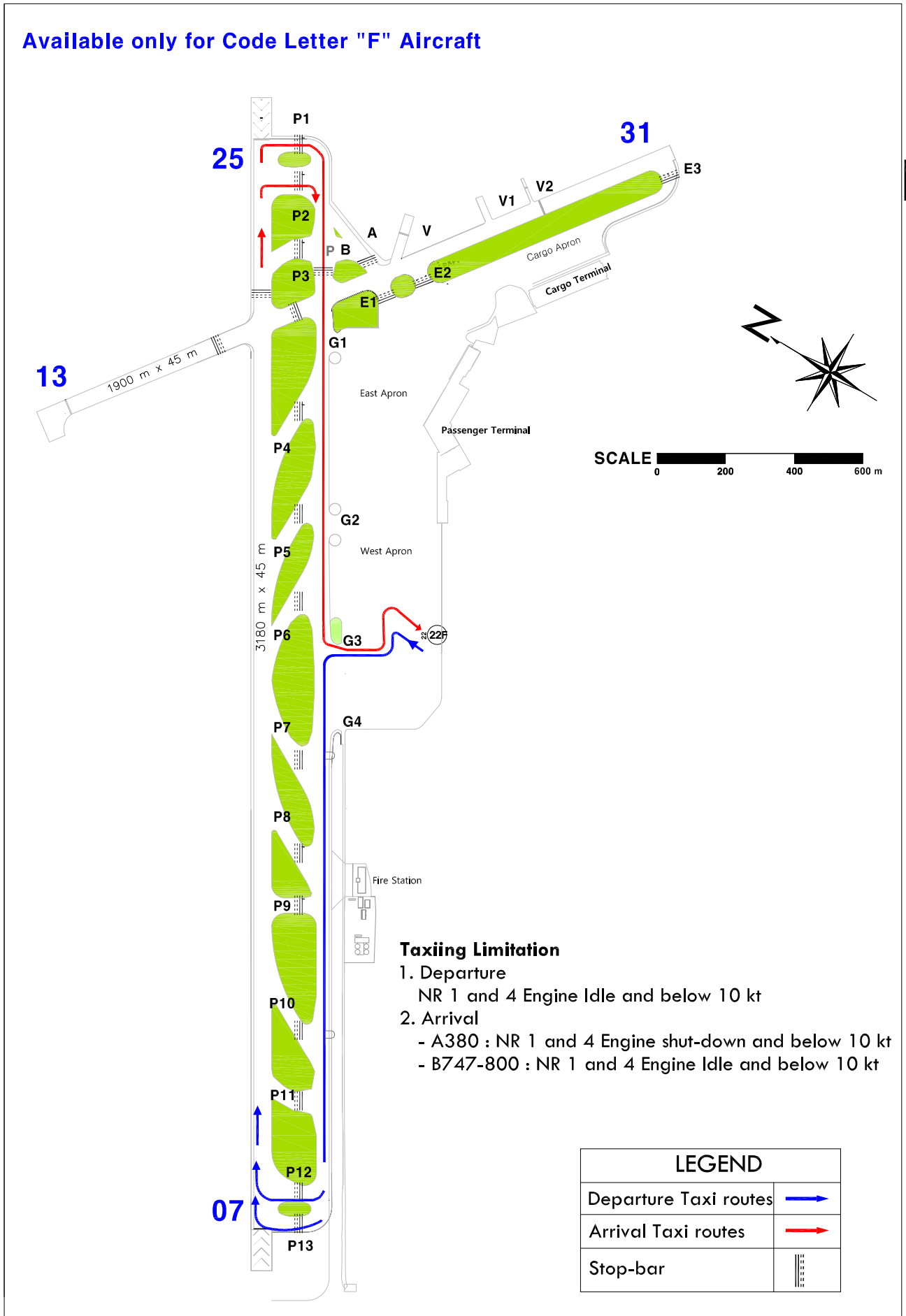
| LEGEND | |
|-----------------------|--|
| Departure Taxi routes | |
| Arrival Taxi routes | |
| Stop-bar | |

Change : Establishment of TWY V2.

JEJU TWR 118.2
JEJU GND 121.65

"F" aircraft Available taxi route - RWY 07 IN USE

Available only for Code Letter "F" Aircraft



Change : Establishment of TWY V2.