

TEL : 82-32-880-0256
FAX : 82-32-889-5905
AFS : RKRRYNYX
E-mail : aisd@molit.go.kr
Web : http://ais.casa.go.kr

REPUBLIC OF KOREA
Ministry of Land, Infrastructure and Transport
Office of Civil Aviation
11, Doum 6-ro, Sejong-si, 30103, Republic of Korea

AIP
Supplement 2/18
18 JAN 2018

GEN : NIL

ENR : Enroute

A D : NIL

TEMPORARY RESTRICTED AREAS ESTABLISHED

1. INTRODUCTION

Temporary restricted areas have been established due to unmanned aerial vehicles demonstration project carried out as follows.

2. PERIOD

From 1600 UTC 17 JAN 2018 to 1459 UTC 30 DEC 2018

3. WORKING AREAS

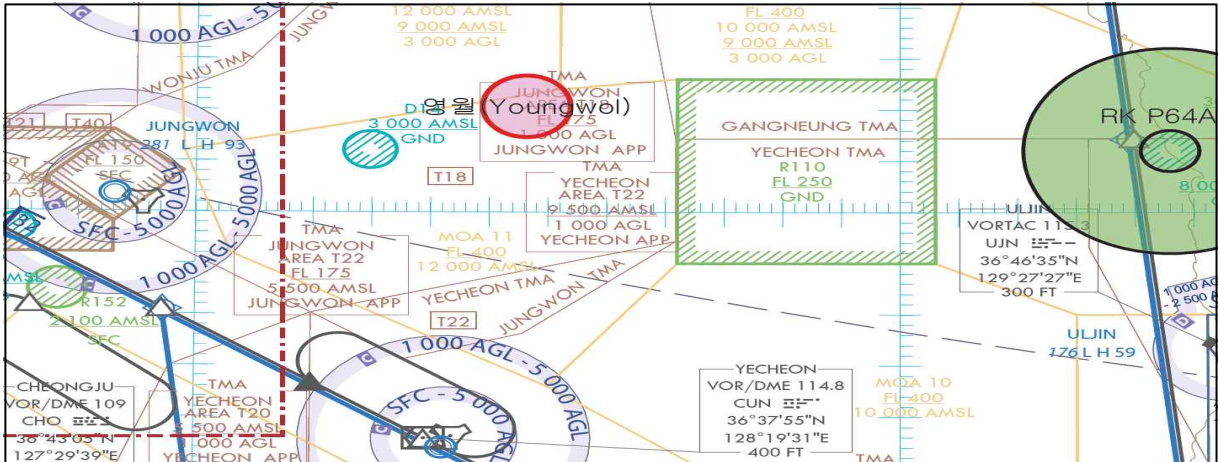
No.	Name	Lateral Limits	Vertical Limits
1	Youngweol (영월)	A circle radius 3 NM centered on 37°10'20"N 128°28'07"E	SFC ~ 1 500 ft
2	Jeonju (전주)	A circle radius 1 NM centered on 35°45'34"N 127°05'33"E	SFC ~ 1 000 ft
3	Boeun (보은)	A circle radius 3 km centered on 36°34'15"N 127°48'07"E	SFC ~ 1 000 ft

4. REMARKS

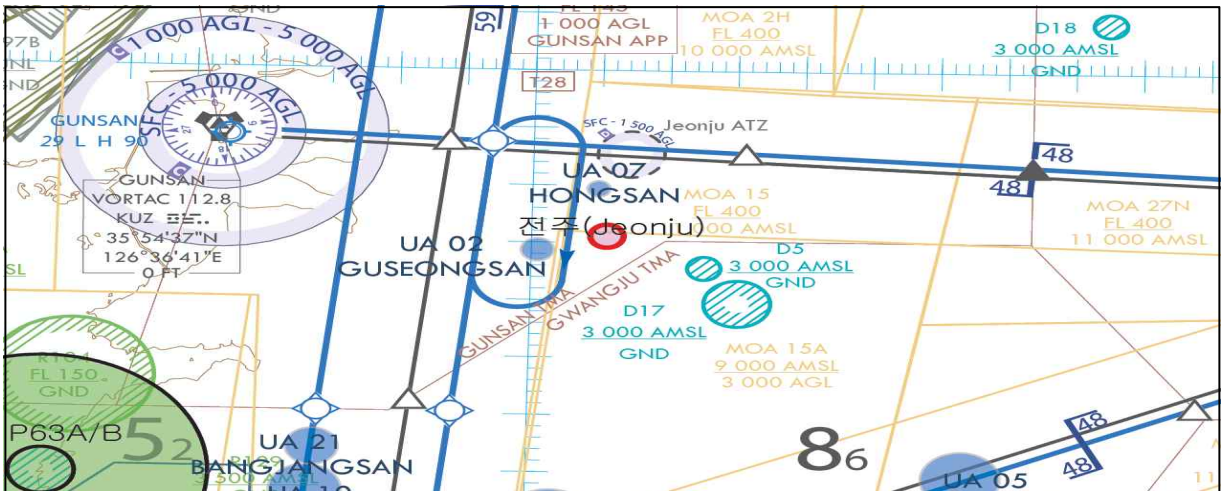
- (1) For pre-coordination and flight APV, CTC Flight Operation Division,
Seoul Regional Office of Aviation at TEL 032-740-2152, 2153
- (2) The above flight restricted areas are shown in the diagram.
- (3) Any change to the contents of these pages will be notified by NOTAM.

5. DIAGRAM

① Youngweol(영월) : 반경 3 NM, 고도 1 500 ft(원형)



② Jeonju(전주) : 반경 1 NM, 고도 1 000 ft(원형)



③ Boeun(보은) : 반경 3 km, 고도 1 000 ft(원형)

