

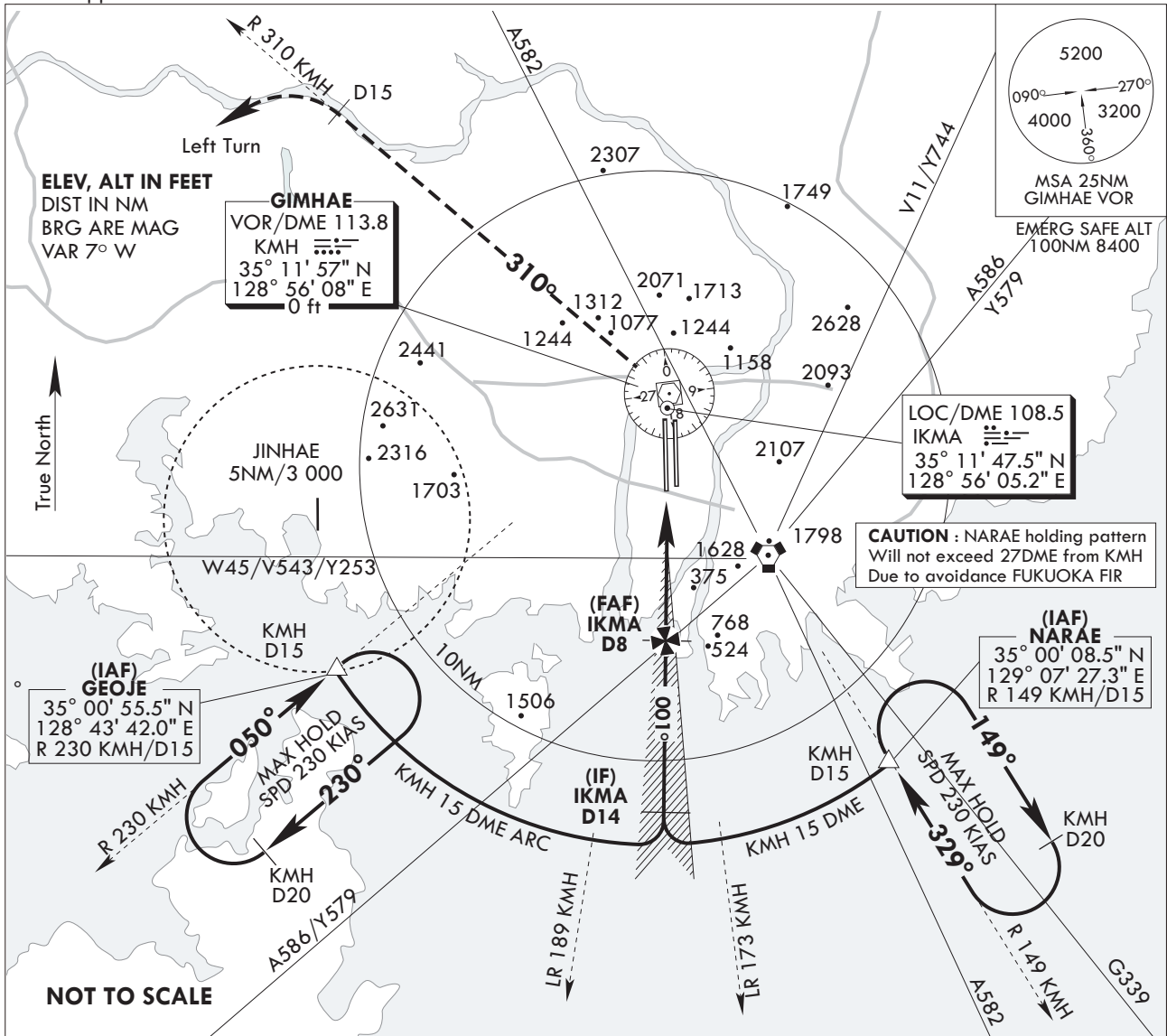
**INSTRUMENT  
APPROACH  
CHART**

**AERODROME ELEV 13 ft**  
HEIGHTS RELATED TO  
RWY 36L ELEV TDZ 13 ft

GIMHAE APP	125.5	225.1
GIMHAE TWR	118.1	118.450
	233.3	236.6

**BUSAN/Gimhae Intl(RKPK)**  
**ILS/DME**  
**RWY 36L**

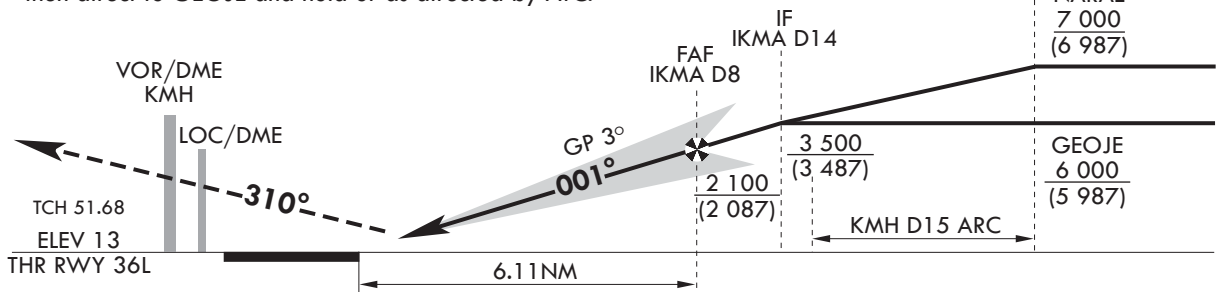
Note : Approach and circle to land under U.S. TERPS.



**MISSED APPROACH**

Climb to 6 000 ft via track on R 310 KMH to 15DME, (when RADAR inop, track ARC KMH 15DME to GEOJE) then direct to GEOJE and hold or as directed by ATC.

TRANSITION ALT 14 000  
TRANSITION LVL FL 140



CATEGORY	A	B	C	D
S-ILS/DME 36L	<b>213/18</b> 200 (200-1/2)		<b>213/24*</b> 200 (200-1/2) *Use civil only RVR 18	
	When TDZ/CL LGT inop, increase RVR to 24			
NO LGT MNM	<b>213/40</b> 200 (200-3/4)			

MISSED APPROACH minimum climb rate

KNOTS	60	120	180	240	300	TO
V/V (fpm)	320	640	960	1 280	1 600	4 300

Change : LOC/DME coordinates information.

**INTENTIONALLY**

**LEFT**

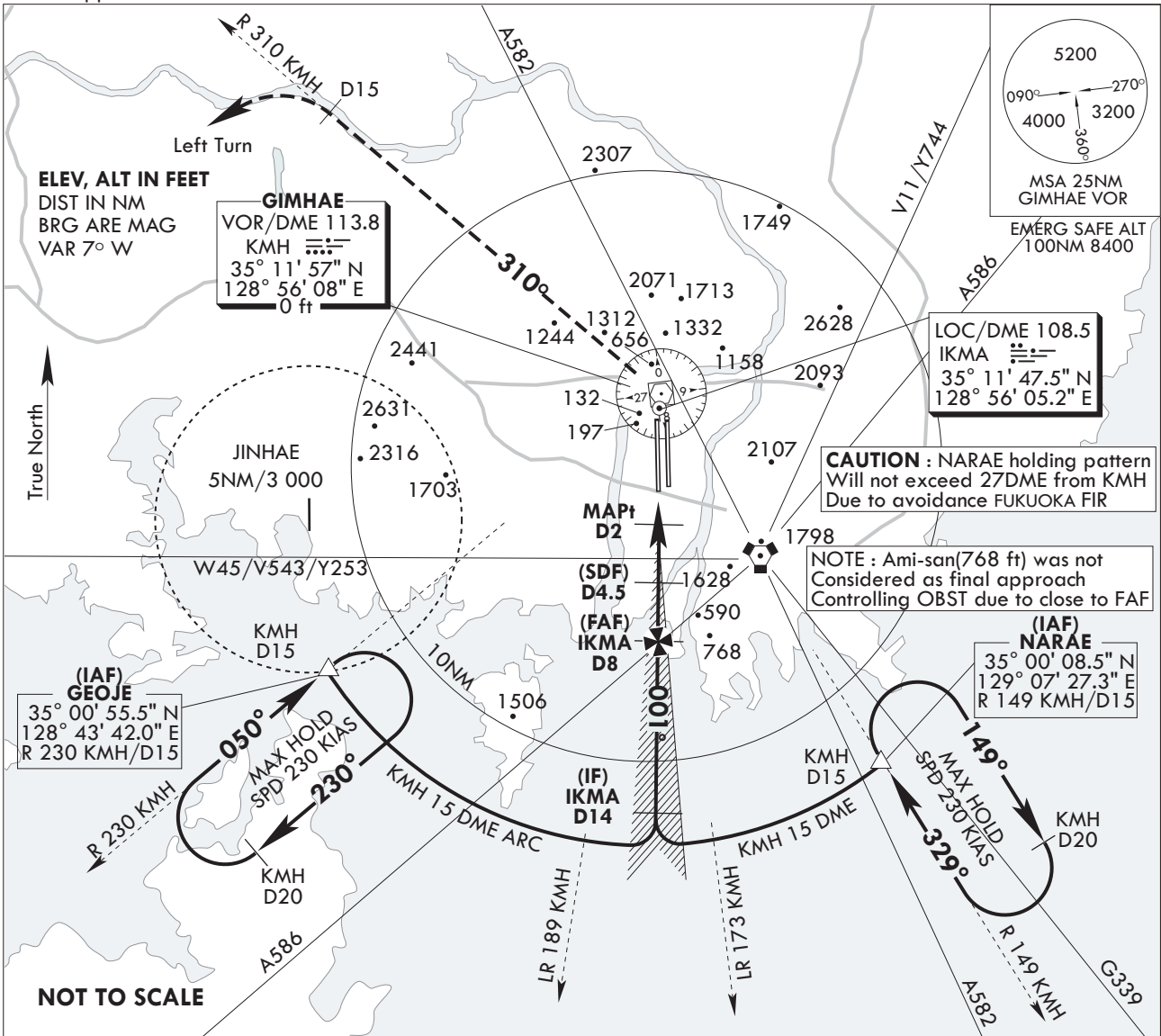
**BLANK**

**INSTRUMENT APPROACH CHART**  
**AERODROME ELEV 13 ft**  
HEIGHTS RELATED TO RWY 36L ELEV TDZ 13 ft

GIMHAE APP	125.5	225.1
GIMHAE TWR	118.1	118.450
	233.3	236.6

**BUSAN/Gimhae Intl(RKPK)**  
**LOC/DME RWY 36L**

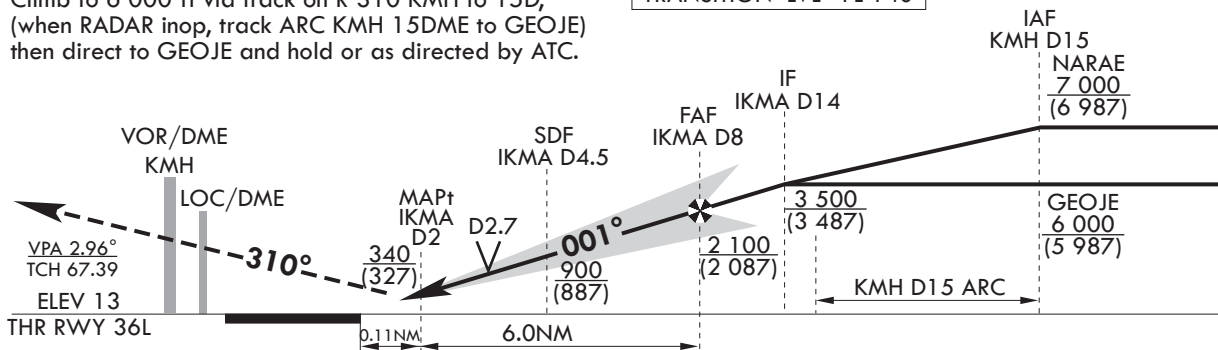
Note : Approach and circle to land under U.S. TERPS.



**MISSED APPROACH**

Climb to 6 000 ft via track on R 310 KMH to 15D, (when RADAR inop, track ARC KMH 15DME to GEOJE) then direct to GEOJE and hold or as directed by ATC.

TRANSITION ALT 14 000  
TRANSITION LVL FL 140



CATEGORY	A	B	C	D
S-LOC/DME 36L	340/24 327 (400-1/2)		340/40 327 (400-3/4)	
NO LGT MNM	340 / 50 327 (400-1)			
CIRCLING	700-1 687 (700-1)		700-2 687 (700-2)	1 040-3 1 027 (1 100-3)

MISSED APPROACH minimum climb rate

KNOTS	60	120	180	240	300	TO
V/V (fpm)	350	690	1 040	1 380	1 720	4 300

Circling not authorized East of RWY 18L/36R  
Timing not authorized defining MAPt

Change : LOC/DME coordinates information.

**INTENTIONALLY**

**LEFT**

**BLANK**

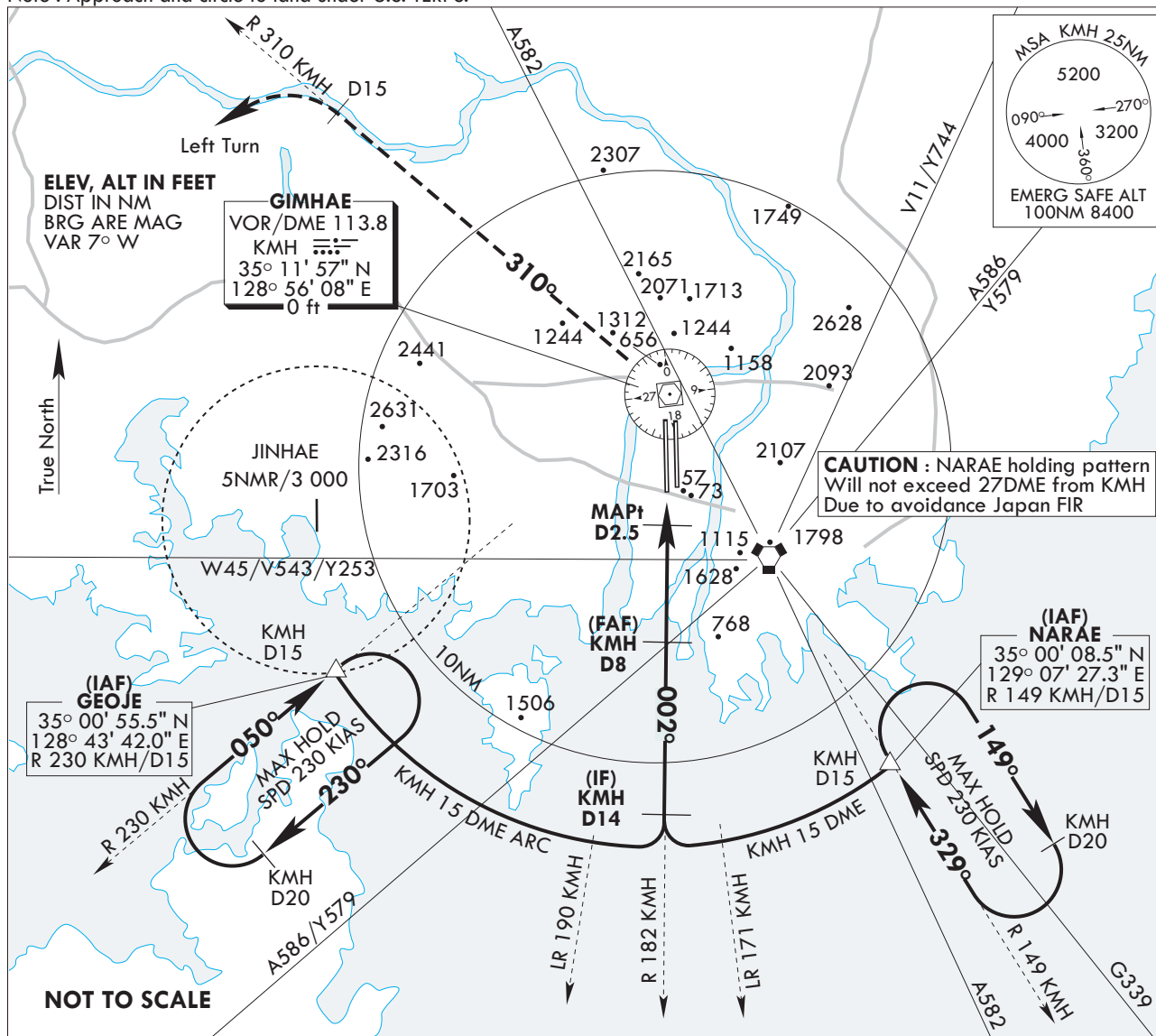
**INSTRUMENT  
APPROACH  
CHART**

**AERODROME ELEV 13 FT**  
HEIGHTS RELATED TO  
RWY 36L ELEV TDZ 13 FT

GIMHAE APP	125.5	225.1
GIMHAE TWR	118.1	118.450
	233.3	236.6

**BUSAN/Gimhae Intl(RKPK)**  
**VOR/DME**  
**RWY 36L**

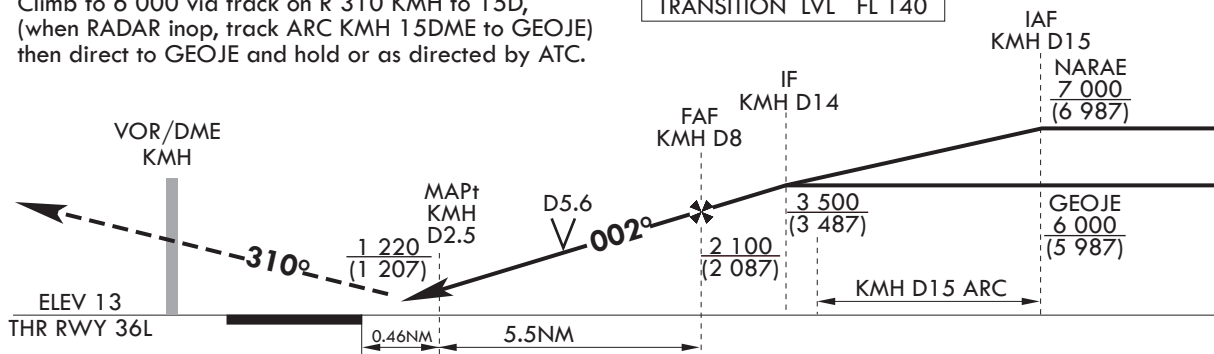
Note : Approach and circle to land under U.S. TERPS.



**MISSED APPROACH**

Climb to 6 000 via track on R 310 KMH to 15D,  
(when RADAR inop, track ARC KMH 15DME to GEOJE)  
then direct to GEOJE and hold or as directed by ATC.

TRANSITION ALT 14 000  
TRANSITION LVL FL 140



CATEGORY	A	B	C	D
S-VOR/DME 36L	1220/40 1207 (1300-3/4)	1220/50 1207 (1300-1)	1220-2 1/2 1207 (1300-2 1/2)	
NO LGT MNM	1220/60 1207 (1300-1 1/4)	1220-1 1/2 1207 (1300-1 1/2)	1220-3 1207 (1300-3)	
CIRCLING	1220-1 1/4 1207 (1300-1 1/4)	1220-1 1/2 1207 (1300-1 1/2)	1220-3 1207 (1300-3)	

MISSED APPROACH minimum climb rate

KNOTS	60	120	180	240	300	TO
V/V (fpm)	240	480	720	950	1190	4300

Circling not authorized East of RWY 18L/36R  
Timing not authorized defining MAPt.

**INTENTIONALLY**

**LEFT**

**BLANK**

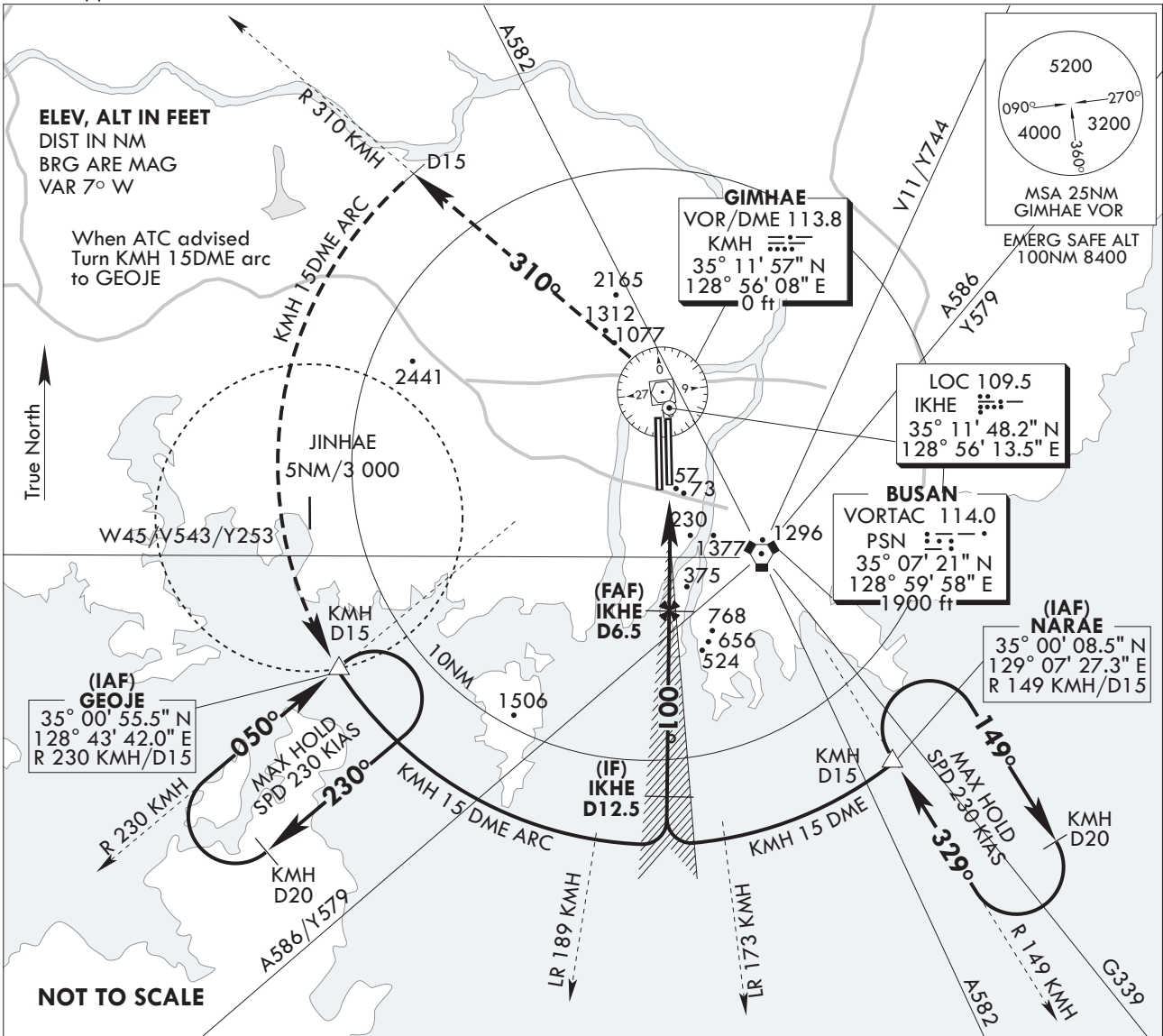
**INSTRUMENT  
APPROACH  
CHART**

**AERODROME ELEV 13 ft**  
HEIGHTS RELATED TO  
RWY 36R ELEV TDZ 8 ft

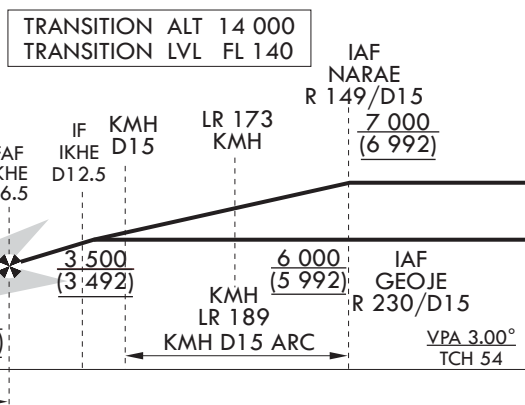
GIMHAE APP	125.5	225.1
GIMHAE TWR	118.1	118.450
	233.3	236.6

**BUSAN/Gimhae Intl(RKPK)**  
**ILS/DME**  
**RWY 36R**

Note : Approach and circle to land under U.S. TERPS.



**MISSED APPROACH**  
Climb to 6 000 ft via left turn and track on R 310 KMH to 15DME, then direct to GEOJE (when RADAR inop, track ARC KMH 15DME to GEOJE) and hold or as directed by ATC.



CATEGORY	A	B	C	D
S-ILS/DME 36R	208/18 200 (200-1/2)		208/24* 200 (200-1/2) *Use civil only RVR 18	
	When TDZ/CL LGT inop, increase RVR to 24 When ALS inop, increase RVR to 40 and VIS to 3/4			

MISSED APPROACH minimum climb rate

KNOTS	60	120	180	240	300	TO
V/V (fpm)	320	640	960	1 280	1 600	4 300

Change : LOC coordinates information.

**INTENTIONALLY**

**LEFT**

**BLANK**



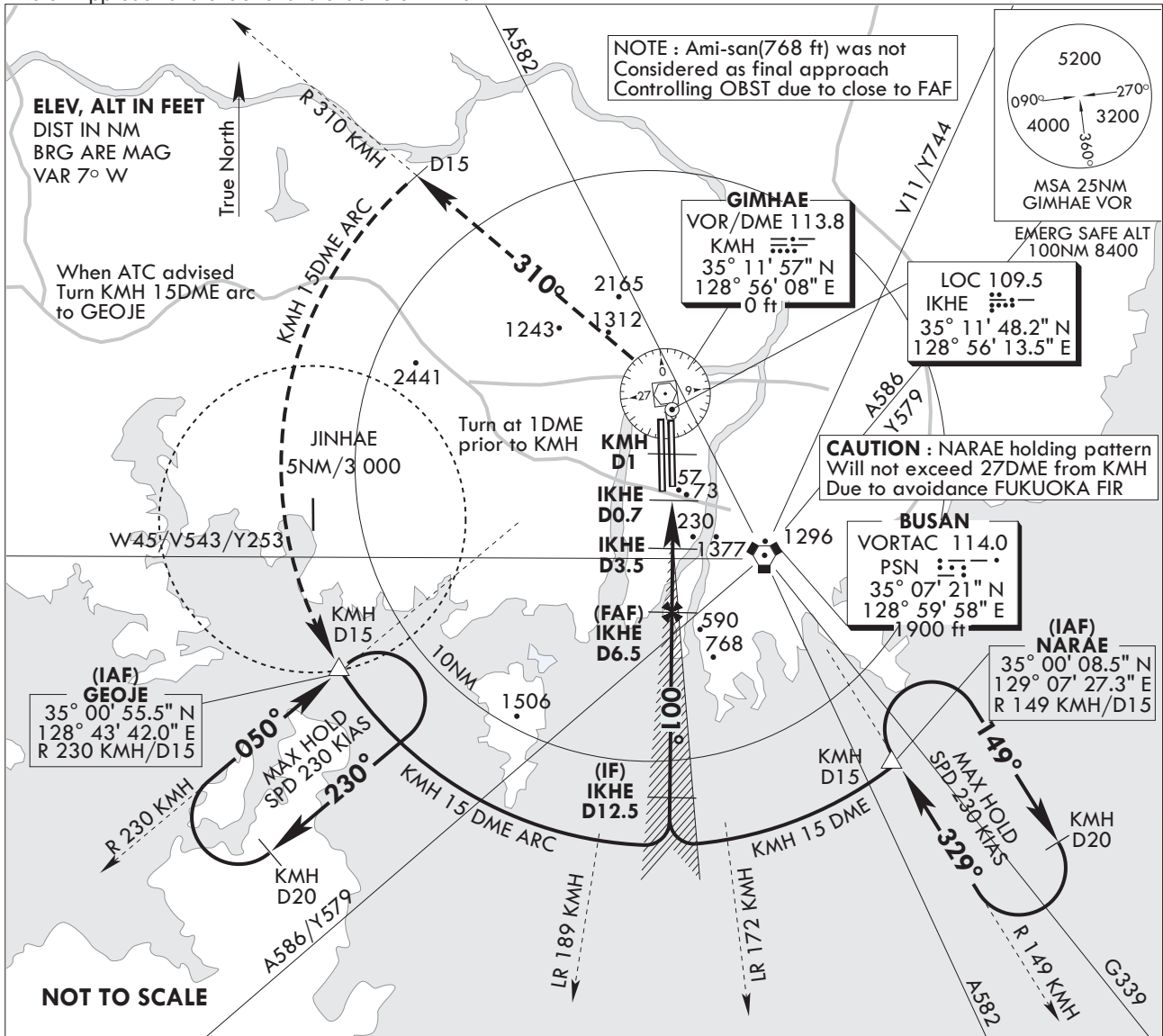
**INSTRUMENT  
APPROACH  
CHART**

**AERODROME ELEV 13 ft**  
HEIGHTS RELATED TO  
RWY 36R ELEV TDZ 8 ft

GIMHAE APP	125.5	225.1
GIMHAE TWR	118.1	118.450
	233.3	236.6

**BUSAN/Gimhae Intl(RKPK)**  
**LOC/DME**  
**RWY 36R**

Note : Approach and circle to land under U.S. TERPS.

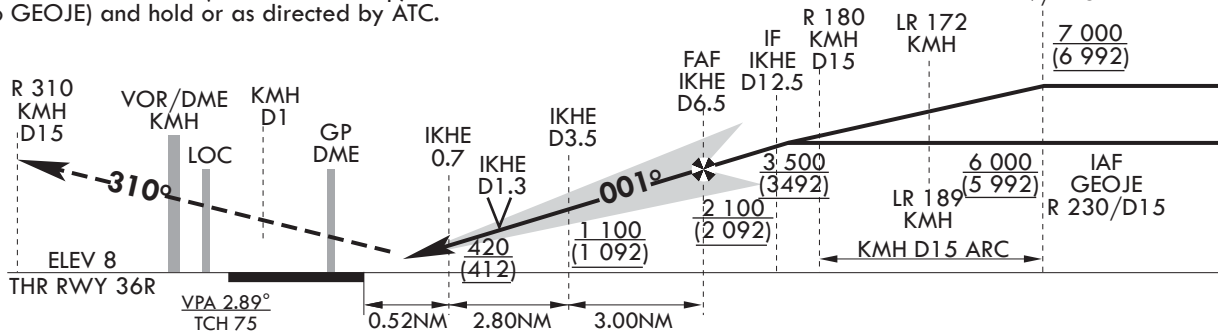


**MISSED APPROACH**

Climb to 6 000 ft via left turn and track on R 310 KMH to 15DME, then direct to GEOJE (when RADAR inop, track ARC KMH 15DME to GEOJE) and hold or as directed by ATC.

TRANSITION ALT 14 000  
TRANSITION LVL FL 140

IAF NARAE  
R 149/D15



CATEGORY	A	B	C	D
S-LOC/DME 36R	420/24	412 (500-1/2)	420/40	412 (500-3/4)
CIRCLING	700-1	687 (700-1)	700-2	1040-3 687 (700-2) 1027 (1100-3)

MISSED APPROACH minimum climb rate

KNOTS	60	120	180	240	300	TO
V/V (fpm)	250	500	750	990	1 240	4 300

Timing not authorized defining MAPt.

When ALS inop, increase CAT A, B RVR to 50 AND CAT C, D RVR to 1 1/4  
\*Circling not authorized East of RWY 36/18

Change : LOC coordinates information.

**INTENTIONALLY**

**LEFT**

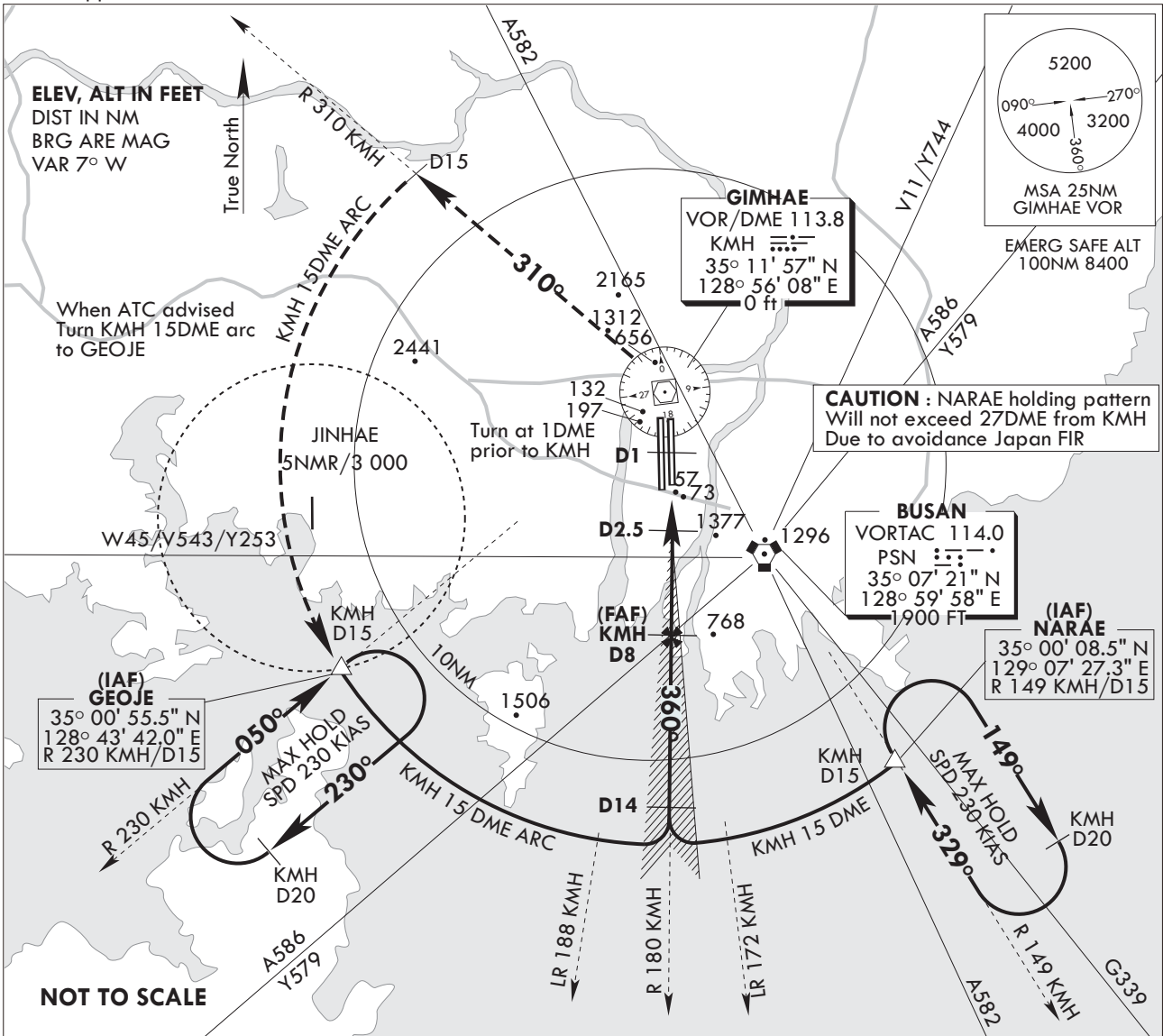
**BLANK**

**INSTRUMENT APPROACH CHART**  
**AERODROME ELEV 13 FT**  
HEIGHTS RELATED TO  
RWY 36R ELEV TDZ 8 FT

GIMHAE APP	125.5	225.1
GIMHAE TWR	118.1	118.450
	233.3	236.6

**BUSAN/Gimhae Intl(RKPK)**  
**VOR/DME**  
**RWY 36R**

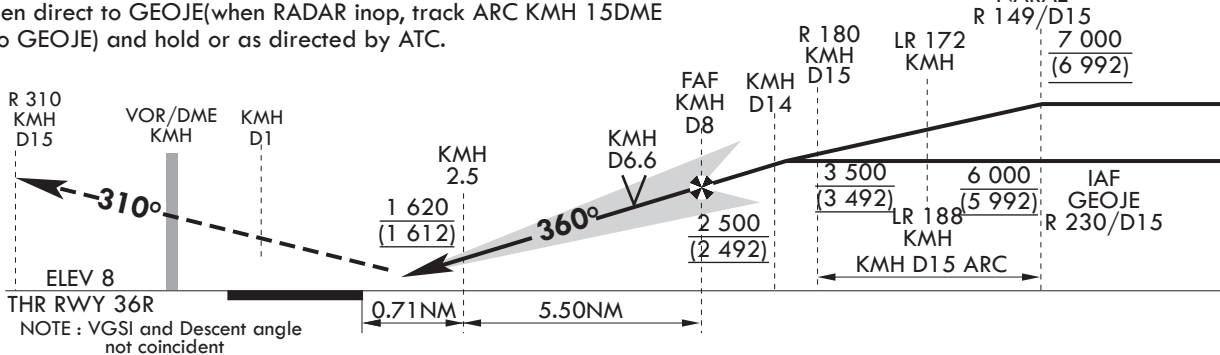
Note : Approach and circle to land under U.S. TERPS.



**MISSED APPROACH**

Climb to 6 000 via left turn and track on R 310 KMH to 15DME, then direct to GEOJE (when RADAR inop, track ARC KMH 15DME to GEOJE) and hold or as directed by ATC.

TRANSITION ALT 14 000  
TRANSITION LVL FL 140



CATEGORY	A	B	C	D
S-VOR/DME 36R	1620/60 1612 (1700-1 1/4)	1620-1 1/2 1612 (1700-1 1/2)	1620-3 1612 (1700-3)	
CIRCLING*	1620-1 1/4 1607 (1700-1 1/4)	1620-1 1/2 1607 (1700-1 1/2)	1620-3 1607 (1700-3)	

MISSED APPROACH minimum climb rate

KNOTS	60	120	180	240	300	TO
V/V (fpm)	240	480	720	960	1200	4300

Timing not authorized defining MAPT

\*Circling not authorized East of RWY 36/18

**INTENTIONALLY**

**LEFT**

**BLANK**

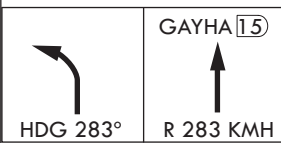
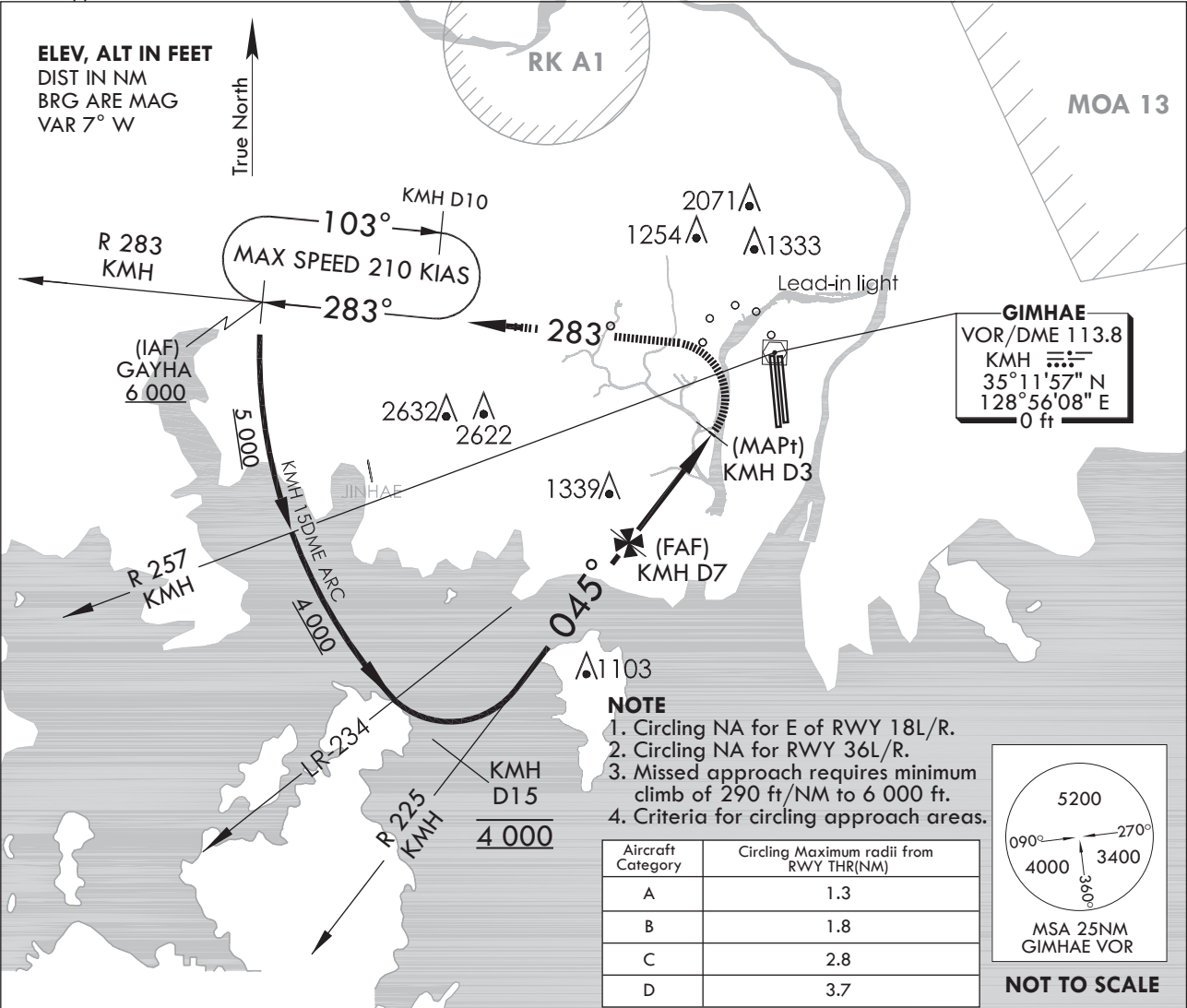
**INSTRUMENT  
APPROACH  
CHART**

**AERODROME ELEV 13 ft**  
HEIGHTS RELATED TO  
THR RWY 18L - ELEV 12 ft  
THR RWY 18R - ELEV 8 ft

GIMHAE APP	125.5	225.1
GIMHAE TWR	118.1	233.3
	118.450	236.6

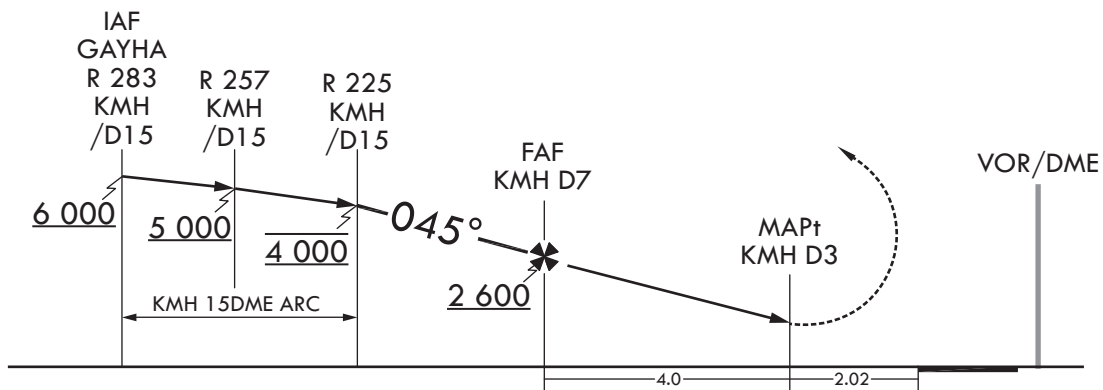
**BUSAN/Gimhae INTL(RKPK)**  
**VOR/DME - A**  
**RWY 18L/R**

Note : Approach and Circle to land under U.S TERPS.



**MISSED APPROACH**

Climb to 6 000 ft via left turn to intercept R 283 KMH then R 283 KMH to GAYHA and hold.



CATEGORY	A	B	C	D
CIRCLING	1 700 - 3		1 687(1 700 - 3)	

Change : Flight information.

**INTENTIONALLY**

**LEFT**

**BLANK**